

Historic, archived document

Do not assume content reflects current scientific knowledge, policies, or practices.



6257

LIBRARY RECEIVED
★ JUN 14 1938 ★
U. S. Department of Agriculture

Always
A BETTER GARDEN
from **WILSON'S SEEDS**

SEED 1
9
3
9 BOOK



"A door may open anywhere;
Upon a wood or path or lawn
Or crowded street or road, or there
Where none pass by from dawn to dawn;
But, if you'd have a mind at peace,
A heart that cannot harden,
Go find a door that opens wide
Upon a little garden."

—E. M. Boulton



Forty Years' Seed Experience!

WILSON'S SEEDS

284 Bloomfield Avenue -- Montclair, New Jersey

A Growing Reputation

OPPOSITE LACKAWANNA STATION

PHONE - MONTCLAIR 2-2433



The New Memorial Zinnia
WILL ROGERS

LOVELY NEW FLOWERS FOR 1939

We have selected the following outstanding flowers because of their especial merit. All are easy to grow and we do not hesitate to endorse them. Try them. We are sure they will delight you. Our seed is from the originators.

Zinnia Will Rogers. New. Dedicated to the memory of the late great humorist. An outstanding and startlingly beautiful variety, worthy to bear his name. The color is one of those vibrant and enlivening shades which calls vividly to mind the warmth of affection in which he is still held by all Americans—glaring, intense scarlet—blooms of immense size; a robust grower and a very free bloomer. Packet, 25 cts; 5 for \$1.00.

Cynoglossum Firmament. (Chinese Forget-me-not). A new dwarf type of this popular annual, growing only 12 to 15 inches tall and producing a wealth of vivid indigo blue flowers. Also fine for bees. Packet, 25 cts.

Petunia Large-Flowered Fringed Golden Jubilee. This glorious new Petunia produces immense blooms 3½ inches across. The finely fringed, crinkled petals are bright carmine, tinged scarlet with light bronze markings in the golden throat. Splendid for window boxes, terraces, large vases or tubs and for balconies. Packet, 35 cts.

Aster Improved Giants of California, Curled and Interlaced "Blue and White." The color is a deep blue, with a white stripe showing on the outer edges of each of the inner petals. The outer petals keeping to a solid deep blue. This variety is the Curled and Interlaced type of the Giants of California group. It throws large flowers five or six inches across with long, strong stems. Packet, 25 cts.

Cosmos New Double Sensation Mixed. The double form of the famous Sensation Cosmos, producing immense crimson, pink and white blooms, 4 to 5 inches across. Two forms of double flowers will be found in this outstanding introduction, the usual double crested and the newer fluted types. The immense double crested type flowers will produce a 2 inch crested center which makes them appear even larger. Packet, 25 cts.; 5 for \$1.00.

The New Hardy Russell Lupins, the outstanding flower seed introduction of 1938 and the finest development in the horticultural world in years. These new "Super" Lupins grow from 3 to 4 feet tall and bear enormous spikes in marvelous profusion. Such coloring, shading and blending of yellow, blue, pink and crimson is almost unbelievable.

Originator's packet of 12 seeds.....25 cts.
Originator's packet of 50 seeds.....65 cts.

Ageratum New Fairy Pink. A delightful soft salmon rose, dwarf compact Ageratum. It begins blooming when 2 inches high and continues to grow till it has reached its maximum height, 5 inches. Blooms all summer. Packet, 25 cts.

Marigold New Chrysanthemum Flowered. This strain is identical in form of flower with the lovely incurved Chrysanthemums. The plants are very floriferous and the stems ample for cutting. The colors vary from deep orange to lemon yellow. Flowers 100% double. Height, 3 feet. Packet, 25 cts.

Scabiosa New Orchid Shades. Exquisite beyond description. The colors run through all the tones of the Cattleya Orchid. Soft pinks from light to deep, rich mauves, crushed strawberry; royal purple, etc. Long strong stems; Sweet scented flowers. Packet, 25 cts.

THREE NEW MORNING GLORIES

Scarlett O'Hara. Early, carnelian red flowers about 3 inches across. Blooms till frost and remains open longer than others. Packet, 25 cts.

Crimson Rambler. Crimson flowers of good size; free bloomer. Packet, 25 cts.

Cornell. Large flowers of intense carnelian red with pure white borders, the colors of Cornell University. Rapid grower. Starts flowering when vine is 2 ft. tall and continues till killing frost. Packet, 25 cts.

WILSON'S SEEDS MONTCLAIR
NEW JERSEY

WILSON'S EVERGREEN LAWN MIXTURES



A beautiful lawn enhances the beauty of the entire landscape; increases property values.

WILSON'S EVERGREEN LAWN SEED

For 25 years Wilson's Evergreen Lawn Seed has been the choice of people who demand finer lawns. Based on years of extensive study and experimentation, Wilson's Evergreen is an exclusive Wilson formula. It is composed of fine, re-cleaned perennial grasses, to which have been added sufficient annual grasses to crowd out weeds, establish a quick stand of lawn, and protect the finer grasses until they are firmly established.

Remember that only fine, re-cleaned, tested seed goes into Wilson's Evergreen. Why "you get more" when you sow Wilson's Evergreen — see back cover.

NOTE: To attempt to make a lawn without adequate and proper fertilizer is futile. Wilson's 8-6-5 Fertilizer is an exclusive Wilson formula designed to supply the necessary nutrients to Wilson's Evergreen Lawn Seed mixtures. It should be used on both new and old lawns. See pages 30 and 31.

A Single Pound of Wilson's Evergreen Is Enough for 200 Square Feet

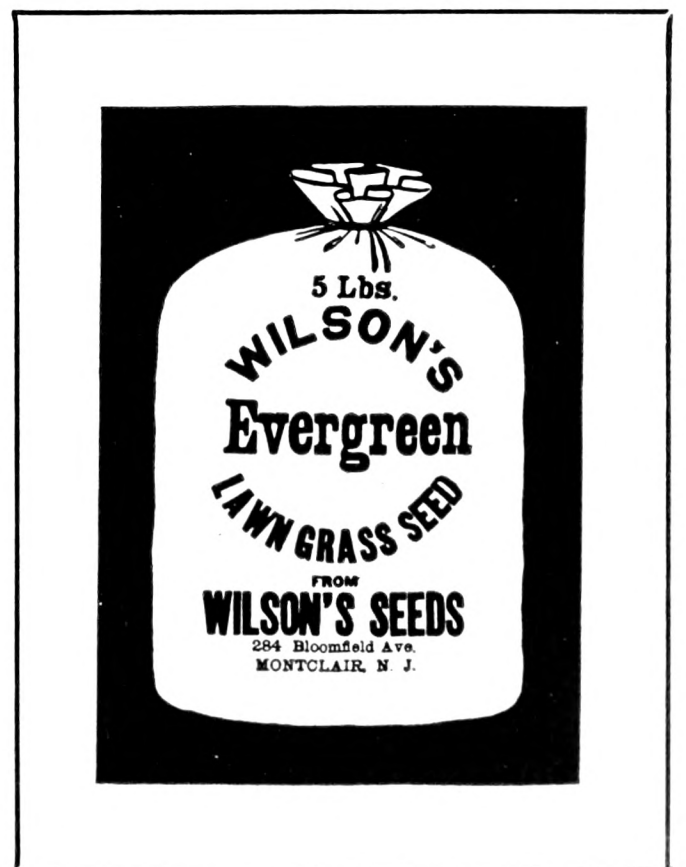
Quantity	1 lb	5 lb	10 lb	20 lb
Prices	\$.50	\$2.35	\$4.50	\$8.50

WILSON'S EVERGREEN WITH BENT

This mixture contains the same perennial grasses as Wilson's Evergreen but uses as a basis the imported and domestic bents. Bent grass is generally conceded to be the finest available. It is used on putting greens of most golf courses because it forms a rich, level, carpet-like turf that may be cut close without fear of injury to the plants. Bent lawns require generous applications of fertilizer and constant care. Such lawns, however, repay time and labor spent a hundredfold, for the rich, permanent turf a Bent mixture produces, furnishes the perfect setting for house and garden.

One pound enough for 200 square feet.

Quantity	1 lb	5 lb	10 lb	20 lb
Prices	\$.65	\$3.00	\$5.50	\$10.00



OTHER WILSON

"They're



LAWN MIXTURES

Tested"

WILSON'S SHADY-SPOT EVERGREEN

An excellent mixture for shaded or partly shaded areas, Wilson's Shady-Spot Evergreen is composed of fine, dwarf-growing grasses, which in their wild or natural state have been found to thrive in shaded areas. Ground that has been densely shaded by trees or buildings is often sour. These conditions are usually indicated by the growth of moss and coarse grasses. To correct excessive acidity, apply a liberal amount of Hydrated Lime (see page 31) after removing the moss and coarse grasses. An application of Wilson's 8-6-5 Fertilizer will replenish the soil. Sow **Wilson's Shady-Spot one pound to 100 square feet.**

Quantity	1 lb	5 lb	10 lb	20 lb
Prices	\$.65	\$3.00	\$5.50	\$10.00

WILSON'S SEASHORE EVERGREEN

Wilson's Seashore Evergreen is the ideal mixture for your shore home. Specially compounded for the many fine seaside estates served by Wilson's, this superior mixture thrives in sandy soil. Top-dress the sand with at least two inches of high grade top soil and sow seed one pound to 100 square feet.

Quantity	1 lb	5 lb	10 lb	20 lb
Prices	\$0.55	\$2.50	\$4.75	\$9.00

NEW JERSEY AGRICULTURAL STATION FORMULAS

The New Jersey Agricultural Station has recommended certain formulas for New Jersey soils. **Formula No. 1 (with Clover).** Standard for lawns in New Jersey on fair to good soils. Lb., 60 cts.; 2 lbs., \$1.10; 5 lbs., \$2.65; 10 lbs., \$5; 20 lbs., \$9.50. **Formula No. 1 (without Clover).** Same basis as above, but without Clover. Lb., 60 cts.; 2 lbs., \$1.10; 5 lbs., \$2.65; 10 lbs., \$5; 20 lbs., \$9.50.

WILSON'S TERRACE LAWN SEED

Many of the fine terraces you have admired in your neighborhood have been made from Wilson's Terrace Lawn Seed Mixture. The grasses used in this unusually fine formula produce long, spreading roots that withstand the wash of heavy rains, thrive in shallow soils and produce a green turf throughout the season. Terraces should be thickly seeded—at least 2 pounds to 100 square feet—and should be patted down with a board, not rolled.

Quantity	1 lb	5 lb	10 lb	20 lb
Prices	\$.60	\$2.75	\$5.00	\$9.50

WILSON'S SPECIAL PUTTING GREEN FORMULA

A super-fine, all-bent mixture formulated by Wilson's for the most critically discriminating golf courses and private putting green owners. It gives a stand of fine green turf quickly and thickens perceptibly each succeeding season. It may be cut close without injury to the plants. Fertilize frequently with Wilson's 8-6-5 Fertilizer. The Bent Grasses insist upon rich, nourishing soil.

Quantity	1 lb	3 lb	5 lb	10 lb	20 lb
Prices	\$1.50	\$4.00	\$6.45	\$12.50	\$24.00

A WORD ABOUT SPECIAL MIXTURES

While the formulas listed on this and the preceding page, cover all ordinary lawn needs, you may have unique soil conditions which require special attention. If so, consult us. We shall be glad to formulate special mixtures to meet your individual requirements.

GENERAL LIST OF GRASSES

(Prices Subject to Change)

(*Separate varieties*)

All Tested for Purity and Growth and All Best Grades

	1 lb	10 lb	100 lb
Blue Grass, Kentucky. One of the most valuable grasses for lawns.....	\$.35	\$ 3.25	\$30.00
Canadian Blue. For situations inclined to be sandy and dry.....	.35	3.25	30.00
Colonial Bent. Excellent for lawns	1.25	12.00	100.00
Rhode Island Bent. Most valuable for lawns	1.25	12.00	100.00
Domestic Rye Grass. Valuable for lawns in mixtures of other grasses.....	.15	1.25	11.00
Chewing's N. Z. Fescue. Valuable for lawns—does well in shade.....	1.00	9.00	85.00
Red-top Grass Seed. Fancy recleaned.....	.35	3.25	30.00
Rough-stalked Meadow. Valuable for either moist or dry soils and in shade.....	.70	6.50	60.00
Timothy. For hay. Entirely unsuitable for lawns.....	.20	1.75	16.00
White Dutch Clover. For lawns. Tends to thicken the undersod. Remains green throughout the season. Oz., 10 cts.; ¼ lb., 25 cts.....	.85	8.00	

WILSON'S QUALITY FLOWER SEEDS

Cultural Directions on Seed Packets. See Page 16 for Planting Helps.

★ INDICATES OUTSTANDING 1939 AND RECENT INTRODUCTIONS

ACHILLEA (Yarrow). HP1. **White** (Ptarmica, "The Pearl"). Grows about 2 feet high, with heads of purest white, double flowers. Pkt. 25 cts.

ACONITUM (Monkshood). HP. **Blue** (Napelus). Long spikes of curiously shaped blue flowers. Fine for shade. 3 to 5 feet. Pkt. 10 cts.



Aquilegia Long Spurred

ANCHUSA (Alkanet). HP. **Italica, Dropmore.** Blue; flowers in abundance all summer. 4 feet. Pkt. 10 cts.

ANTHEMIS Tinctoria Perry's variety. (Hardy Marguerite). HP. Deep yellow. 2 ft. Pkt. 10 cts.

ANTIRRHINUM See Snapdragon, page 13.

AQUILEGIA (Columbine). HPR. 2 feet. Hardy perennial herbaceous plant, easily grown from seed sown in the open ground early in the spring (plants will often bloom the same season) or in August or September. Blooms in May, June and July.

★ **Long Spurred Crimson Star.** Beautiful shade; quite distinct. Pkt. 25 cts.

Long Spurred Hybrids. Dobbie's Imperial. Finest of all. Perfect mixture containing many colors and shades. Pkt. 25c.

Long Spurred Hybrids (Mrs. Scott Elliott's Strain). A splendid mixture. Shades of lavender, yellow, scarlet and pink. Pkt. 15 cts.

Mixed Colors, Double. Pkt. 10 cts.; 1/8 oz. 50 cts.

Mixed Colors, Single. Pkt. 10 cts.; 1/8 oz. 25 cts.

ARABIS Alpina (Rock Cress) HPR. White. Pkt. 10 cts.

ARCTOTIS GRANDIS (Blue-eyed African Daisy). HA. The long-stemmed, daisy-like flowers are pure white, under sides lavender, and centers soft blue; silvery foliage. Blooms from July till frost; valuable for cutting. 2 ft. Pkt. 10 cts.; 1/4 oz. 60 cts.

ASPARAGUS Easily raised from seed sown in early spring in heat.

Plumosus nanus. Dwarf; largely used by florists.

Sprengeri. Fine for basketwork.

Price, either sort: Pkt. of 10 seeds, 15 cts.; 100 seeds, \$1.00.

BABY'S BREATH See Gypsophila, page 9.

BALLOON VINE (Love-in-a-Puff) HAC. Rapid grower. 8 feet. White flowers and seed pods. Pkt. 10 cts.; 1/4 oz. 25 cts.

BALSAM (Lady Slipper). HA. Double Camellia-flowered. An old favorite, of easiest culture, loving hot sun, rich soil, and plenty of water. Produces handsome bushes 1 1/2 feet high with large flowers nestling among the leaves close to the stems.

Finest Mixed. Pkt. 10 cts.; 1/4 oz. 30 cts.

BELLIS PERENNIS (Double English Daisy). HP 1R. 8 inches. The favorite perennial "Button Daisy," hardy if mulched over winter, though new plants each year from seed give best results. Flowers in autumn if sown in spring.

White, Snowball. Pkt. 10 cts.

Pink, Longfellow. Pkt. 10 cts.

Giant Red. Pkt. 10 cts.

Mixed, Finest. Pkt. 10 cts.

BLUE LACE FLOWER (*Didiscus Coeruleus*). HA. Long stemmed lavender blue flowers. Constant bloomer. Height 3 feet. Seed requires 3 to 4 weeks to germinate. Plant in partial shade. Pkt. 15 cts.; 1/8 oz. 50 cts.

BRACHYCOME Iberidifolia. (Swan River Daisy). HA. Blue. 10 ins. Pkt. 10 cts.

EXPLANATION OF SYMBOLS USED IN THIS SECTION

HA—Hardy Annual.	TB—Tender Biennial.
HHA—Half Hardy Annual.	HP1—Hardy Perennials that flower first year.
HP—Hardy Perennial.	C—Climber. Requires support.
TP—Tender Perennial.	R—Rock Plant. Suitable for rock gardens.
HB—Hardy Biennial.	

★—Outstanding 1939 and recent introductions.

AGERATUM (Floss Flower). HAR. A most satisfactory bedding plant. Rain rarely spoils the flowers, and the colors do not fade. A September sowing will give plants to bloom all winter indoors.

★ **Fairy Pink, New.** See inside front cover.

★ **Blue Ball, New.** Rich blue. Height, 5 inches. Pkt. 25 cts.

Blue Perfection. Deep blue; compact; 9 inches Pkt. 10 cts.; 1/4 oz. 35 cts.

Imperial Dwarf, Blue. 8 inches. Pkt. 10 cts.; 1/4 oz. 35 cts.

Imperial Dwarf, White. 8 inches. Pkt. 10 cts.; 1/4 oz. 35 cts.

Blue Cap. Deep blue. 4 to 5 inches. Pkt. 25 cts.; 1/8 oz. \$1.00.

Mixed Colors. Pkt. 10 cts.; 1/4 oz. 25 cts.

AGROSTEMMA Coronaria (Rose Champion). HP. 2 feet. Fine for dry places. Pkt. 10 cts.

ALYSSUM (Sweet Alyssum). HAR. Covered from early summer to fall with pure-white flowers of a delicate fragrance. One of the prettiest edging plants.

Carpet of Snow. Procumbens. Fine for rockeries. Grows only about 2 inches high. Pkt. 10 cts.; 1/4 oz. 35 cts.; 1/2 oz. 60 cts.; oz. \$1.00

Little Gem. White. Dwarf, compact; 6 ins. Pkt. 10 cts.; 1/4 oz. 35 cts.; 1/2 oz. 60 cts.; oz. \$1.

Sweet (maritimum) White, 10 ins. Pkt. 10 cts.; 1/4 oz. 25 cts.; 1/2 oz. 35 cts.; oz. 60 cts.

Lilac Queen. Pale lilac; very dainty. 10 ins. Pkt. 10 cts.; 1/4 oz. 35 cts.; 1/2 oz. 60 cts.; oz. \$1.00.

Yellow (saxatile compactum, Basket of Gold). HP1. Blooms the first season if sown early indoors; fine for rockwork; 1 foot. Pkt. 10 cts.

AMARANTHUS HA. Effective annuals, with striking foliage, growing from 2 to 4 feet high; useful in borders of tall plants or for the centers of large beds. Thrive best in sunny locations.

Molten Fire. 2 feet. Leaves dark bronze, center poinsettia-red, very beautiful. Pkt. 15 cts.; 2 for 25 cts.

Love-Lies-Bleeding (caudatus). Drooping crimson flowers. 2 feet. Pkt. 10 cts.; 1/4 oz. 20 cts.

Joseph's Coat (Tricolor). Green, Crimson and Yellow foliage. Pkt. 10 cts.; 1/4 oz. 20 cts.

This Year—Try Wilt-Resistant Asters



Calliopsis Golden Crest

ASTERS HA. 1½ - 2 feet.

- ★ **Giants of California.** Blue and white. See inside front cover.
- ★ **Super Giant Los Angeles.** A wonderful Aster, similar to the Giants of California, but earlier and larger, with an unusual curling and interlacing of the petals. Shell-pink. Long strong stems. Pkt. 15 cts.; ⅛ oz. 50 cts.
- ★ **Super Giant El Monte.** Companion to above and exactly like it except that the color is deep glowing crimson. Pkt. 15 cts.; ⅛ oz. 50 cts.
- ★ **Golden Sheaf (Aurora).** The deepest yellow Aster that is wilt resistant. The flowers are fully double with crest-like center. Pkt. 15 cts.; ⅛ oz. 50 cts.
- ★ **Imperial Red.** A giant single Aster, with curled and interlaced outer florets. Intense brilliant red with bright yellow center. Long stems. Pkt. 15 cts.; ⅛ oz. 50 cts.; ¼ oz. 85 cts.
- Imbricated or Pompon Asters.** Flowers very freely. Blooms early. The small round blossoms have an outside row of short guard petals. Mixed colors. Pkt. 10 cts.; ⅛ oz. 25 cts.
- Giant California Sunshine.** Half-double flowers, 4 to 6 inches in diameter, with the grace and beauty of the single Aster. Golden yellow center of tiny quills, contrasting with the outer petals. Blue, Lilac, Pink, White and Mixed Colors. Pkt. 10 cts.; ⅛ oz. 40 cts.
- Giant Branching.** Wilt-resistant. Strong, branching bushes 2 to 2½ feet high, bearing large flowers of full substance, averaging 5 inches across. Azure Blue, Rose, Pink, White, Mixed Colors. Pkt. 10 cts.; ⅛ oz. 40 cts.; ¼ oz. 75 cts.
- Crego's Giant Comet.** Wilt-resistant. The finest of all Comet Asters, bearing immense fluffy flowers. White, Pink, Lavender, Mixed. Pkt. 10 cts.; ⅛ oz. 40 cts.; ¼ oz. 75 cts.
- Single Asters.** Wilt-resistant. Very decorative. Large blooms, often 4 to 5 inches across. White, Rose, Dark Blue, Violet, Scarlet, Mixed Colors, Pkt. 10 cts.; ⅛ oz. 25 cts.; ¼ oz. 40 cts.
- Heart of France.** Wilt-resistant. Plants grow about 24 inches high, bearing large, rich, ruby-red flowers on long stems. 10 cts. per pkt.; ⅛ oz. 40 cts.; ¼ oz. 75 cts.

CALENDULA (Pot of Gold; Scotch Marigold) HA. Easily raised. Flower quickly from seed, and will bloom without interruption until frost. Sow where they are to grow, 2 to 3 seeds together, at intervals of 12 inches. Pull out the weakest ones, and leave but one plant to grow. 12 inches.

Orange Shaggy. The petals are long and deeply fringed or lacinated giving the blooms a shaggy appearance. Deep orange shading to lighter in center. Has long stems and forms plants about eighteen inches high. Pkt. 10 cts.

Campfire (Sensation). Very large flowers of glowing orange with a distinct red sheen. Pkt. 20 cts.; ⅛ oz. 40 cts.

Ball's Orange. Bright glowing orange uniformly double. Pkt. 15 cts.; ⅛ oz. 25 cts.; ¼ oz. 40 cts.; 1 oz. \$1.50.

Ball's Gold. Deep golden yellow. Pkt. 15 cts.; ¼ oz. 40 cts.

Lemon Queen, or Sulphur Yellow. Pkt. 10 cts.; ¼ oz. 20 cts.; ½ oz. 30 cts.; 1 oz. 50 cts.

Radio, Golden Beam. Pure golden yellow flowers, large fluffy and full centered. Petals curled and quilled. Pkt. 15 cts.; ¼ oz. 35 cts.

Sunshine (chrysantha). Chrysanthemum-flowered Golden Yellow. Pkt. 10 cts.; ¼ oz. 40 cts.

New Double Art Shades. A mixture of colors that hitherto have been unobtainable; pastel hues of cream, apricot, yellow, tangerine, etc. Suitable for both indoors and out. Pkt. 10 cts.; ⅛ oz. 25 cts.; ¼ oz. 40 cts.

CANARY BIRD VINE HAC. 15 to 20 ft. A dainty vine with beautiful cut leaves and pretty, delicate flowers of a clear canary yellow. **Does well in the shade.** Continuous bloomer. Pkt. 10 cts.; ¼ oz. 20 cts.; ½ oz. 30 cts.; 1 oz. 50 cts.

CALLIOPSIS HA. Showy annuals of clear yellows and rich red-maroons and browns. Of easiest culture, doing well in any sunny position, blooming all summer. Give plenty of room.

Crimson King. Large crimson flowers. 1 foot. Pkt. 10 cts.; ¼ oz. 40 cts.

★ **Golden Crest, New.** (C. Drummondii). 1 foot. Flowers yellow with a rich crimson circle around the eyes. Pkt. 10 cts.; ¼ oz. 40 cts.

Mixed Single, Tall. Very choice. 2 feet. Pkt. 10 cts.; ¼ oz. 25 cts.

See also Coreopsis (Perennial), page 7.

CARDINAL CLIMBER (Scarlet Queen). HAC. Fiery cardinal flowers about 1½ inches in diameter. Dark green lacinated leaves. Pkt. of 20 seeds 10 cts.



Calendula Campfire

Remember, Give Your Plants Room to Develop

★ INDICATES OUTSTANDING 1939 AND RECENT INTRODUCTIONS

CANDYTUFT HAR. Easily grown; blooms all summer. A universal favorite. Successive sowings should be made during the summer (sow in July for fall flowers) while the last sowing in the autumn will produce flowers early in spring. One foot high.

White Giant Hyacinth-flowered. Extra fine. Pkt. 10 cts.; ¼ oz. 50 cts. ½ oz. 80 cts.; 1 oz. \$1.50.

Carmine. Carmine-rose. Pkt. 10 cts.; ¼ oz. 30 cts.

Crimson. Rich shade. Pkt. 10 cts.; ¼ oz. 35 cts.

Rose Cardinal. Pkt. 10 cts.; ¼ oz. 35 cts.

Lilac. Delicate shade. Pkt. 10 cts.; ¼ oz. 25 cts.

Miniature Gem. Pure white flowers. Grows only 4 inches high. A splendid subject for rockeries and for edging. Pkt. 15 cts.

Mixed Colors. Pkt. 10 cts.; ¼ oz. 20 cts.; 1 oz. 50 cts.

PERENNIAL CANDYTUFT (IBERIS). HPR.

Lilac (Gibraltarica). Very large flowers. Pkt. 15 cts.; ½ oz. 40 cts.

White. (I. sempervirens). For rockeries, etc. Pkt. 25 cts.; ½ oz. 50 cts.

CAMPANULA Rich in color and profuse in bloom. In June and July they flower most profusely. If sown early the hardy perennials will bloom the next year.

PERENNIAL VARIETIES

Medium. (Single Canterbury Bells). The old-fashioned sort, with beautiful, large, bell-shaped blossoms.

Blue, Rose, White and Mixed Colors. Each 10 cts. per pkt.

Calycanthemum (Cup-and-Saucer; Canterbury Bells). The finest type.

Rose, Blue, White and Mixed Colors. Each 15 cts. per pkt.

★ **New Annual Canterbury Bells.** The plants grow 2 to 2½ feet tall, each producing 6 to 8 spikes of bloom. Seed sown indoors in February will produce flowering plants in July.

Angelus Bell. Beautiful deep rose.

Blue Bell. Cambridge Blue.

Liberty Bell. Intense violet blue.

Purity Bell. Pure white.

Mixed Colors.

} All
25 cts. Pkt.

CARNATION HA. Large double, highly scented flowers on long stems. With slight protection they will survive ordinary winters.

Chabaud's Giant Surpass all others in richness and variety of coloring. They flower continuously after six months from sowing. Plants thickset and bushy; stalks stiff and upright, bearing immense double sweet scented blossoms of perfect regularity.

Etincelant. Bright Scarlet.

Jeanne Dionis. Pure White.

Rose Queen. Rosy Pink.

Marie Chabaud. Fine Yellow.

Mixed. All sorts. Extra selected.

All Pkt. 25 cts.; 1 pkt. each of the 4 colors 80 cts.

Castor-Oil Bean See Ricinus, p. 12.

CELOSIA See Cockscomb, page 6 and Chinese Woolflower, this page.

CENTAUREA IMPERIALIS (Giant Imperial Sweet Sultans). HA. 2-3 feet. Wonderful for cutting—long-stemmed, fringed, and delightfully fragrant. Easy to grow, flowering freely from June until frost. Successive sowings should be made two weeks apart during May and June. Better if thinned and not transplanted.

Amaranth Red.

Deep Lavender.

White.

Lilac.

Rose.

Purple.

Mixed Colors.

Collection; 1 pkt. each of the 6 sorts for 50 cts.

} All Pkt. 10 cts.;
¼ oz. 40 cts.



Centaurea Giant Imperialis

CENTAUREA OR CORNFLOWER HA. Sow early in spring. Blooms steadily from early summer till frost if kept from seeding; even then will self seed for future seasons. One of the truest blues in the garden; grows and blooms anywhere. 2 feet.

DOUBLE CORNFLOWER

(*Centaurea cyanus*)

These popular annuals are also known as Bachelor's Buttons, Blue Bottle, Ragged Sailor, etc.

Red Boy. Dark red. Pkt. 10 cts.; ¼ oz. 35 cts.

Blue Boy. Dark blue. Pkt. 10 cts.; ¼ oz. 35 cts.

Pinkie. Rose. Pkt. 10 cts.; ¼ oz. 35 cts.

Snow Man. White. Pkt. 10 cts.; ¼ oz. 35 cts.

Mixed Colors. Pkt. 10 cts.; ¼ oz. 25 cts.; ½ oz. 50 cts.; 1 oz. 75 cts.

★ **Jubilee Gem.** A dwarf variety making a compact plant literally covered with flowers. Its foliage is distinct from all other Cornflowers, forming a tufted mass of bright green. Dark, but vivid blue, double flowers. 1 foot. Suitable for pots or border. Pkt. 15 cts.

VARIOUS CENTAUREAS

Dusty Miller. (C. Gymnocarpa). Finely cut silvery-gray foliage. Fine bedders. 1 foot. Pkt. 10 cts.

White (C. candidissima; Dusty Miller) (Cineraria). For beds, hanging baskets, pots, etc. Pkt. 15 cts.

Yellow Sweet Sultan. (C. Suaveolens). Pkt. 10 cts.

Montana. HP. Blue Perennial Cornflower. 2 feet. Pkt. 10 cts.

CHINESE FORGET-ME-NOT HA (Cynoglossum amabile). From China; of the easiest culture, forming strong plants about 18 inches high and producing through the summer sprays of intense blue flowers like Forget-Me-Nots. Pkt. 10 cts.

★ **Firmament.** See inside front cover.

CHINESE WOOLFLOWER HA. (Celosia Childsii) The flowers resemble a ball of wool. They branch freely and by mid-summer are covered with blooms. They retain their full beauty and color until frost. Fine for cutting, lasting in water almost a week. 2 feet.

Crimson. Pkt. 10 cts.

Pink. Rich shade. Pkt. 10 cts.

Yellow. Blends well with the others. Pkt. 10 cts. 1 Pkt. each of the 3 colors for 25 cts.

Mixed Colors. Pkt. 10 cts.

Be Sure to Grow Some Annual Chrysanthemums

CHRYSANTHEMUM HA Showy garden favorites, fine for cut-flowers. Summer-flowering border plants, quite distinct from the hardy autumn-flowering sorts.

Eldorado. Golden yellow, dark center. Pkt. 10 cts.; ¼ oz. 30 cts.

Northern Star. White, black center. Pkt. 10 cts.; ¼ oz. 30 cts.

Morning Star. Sulphur-yellow, very pretty. Pkt. 10 cts.; ¼ oz. 30 cts.

Evening Star (C. segetum; Golden Marguerite). Pure golden yellow flowers, 3 inches across. Pkt. 10 cts.; ¼ oz. 30 cts.

Mixed Single (Tricolor). Pkt. 10 cts.; ¼ oz. 30c.

Yellow Double. Rich color. Pkt. 10 cts.

White Double. Fine. Pkt. 10 cts.

Double Mixed. Pkt. 10 cts. ¼ oz. 25 cts.

Shasta Daisy. Alaska HP. Ball's reselected. large-flowering. Pkt. 10 cts.

CLARKIA HA. Does well in sun or shade; grows 2 to 2½ feet high, with leafy racemes of double flowers. Splendid for cutting. Blooms all summer.

Double Novelty Mixture. Pkt. 10 cts.; ¼ oz. 25 cts.

CHINESE LANTERN (*Physalis Franchetti*). HP. A hardy perennial. Scarlet-red seed-pods easily dried for winter bouquets. The flowers are white followed by the large lanterns. Easily grown in any soil. Pkt. 10 cts.; ¼ oz. 40 cts.; ½ oz. 75 cts.

CLEOME HA. *Pungens* (Giant Spider Flower). A quick-growing annual with large, curious flower-heads of bright rose on stems 4 to 5 feet tall. Pkt. 10 cts. ⅛ oz. 25 cts.

COCKSCOMB (*Celosia cristata*). HA. Freebloom-ing annuals, growing best in rather light soil, not too rich but with plenty of moisture. Bloom all summer. Fine for drying for winter bouquets.

Fire King. Fiery crimson. Extra fine. Pkt. 25 cts.

Empress. Rich crimson. Pkt. 15 cts.

Dwarf Mixed. Extra. Pkt. 10 cts.

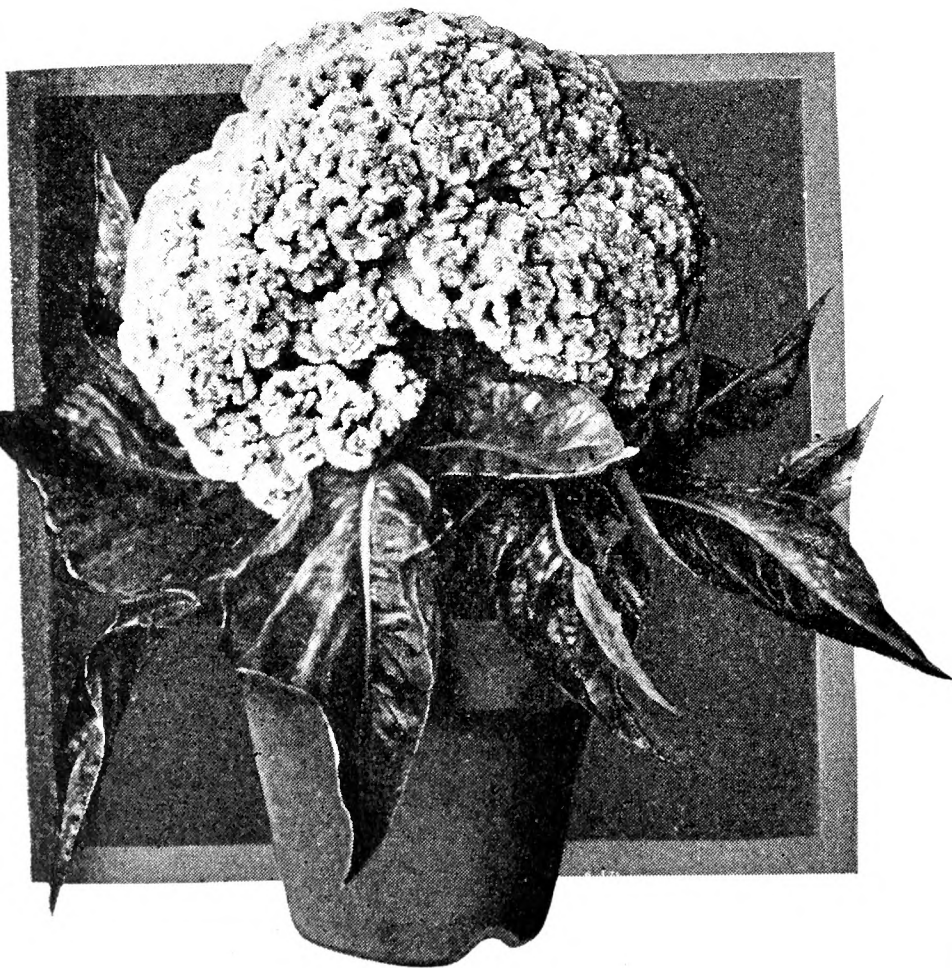
FEATHERED COCKSCOMB (*Celosia plumosa*). HA.

Make fine plants for large beds or groups; the plumes can be cut and dried for winter bouquets. **Thompsoni magnifica, Mixed.**

Pkt. 25 cts.

Pride of Castle Gould. All shades of yellow and rose to crimson. Splendid. Pkt. 25 cts.; ⅛ oz. \$1.00.

Childsii. See Chinese Woolflower, page 5.



Cockscomb Fire King



Plant of Celosia Plumosa

CLIMBING VINES FROM SEED HAC. Very useful in camouflaging fence or telegraph pole or pile of rocks. Attractive foliage, brilliant colors.

Mixed Sorts. Pkt. 10 cts.; ¼ oz. 20 cts.; 1 oz. 60 cts.

COSMOS HA. Beautiful flowers in white, pink and crimson. When about a foot high pinch tops to induce bushy growth.

EARLY SENSATION (3½ feet)

Very large flowers of pink and white with pink predominating. Stems long and graceful. Unexcelled for cutting. Early enough to bloom anywhere in the U. S.

Purity. Pure white. Pkt. 25 cts.

Pinkie. Pink. Pkt. 25 cts.

Mixed Colors. Pkt. 15 cts.

Double Mixed. See inside front cover.

WILSON'S GIANT-FLOWERED (LATE) 5 feet

Pink, White, Crimson, Mixed. All, Pkt. 5 cts.; ¼ oz. 20 cts; oz. 50 cts.

WILSON'S EXTRA-EARLY COSMOS (2½ feet)

Flower in July

Crimson, Pink, White, Mixed. All, Pkt. 5 cts.; ¼ oz. 25 cts.; oz. 75 cts.

EXTRA-EARLY DOUBLE-CRESTED COSMOS 3 ft.

The flowers are of good size, with fully double centers and an outer row or crest of broad ray-petals. The best of all Cosmos for cut-flowers. **Pink, White, Crimson, Mixed.** All Pkt. 25 cts.

Klondyke, Orange Flare (3½ feet) Distinctive and striking. The golden-orange flowers are fine for cutting. Seed germinates when ground becomes warm. Pkt. 10 cts.; ⅛ oz. 35 cts.

YOU CAN DEPEND ON THIS!

We shall again carry a complete selection of superior plants in season. Our large stock will include popular annual and perennial flowers, vegetable plants, current flower novelties and new introductions of recent years. Not only mixed colors but separate, named varieties of Asters, Calendula, Marigold, Petunia, Snapdragons, Zinnias, etc., feature our large plant stock. All of our plants are grown from our own tested seed, especially for us. Many are not obtainable elsewhere.

Dahlias are Easily Grown from Seed . . . Try Them!

★ INDICATES OUTSTANDING 1939 AND RECENT INTRODUCTIONS

CONVOLVULUS See Morning-Glory, page 10 and Ipomoea, page 9.

COREOPSIS **Mayfield Giant.** Deep golden yellow (C. grandiflora). HP1. Large flowers in abundance from June till frost. Easily grown from seed, flowering the first year if sown early. 2 feet. Pkt. 10 cts.; 1/8 oz. 20 cts.; 1/4 oz. 35 cts.; oz. \$1.

CYPRESS VINE See page 9. **Ipomoea Quamoclit.**

COBAEA SCANDENS (**Cathedral Bells**). HAC. Fine climber. **Purple.** Bell-shaped flowers. 25 feet. Sow seed **White.** Edgewise. Each Pkt. 10 cts.

DAHLIAS Grown readily from seed, flowering the first season.

Double Mixed, Extra Fine. Pkt. 25 cts.
Giant Perfection, Finest Mixed Single. Pkt. 15 cts.

★ **Unwin's Dwarf Hybrids mixed.** Miniature early-flowering semi-double hybrids 18 to 24 inches high with a wide range of colors. Ideal for cutting and easily grown from seed. Pkt. 25 cts.

★ **Queen of Moorland.** New Double Dwarf Black-leaved, finest, mixed. 18 inches. An outstanding novelty. The well shaped double flowers in various colors against the glossy black foliage produce a wonderful contrast. Seed sown indoors in January or February will produce plants that will bloom from July till frost. Pkt. 25 cts.

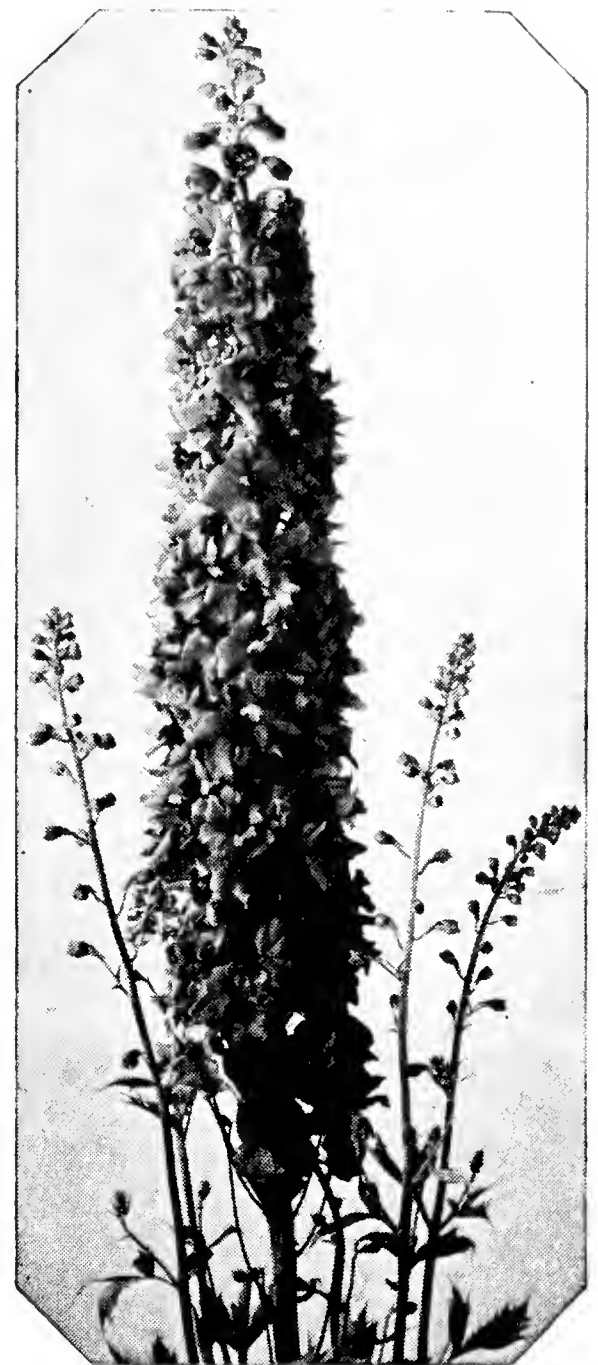
DIDISCUS COERULEUS (**Blue Lace Flower**) HA. See page 3.

DIMORPHOTHECA (**African Golden Daisy**) HAR. 1 foot. Beautiful. The flowers vary in color from white to salmon, many being zoned with several colors around the black disk. Easily grown in a sunny place.

Orange-Yellow (Aurantiaca). Fine. Pkt. 10 cts.

Mixed (Aurantiaca new hybrids). Pkt. 10 cts.; 1/8 oz. 25 cts.

DOLICHOS LABLAB (**Hyacinth. Bean**). HAC. Rapid climber; flowers in clusters. **Mixed.** 10 feet. Pkt. 10 cts.; 1/4 oz. 20 cts.; 1/2 oz. 35 cts.; 1 oz. 50 cts.



Delphinium Hollyhoek Strain

DELPHINIUM (**Perennial Larkspur**). HP1. In varieties and beauty of its blue tints the Delphinium has no equal. Some flower early and late; the season for all can be prolonged by cutting away withered flower-stems. All are easily grown. Blooms are finest in soil deeply dug and well enriched. They must have room to grow; 3 feet each way is not too much for the taller sorts. If sown in fall or very early spring nearly all will bloom the first season. For Annual Larkspur, see page 9.

Blue Butterfly (D. Chinense). Lovely salvia blue shade. Distinct. Height 18 inches. Pkt. 10 cts.

White Butterfly (D. Chinense). Fine. Pkt. 10 cts.

Pale Blue (D. Belladonna). Lovely shade. Majestic plant; 3 feet. Pkt. 25 cts.

Dark Blue (Bellamosum). Belladonna type but dark blue. 3 feet. Pkt. 25 cts.

Blue White Center (D. formosum). 3 feet. Pkt. 25 cts.

Gold Medal Hybrids Mixed. Splendid strain. Immense spikes in all the varying shades of blue. Pkt. 15 cts.; 1/8 oz. \$1.00.

Giant Hollyhoek Strain (Wrexham Type) Graceful spikes of enormous size and beauty. This mixture contains all the colors in Delphiniums including both double and single flowers. From seed sown in the hotbed in February and March one may expect glorious blooms in July, August and September. Pkt. 50 cts.; 1/16 oz. \$1.00.

Pacific Giant Hybrids. Gigantic spikes, said to be superior to the Wrexham type above. Pkt. 50 cts.

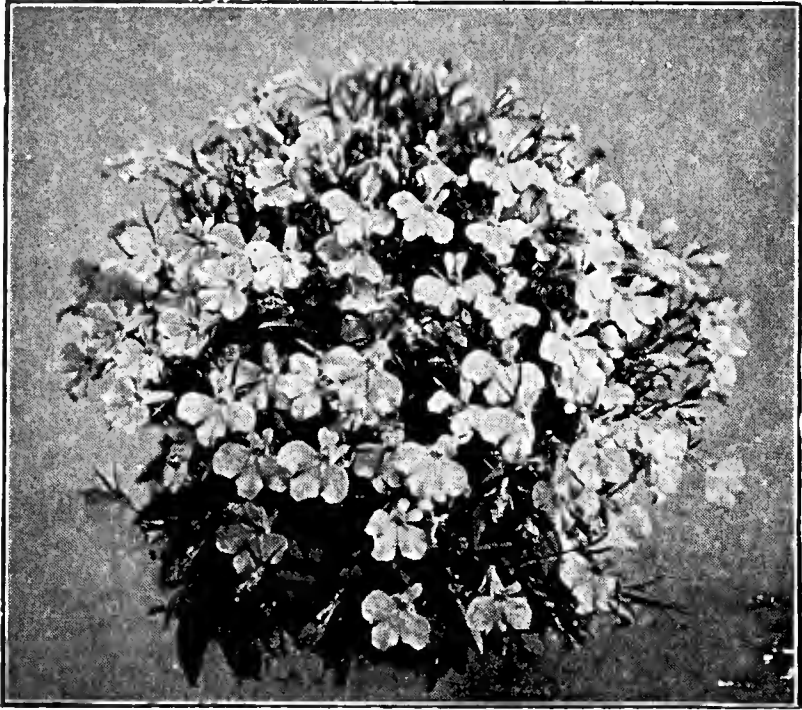


Sensation Cosmos (See Page 6)

SOWING FINE FLOWER SEEDS

One garden enthusiast mixes her fine seeds, such as Petunia, Poppy, etc., with ten times their bulk of dry sand, puts them into a salt shaker and sifts them over the beds or borders firming them with a board. A very practical idea. Try it!

Strawflowers for Winter Decorations. Easily Grown.



Lobelia. For Rockeries. (See Page 9)

ESCHOLTZIA (California Poppy; Gold Cups). HA. Attractive annuals for beds, edging or masses; bloom from June to frost. Sow seed where plants are to remain. 1 foot.

El Toreador—Double orange carmine overlaid golden bronze. Very large flowers; fluted petals. Pkt. 15 cts.; $\frac{1}{8}$ oz. 30 cts.

Robert Gardiner—Large, double orange, perfectly formed flowers with fluted petals. Pkt. 15 cts.; $\frac{1}{8}$ oz. 30 cts.

Scarlet Beauty. Deep scarlet. Pkt. 10 cts.

Orange Flame. Intense orange shading lighter toward margin of petals. Pkt. 10 cts.

Golden West (E. californica). Pkt. 10 cts.; $\frac{1}{4}$ oz. 25 cts.

Carmine King. Pkt. 10 cts.

Mixed, Large Flowering. A select large flowering erect type. Choice. Pkt. 10 cts.; $\frac{1}{4}$ oz. 35 cts.

EUPHORBIA HA. For beds or borders; flowers inconspicuous; foliage exceedingly ornamental. 2 feet.

Variegata (Snow-on-the-Mountain). Foliage margined white. Pkt. 10 cts.; $\frac{1}{4}$ oz. 25 cts.

Heterophylla, Carmine. (Fire on the Mountain). Pkt. 10 cts.; $\frac{1}{4}$ oz. 40 cts.

EVERLASTING FLOWERS (Straw Flowers). HA. Unsurpassed for winter decoration. Made into bouquets or arrayed in vases, they last for years. Should be cut and dried when in bud and blossom.

Helichrysum monstrosum, Double, Mixed. Will grow in almost any soil. 2 feet. Pkt. 10 cts.; $\frac{1}{4}$ oz. 50 cts.

Globe Amaranth (Gomphrena). Globe-shaped or clover-like flowers. Fine bedder. 2 feet. Rose, Purple, White, Mixed. All 10 cts. Pkt.; 30 cts. per $\frac{1}{4}$ oz.

Xeranthemum. HA. Mixed. Very fine. Silvery foliage and double, silky flowers. Pkt. 10 cts.

FLOWER MIXTURES HA.

Haphazard. Sow some of this broadcast in any out-of-the-way place. Pkt. 10 cts.; $\frac{1}{4}$ oz. 20 cts.; $\frac{1}{2}$ oz. 30 cts.; 1 oz. 50 cts.

Cut-Flower. Planned to produce a continuous array of bloom all summer. Sow it between vegetable rows, in odd corners and on vacant lots. Pkt. 10 cts.; $\frac{1}{4}$ oz. 25 cts.; $\frac{1}{2}$ oz. 40 cts.; 1 oz. 65 cts.

Massed Color. For producing mixed flower beds in color masses. Pkt. 10 cts.; $\frac{1}{4}$ oz. 25 cts.; $\frac{1}{2}$ oz. 40 cts.; 1 oz. 65 cts.

Fragrant Flower. An all-fragrant flower mixture of great merit. Pkt. 10 cts.; $\frac{1}{4}$ oz. 25 cts.; $\frac{1}{2}$ oz. 40 cts.; 1 oz. 65 cts.

FIRE ON THE MOUNTAIN See Euphorbia, this page.

FORGET-ME-NOT (Myosotis). Hardy if given slight protection. Seed may be sown from spring till midsummer. Alpestris sorts bloom in April; Palustris in May.

Alpestris, Blue. Fine. Pkt. 10 cts.

Alpestris, Mixed. Very choice. Pkt. 10 cts.

Palustris semperflorens. HPR. Blue. True Forget-Me-Not. 9 inches. Pkt. 25 cts.; $\frac{1}{8}$ oz. 75 cts.

FOUR O'CLOCKS (Marvel of Peru). HA. Free flowering favorite. 2 feet.
Mixed Colors. Pkt. 10 cts.; $\frac{1}{4}$ oz. 20 cts.; $\frac{1}{2}$ oz. 25 cts.; 1 oz. 40 cts.

FOXGLOVE (Digitalis). HP. Handsome, stately hardy plants, succeeding under almost all conditions, and flowering in June and July. Does well in half-shade. 3 to 5 feet.

Gloxiniaeflora, Giant Shirley, Mixed Colors. Handsome, spotted, gloxinia-like flowers on long spikes. Pkt 15 cts.; $\frac{1}{8}$ oz. 35 cts.

GAILLARDIA (Blanket Flower). HA. Large showy flowers. Bloom profusely from early summer until frost. Fine for beds, borders or for cutting. Sow where they are to bloom. 1 $\frac{1}{2}$ feet.

Picta, Single. Yellow and red. Pkt. 10 cts.; $\frac{1}{4}$ oz. 25 cts.

★ **Picta, Indian Chief**. Single blooms of exceptional richness. The petals are glittering, "bronzy" red accentuated by a dark brown center. Makes dense bushy plants about a foot high. Blooms all summer. Fine for beds or borders. Pkt. 15 cts.; 2 for 25 cts.

Double Mixed Lorenziana. Profuse-flowering; beautiful colors. Pkt. 10 cts.; $\frac{1}{4}$ oz. 25 cts.

GAILLARDIA GRANDIFLORA HP.

Thrives almost anywhere, requires little protection or care. If sown early begins flowering in July, continuing until frost; fine for cutting. 2 feet.

Burgundy. Unique shining wine red. Very effective and distinct. Pkt. 25 cts.

Neudorf Regal Hybrids. This strain of Hybrid Gaillardia has been obtained from a specialist. The flowers are as large as certain sunflowers. Pkt. 15 cts.; $\frac{1}{8}$ oz. 75 cts.

Portola Hybrids. This superb strain bears flowers of very large size, the colors ranging through shades of bronze red with golden tipped petalage. A wonderful cut-flower. Pkt. 25 cts.; $\frac{1}{8}$ oz. \$1.00

★ **Goblin**. This new variety grows only 12 to 16 inches high. Especially suitable for the rock-garden; it begins to bloom the middle of summer. The plants are of compact habit, completely covered with bright yellow flowers with a deep red zone. Its stems are long enough for cutting. Pkt. 50 cts.

Fine Mixed. Pkt. 10 cts.; $\frac{1}{8}$ oz. 30 cts.

GEUM HP. Beautiful. Bears profusely large, showy, double flowers all through the summer; an elegant flower for bouquets. 2 feet.

Mrs. Bradshaw. Brilliant crimson scarlet. Pkt. 20 cts.; $\frac{1}{16}$ oz. 40 cts.

Lady Stratheden. Double golden yellow. Pkt. 20 cts.; $\frac{1}{16}$ oz. 40 cts.



Strawflower (Helichrysum)

Gourds are Very Ornamental. Easily Grown Too

★ INDICATES OUTSTANDING 1939 AND RECENT INTRODUCTIONS

GILIA (Thimble Flower). HA. A very graceful annual, growing about 2 feet high; excellent for cutting. May be dried for winter. **Capitata Blue**. Pkt. 10 cts.; ¼ oz. 25 cts.

GLOBE AMARANTH Everlastings. See page 8.

GODETIA HA. **Mixed Colors**. A beautiful hardy annual. The plants bloom profusely and bear showy flowers of satiny texture. **Do best in rather poor soil and in somewhat shaded situations**. 1 foot. Pkt. 10 cts.

GOURDS, ORNAMENTAL HAC. Quick-growing vines; curious shapes; useful house ornaments. 12 feet.

Apple Shaped.
Pear Shaped.
Nest Egg.
Orange (Mock Orange).
Turban (Turk's Cap).
Mixed.

All, Pkt. 10 cts.; ¼ oz. 20 cts.; ½ oz. 30 cts.; oz. 50 cts.

GYPSOPHILA (Baby's Breath). Free-flowering. Of easiest culture; indispensable for cut-flowers. 2 feet.

Elegans alba grandiflora. HA. Large-flowering, pure white. Our own special strain. Very superior. Pkt. 10 cts.; ¼ oz. 25 cts.; ½ oz. 40 cts.; 1 oz. 75 cts.

Elegans rosea. Lovely rose. Pkt. 10 cts.; ¼ oz. 35 cts.; ½ oz. 60 cts. 1 oz. \$1.00.

Paniculata. HP1. White; fine; a favorite hardy perennial; 2 feet. Pkt. 10 cts.

HELICHRYSUM See Everlasting Flowers, page 8.

HELIOTROPE TP. Fine for bedding or cutting. **Finest Mixed**. Large-Flowering. 2 ft. Pkt. 10 cts.

HOLLYHOCK HP. One of the most majestic of hardy plants.

DOUBLE — CHATER'S PRIZE STRAIN

Lavender, Amaranth Purple, Pink, White, Yellow, Crimson. Each Pkt. 10 cts.; ⅓ oz. 30 cts.

Collection: One pkt. each of above 6 colors, 45 cts.

Double Mixed. Pkt. 10 cts.; ⅓ oz. 30 cts.

HUMULUS (Japanese Hop). HAC. Rapid Climber. Fine for verandas, trellis, etc. Should be better known; so easily grown. Heat, drought and insects do not trouble it. 12 feet.

Japonica. Green foliage. Pkt. 10 cts.

Japonica variegata. Green and white. Pkt. 10 cts.

HUNNEMANNIA HA. (**Santa Barbara Poppy**.) Bushy plants about 2 feet high, with striking, feathery, grayish foliage. Bloom continuously from mid-July until frost. The best of all Poppies for cutting; buttercup-yellow, cup-shaped flowers 3 inches across on 10-inch stems. Pkt. 10 cts.; ¼ oz. 25 cts.

HYACINTH BEAN See Dolichos, page 7.

IPOMOEA HAC. Climbers of rapid growth, with beautiful and varied flowers. Soak seed over night. 10 to 15 feet.

White (I. Mexicana alba grandiflora; Giant White Moonflower). Large, fragrant flowers, 5 to 6 inches in diameter; open at night and on dull days. Pkt. 10 cts.; ¼ oz. 25 cts.

★ **Heavenly Blue** (Rubra-coerulea). **Clark's early**. Flowers 3½ to 4 inches across, deep blue with white throat. They blossom profusely for a long season. Do best in sandy soil and a southern exposure. Do not fertilize. Pkt. 15 cts.; ½ oz. 35 cts.

★ **Scarlett O'Hara**. New. } See inside front cover.
★ **Cornell**. New. }

IPOMOEA QUAMOCLIT (Cypress Vine.) HAC. Fern-like foliage, star-shaped flowers. Sow in May. 10 to 15 feet. **Scarlet, White**. Each, Pkt. 10 cts.; ¼ oz. 20 cts.

KOCHIA (Summer Cypress, or Burning Bush.) HA. Pyramidal; foliage green, turning to scarlet in the summer and brown in fall; 2 feet. Pkt. 10 cts.; ¼ oz. 25 cts.

LINUM HA. **Grandiflorum Rubrum** (Crimson Flax). 2 feet. Flowers glowing crimson-rose. Beautiful in beds and borders; may be had in bloom from May to October by successive sowings. Pkt. 10 cts.

Perenne. HP. Blue. Pkt. 10 cts.; Yellow, Pkt. 10 cts.

LOBELIA HAR. For edgings, urns and baskets; requires rich soil and plenty of water. **Crystal Palace compacta**. Deep blue; fine for carpet bedding. 4 inches. Pkt. 25 cts.

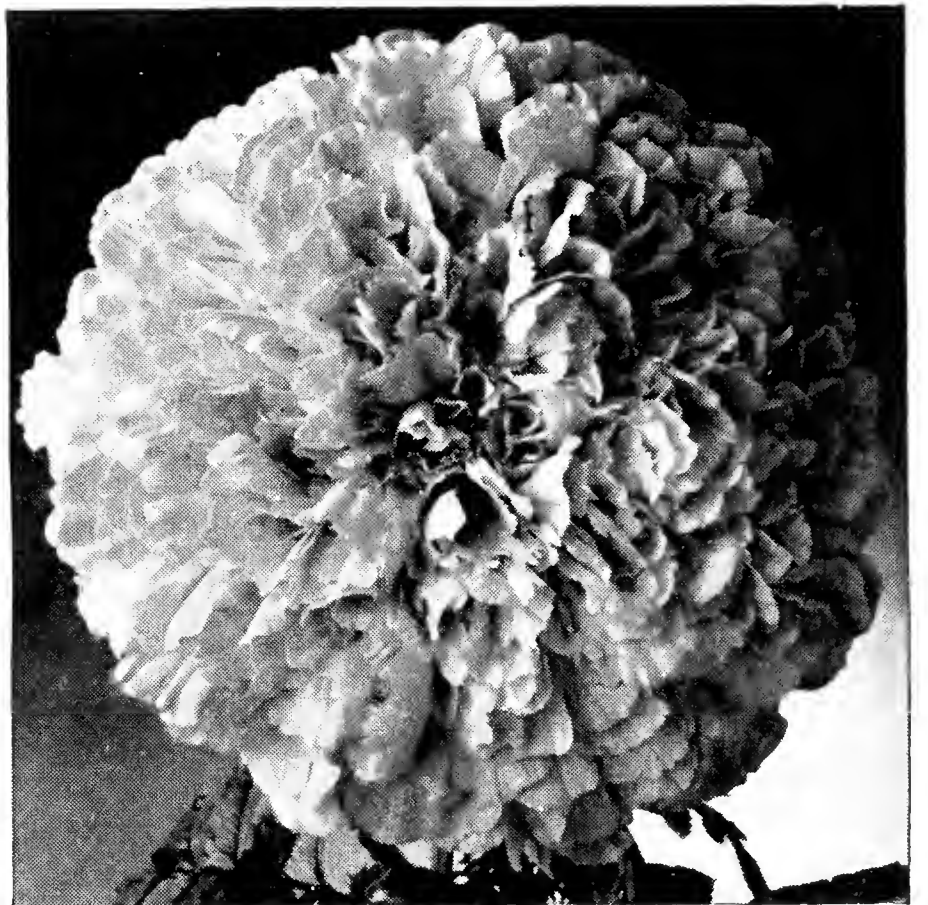
Deep Blue (L. erinus gracilis). Trailing. 1 foot. Pkt. 10 cts.

LOVE-IN-A-MIST (Nigella). HA. Free flowering annuals of easiest culture. Curious flowers and seed-pods. 1 to 2 feet.

Double Blue, Miss Jekyl. Pkt. 10 cts.

Double Mixed. Pkt. 10 cts.

LUNARIA (Honesty). HB. Silvery seed pods. Pkt. 10 cts.



Marigold Yellow Supreme (See Page 10)

LARKSPUR HA. 2 to 3 feet. (For hardy or perennial sorts see Delphinium, page 7.)

GIANT IMPERIAL — Upright Delphinium Form. Sow outdoors in early spring; transplant 1½ feet apart. Especially fine for cutting, as it produces flower stems 3 to 4 feet long, branching from the base of the plant.

Carmine King. The best deep carmine-rose. Pkt. 25 cts.; ¼ oz. 60 cts.; ½ oz. \$1.00.

Blue Spire. Intense deep Oxford blue. Pkt. 25 cts.; ¼ oz. 60 cts.; ½ oz. \$1.00.

Exquisite Rose. A beautiful shade of rose-pink, shaded salmon. Pkt. 25 cts.; ¼ oz. 60 cts.; ½ oz. \$1.00.

Gloria. Rich deep rose. Pkt. 25 cts.; ¼ oz. 60 cts.; ½ oz. \$1.00.

Miss California. Rich pink over salmon. Pkt. 25 cts.; ¼ oz. 60 cts.; ½ oz. \$1.00.

Lilac Spire. Lilac; beautiful. Pkt. 25 cts.; ¼ oz. 60 cts.; ½ oz. \$1.00.

White Spire. Double; pure white. Pkt. 25 cts.; ¼ oz. 60 cts.; ½ oz. \$1.00.

Choicest Mixed. Pkt. 15 cts.; ¼ oz. 35 cts.; ½ oz. 60 cts.

Collection. 1 Pkt. each of the above 7 sorts, \$1.25.

LAVATERA (Mallow). HA. Beautiful; bears all summer, large cup-shaped flowers. 2 feet.

Pink (L. splendens grandiflora Sunset). Pkt. 10 cts.

LINARIA HAR. Flowers resemble miniature Snapdragons.

Fairy Bouquet Mixed. Excellent for edgings and a perfect gem for the Rock Garden. Pkt. 25 cts.

The New Marigolds Are Outstanding. Try Them!



Russell Lupins

LUPINUS (Lupine). HA and HP. (Also called Ladies in Green.) Long, graceful spikes of richly colored, pea-shaped flowers; prefers a little shade. 2 feet.

ANNUAL SORTS (HARTWEGII)

Sky-Blue, Rose, White. Each, Pkt. 10 cts.; ¼ oz. 30 cts.

Giants—Mixed. All colors. Pkt. 10 cts.; ¼ oz. 30 cts.; ½ oz. 50 cts.; 1 oz. 75 cts.

★ **Russell Lupins.** (See inside front cover.)

PERENNIAL LUPINUS

Polyphyllus. Succeeds in any good soil; blooms in May and June.

Blue, White, Rose, Mixed. Each, Pkt. 10 cts.

LYCHNIS HP1. Plants of easy culture; bloom first year if sown early.

Scarlet (L. chalcidonica; Jerusalem Cross). 2 feet. Pkt. 10 cts.; ¼ oz. 25 cts.

MIGNONETTE (Reseda). HA. 1 foot. No garden is complete without this sweet-smelling annual. Sowings made from April to June keep up a succession from late summer until frost.

Paris Market. Red; enormous spike. Pkt. 15 cts.; ¼ oz. 60 cts.

Sweet-scented. Large-flowered. Pkt. 10 cts.; ¼ oz. 20 cts.; ½ oz. 30 cts.; 1 oz. 50 cts.

MATRICARIA *capensis* fl.-pl. (Feverfew), HP. 2 feet. Double, white flowers on long stems. Pkt. 10 cts.

MATTHIOLA BICORNIS HA. (Evening Scented Stock). Purplish lilac. Pkt. 10 cts.

MORNING-GLORY HAC. Of the easiest culture; can be sown in the open ground in a sunny situation when the weather has become warm.

★ **Crimson Rambler.** See inside front cover.

Mixed Giant Japanese. Pkt. 10 cts.; oz. 40 cts.

Mixed Climbing (Convolvulus major). Extra fine. Pkt. 5 cts.; ¼ oz. 15 cts.; ½ oz. 25 cts.; 1 oz. 40 cts.

See also **Ipomoea**, page 9.

MIMOSA *pubica* (Sensitive Plant). HHA. Purplish flowers. When touched the leaflets close. Pkt. 10 cts.

MOMORDICA HAC. Handsome, tendril climbers bearing odd-shaped fruit.

Balsamina (Balsam Apple). Pkt. 10 cts. ¼ oz. 25 cts.

Charantia (Balsam Pear). Pkt. 10 cts.; ¼ oz. 25 cts.

MARIGOLDS HA. Of easy culture, succeeding best in light soil and sunny exposure. See also *Calendula*, page 4.

★ **Giant African. Sunlight.** Extra double orange red flowers 5-6 inches across. Height 3 feet. Pkt. 10 cts.

★ **Giant African. Moonlight.** Same as above only flowers are light yellow. Pkt. 10 cts.

★ **Chrysanthemum-flowered Mixed.** See inside front cover.

NEW AND RECENT TALL SORTS

Carnation-Flowered Yellow Supreme. 2 feet. Large, fluffy, well-rounded blooms of delicate, honey fragrance, with broad, loose frilled petals, rich creamy lemon-yellow on long stems. Odorless foliage. Pkt. 10 cts.; ⅛ oz. 25 cts.

Guinea Gold. 2 feet. Distinct. Semi-double flowers, brilliant orange flushed with gold. Of graceful pyramidal habit. A companion to yellow Supreme. Pkt. 10 cts.; ⅛ oz. 25 cts.

★ **Sunset Giants (Gigantea)** 3½ to 4 feet. This remarkable Marigold produces flowers averaging 5 to 6 inches across. Loosely formed, full centered with broad petals overlapping and of great depth. Colors range from deep orange through the various yellows to primrose. The plant is very robust and extremely floriferous; comes sixty percent double. Pkt. 20 cts; 5 for 75 cts.

★ **Crown of Gold.** 2 feet. Distinct Crown or top part of flower surrounded by a collar of broad petals. Flowers golden orange, sweet-scented; Pkt. 15 cts.; 1/16 oz. 30 cts.; ⅛ oz. 50 cts.

DOUBLE AFRICAN TALL

Giant Lemon Queen. 2½ feet. Extra fine. This highly meritorious strain is grown by a specialist who selects only the finest blooms for seed purposes. Pkt. 10 cts.; ⅛ oz. 30 cts.

Giant Orange Prince. 2½ feet. Extra fine. The darker form of Giant Lemon Queen. Finest strain procurable. Pkt. 10 cts. ⅛ oz. 30 cts.

FRENCH TALL AND DWARF

Tall French Double Striped Royal Scot. 2 to 2½ feet. Large, well-formed double flowers in abundance. The color is a charming combination of mahogany and gold in symmetrical stripes. Pkt. 10 cts.; ⅛ oz. 40 cts.

Tall French Josephine. 2½ to 3 feet. Single dark brown with an edging of old gold and a glint of crimson. Pkt. 10 cts.; ⅛ oz. 40 cts.

Mixed Tall Double French. Fine mixture of yellow, brown and striped sorts. Good for cutting. Pkt. 10 cts.; ¼ oz. 25 cts.

Double Harmony. 1 foot. Flowers similar in form to *Scabiosa*; of good size, with a central, deep orange crest, surrounded by a maroon-brown collar of broad florets. Pkt. 10 cts.; ¼ oz. 50 cts.

Dwarf Double French. Monarch Strain. 1 foot. Mixed Colors. Very effective and long flowering. Pkt. 10 cts.; ¼ oz. 20 cts.

French Legion of Honor (Little Brownie) 1 foot. The plants bear single, golden flowers with garnet blotches. Pkt. 10 cts.; ¼ oz. 25 cts.

Double Legion of Honor. 1 foot. (Electric Light) Extra fine. Pkt. 10 cts.; ¼ oz. 35 cts.

Double Dark Brown (Robert Beist) 1 foot. Pkt. 10 cts.; ¼ oz. 35 cts.

Pigmy Marigold (*Tagetes signata pumila*). 9 inches. Forms a pretty little dwarf bush with slender foliage and single golden flowers. Pkt. 10 cts.; ¼ oz. 35 cts.

Plant Petunias For Color and Endurance

★ INDICATES OUTSTANDING 1939 AND RECENT INTRODUCTIONS

NEMESIA **Large Flowering, Mixed.** HAR. 1 ft. In summer and fall the plants are covered with blooms. Where the summers are not excessively hot, they will give a display that is difficult to excel. Pkt. 15 cts.; 1/8 oz. 50 cts.

NANA COMPACTA SUPERBISSIMA. Dwarf Mixed. The plants grow 6 to 8 inches high and bear continuously, brilliantly colored flowers; orange, yellow, crimson, rose, scarlet. Pkt. 15 cts.

NEMOPHILA **Insignis Blue** (Love Grove). HAR. 6 inches. Compact habit; blooms all summer if planted in a cool, shady place, and in not too rich soil. Pkt. 10 cts.

NICOTIANA HA. Very showy and free flowering. 3 to 4 feet.

Carmine-Red. (Sanderæ). Pkt. 10 cts.

Sanderæ Hybrids. Many colors. Pkt. 10 cts.

Pure White (Affinis). Fragrant; Pkt. 10 cts.

★ **Crimson Bedder.** affinis hybrida. Dwarf. New. Grows only 15 inches high. Produces masses of rich crimson flowers all summer. Splendid for beds, borders and rockeries. Pkt. 20 cts.

PANSIES HA. Seed sown in May will flower during late summer and autumn. For spring flowering, sow in August, and protect the young plants either in cold-frames or with straw or boughs. Do well in partial shade.

Roggli (Improved Swiss Giants). Flowers of large size with overlapping petals, many brilliant colors. Pkt. 50 cts.; 1/16 oz. \$1.00.

Wilson's Emperor, Mixed. Contains practically every combination of color and shade. Includes four- and five-blotched varieties. Pkt. 25 cts.; 1/16 oz. 50 cts.

Butterfly Mixed. A splendid mixture. Pkt. 10 cts.; 1/8 oz. 40 cts.; 1/4 oz. 75c.

PASSION FLOWER TPC. (Passiflora coerulea.) Sky-blue flowers. Fine climber. Pkt. 10 cts.

NASTURTIUMS HA

TOM THUMB DWARF (1 foot)

Wilson's Special Rainbow Mixture. Pkt. 10 cts.; 1 oz. 25 cts.; 1/4 lb. 75 cts.; 1 lb. \$2.50

NASTURTIUMS (Continued)

TALL, OR TRAILING (18 in. Tall, 5 ft. Trailing)

Wilson's Superb Mixture. All colors and shades. Pkt. 10 cts.; 1 oz. 25 cts.; 1/4 lb. 75 cts.; 1 lb. \$2.50.

DOUBLE SWEET - SCENTED NASTURTIUMS (SEMI-DWARF). Since the introduction of this splendid race of Nasturtiums, much attention has been given to improving the strain.

Golden Gleam. Pkt. 10 cts.; oz. 25 cts.; 1/4 lb. 75 cts.

★ **Fire Gleam** (Improved Scarlet Gleam). Pkt. 10 cts.; 1 oz. 40 cts.; 1/4 lb. \$1.25.

Glorious Gleam Mixture. Pkt. 10 cts.; 1 oz. 25 cts.; 1/4 lb. 75 cts.

NEW DOUBLE SWEET-SCENTED NASTURTIUMS (Dwarf or Globular Type)

Dwarf compact habit; holds its compact form even in rainy climates, and is splendid for edging, rock-gardens, or bedding.

★ **Golden Globe.** Deep golden yellow self. Pkt. 10 cts. 1 oz. 35 cts.; 1/4 lb. \$1.25.

Scarlet Globe. Brilliant shade. Pkt. 10 cts.; 1 oz. 50 cts.; 1/4 lb. \$1.50.

★ **Globe Type Mixture.** Full color-range. Pkt. 10 cts.; 1 oz. 30 cts.; 1/4 lb. \$1.00.

PETUNIA HA. One of our most popular annuals, of the easiest culture, thriving in almost any soil and blooming all summer. Fine for window boxes or winter house plants.

SINGLE DWARF SMALL-FLOWERING

12 to 18 inches

Rosy Morn. Soft carmine-pink, white throat. Pkt. 15 cts.

Rose of Heaven (Celestial). Brilliant rose-pink. Pkt. 15 cts.

Blue Bee. Deep blue; large flowers. Pkt. 15 cts.

Snowball. Pure satiny white flowers. Pkt. 10 cts.

Blue Bird. Deep violet blue. Pkt. 10 cts.

Lavender Queen. Lovely shade. Pkt. 10 cts.

★ **Topaz Rose.** Fiery velvety rose, suffused with gold. Throat the color of topaz. Pkt. 15 cts.

BALCONY OR TRAILING (15 inches) PETUNIAS

A splendid large flowering type for window boxes, vases, hanging baskets, etc. The flowers average 3 inches across.

Blue. Violet. Pkt. 25 cts.

Rose. Rose-pink; very effective. Pkt. 25 cts.

Elk's Pride. Deep violet. Splendid. Pkt. 25 cts.

White. The pure white form. Pkt. 25 cts.

One packet each of the above 4 for 75 cts.

★ **Golden Jubilee.** See inside front cover.

DWARF MINIATURE. (Flowers 2 inches in diameter). 6 inches. R. Each plant forms a perfect ball with 25 to 30 flowers in bloom at one time.

★ **Ladybird.** Bright carmine overlaid scarlet, splendid pot plant or for bedding. Pkt. 35 cts.

★ **Pink Gem.** A plant 8 inches in diameter, smothered with deep pink flowers. Indispensable for borders, window-boxes, pots, beds, and rock-gardens. Pkt. 25 cts.; 5 Pkts. for \$1.00.

★ **Rose Gem.** Rich deep rose. For borders, window boxes, rock gardens etc. Planted with Ageratum, the effect is charming. Pkt. 25 cts.; 5 Pkts. for \$1.00.

FANCY SEMI-DWARF LARGE FLOWERS

(12-15 inches)

★ **Flaming Velvet.** Gold Medal Award 1936. Color a rich deep velvety crimson. Outstanding for color, type and uniformity. Pkt. 25 cts.

★ **Martha Washington.** Forms a perfect ball covered with lovely ruffled flowers. The frilled portion is a beautiful blush pink, the center veined rich wine red deepening in the dark violet throat. Pkt. 25 cts.

PETUNIA MIXTURES

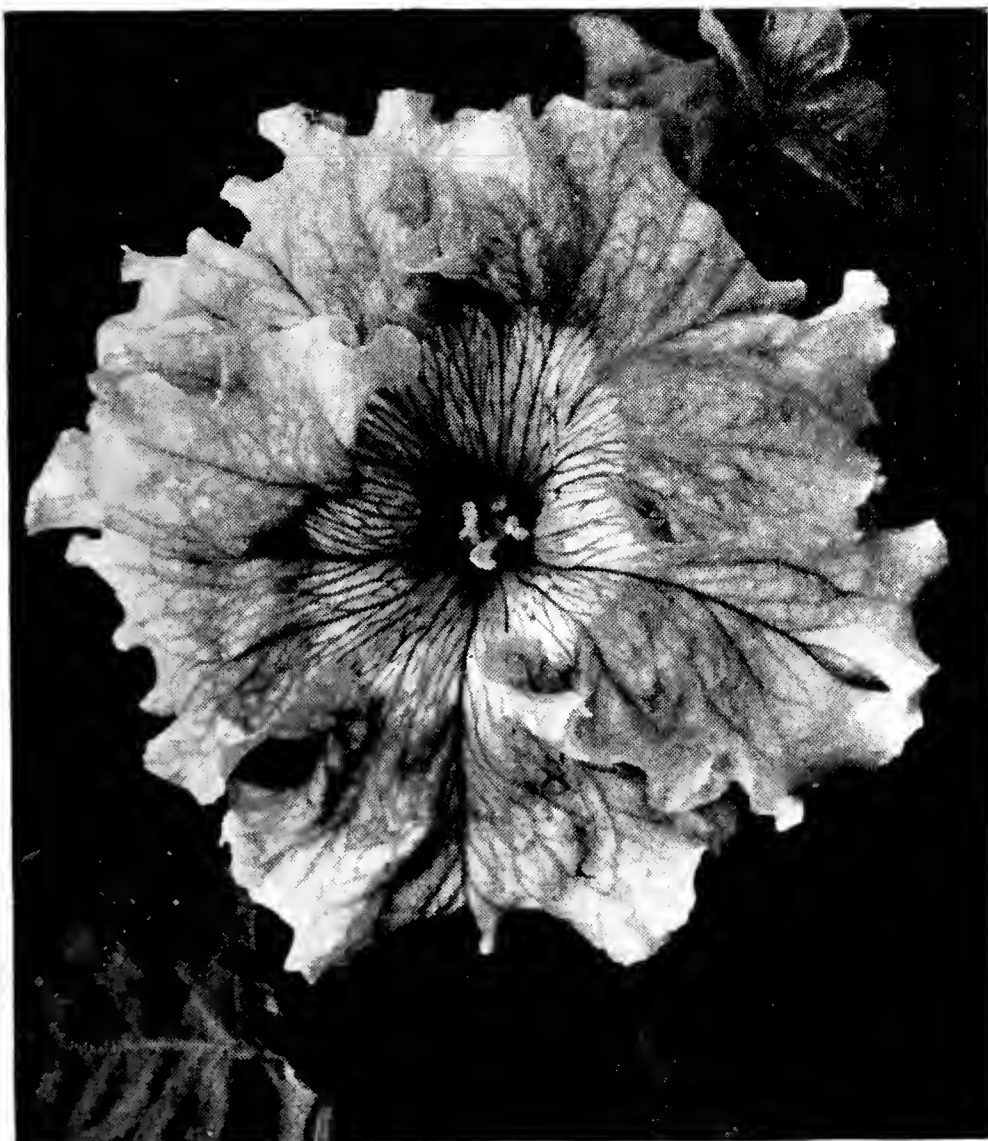
Fine Mixed Colors. Pkt. 10 cts.; 1/4 oz. 35 cts.

Balcony or Trailing Mixed. Pkt. 25 cts.

California Giants, Mixed. Tall, enormous flowers; colors unequalled. Pkt. 25 cts.

California Giants, Mixed Dwarf. Pkt. 25 cts.

Double Fringed Mixed. Extra choice strain producing 40 to 50 percent double flowers. Pkt. 50 cts.



Petunia California Giants

Portulacas Are Ideal for Rock Gardens



Phlox Drummondii

PENTSTEMON (Beard Tongue.) HP. Persistent bloomer. Easy to grow.
Fine Mixed. Large Flowering Hybrids. Pkt. 25 cts.

PHLOX DRUMMONDII HA. One of the easiest plants to grow from seed. It will thrive in any kind of soil and a sunny position, but prefers light, rich loam. Blooms all summer.

★ **Giant Annual Phlox. New Art Shades.** A new strain with flowers an inch and a quarter in diameter. A wonderful range of color. Pkt. 25 cts.

LARGE FLOWERING VARIETIES

White, Primrose, Purple, Rose, Scarlet. Each, Pkt. 10 cts.

Collection: 1 Pkt. each of above 5 colors, 40 cts.
Choice Mixed. Pkt. 10 cts.; 1/8 oz. 30 cts.

DWARF PHLOX, R.

Compact habit. Fine for pots. 6 inches.
Finest Mixed. Pkt. 10 cts.

HARDY PERENNIAL PHLOX

Wilson's Superb Large-flowered, Mixed. Pkt. 20 cts.

PINK (Dianthus). HB1, HP and HAR. One of the most beautiful and best-loved flowers. Some are hardy biennials that bloom finely the first season.

CHINENSIS, Double Mixed (China Pinks). 1 1/2 feet. Pkt. 10 cts.; 1/4 oz. 25 cts.

HEDDEWIGI (Japan Pinks). Large and brilliant; often oddly edged and striped. 1 foot.

Single Mixed. Very choice. Pkt. 10 cts.; 1/8 oz. 20 cts.

Double Mixed. Textra. Pkt. 10 cts.; 1/8 oz. 25 cts.

Wilson's Royal Pinks. Very large flowers of various colors, with crested surface to petals and white throats. Pkt. 10 cts.; 1/8 oz. 30 cts.

PLUMARIUS (Hardy Garden Pinks). HP. The fine, fragrant perennials of old-time gardens.

Pheasant's Eye. Single mixed. Pretty, fringed flowers. Pkt. 10 cts.; 1/8 oz. 20 cts.

Semperflorens. Mixed. Perpetual pinks. Pkt. 10 cts.

Double Splendid Mixed. Large-flowering Grass or Spiced Pinks. Pkt. 25 cts.

Hardy Annual Sweet Wivesfield. Choicest Mixed. R. Splendid for cut flowers. The Sweet-William-like flowers are produced in many colors. Fine for rockeries. Pkt. 15 cts.; 1/8 oz. 40 cts.

PLATYCODON (Japanese Bellflower or Balloon Flower). HPR. Sparkling deep blue flowers. Splendid for the perennial border or in a half shaded Rock Garden. Height 18 inches. Pkt. 10 cts.

POPIES Annual Poppies should be sown early and very thinly, preferably in cloudy weather or after a shower. Barely cover the seed and press down firmly. Thin to stand 3 or 4 inches apart. Make sowings at intervals for a succession. 1 1/2 feet.

SHIRLEY POPPIES, HA.

These interesting and lovely flowers, now growing in almost every garden in the world, are called Shirley poppies from the place of their origin, the garden of the late Rev. William Wilkes, for many years vicar of Shirley, England.

Single Shirley. Choicest strain of seed of this lovely flower. Pkt. 10 cts.; 1/4 oz. 25 cts.

Double Shirley (Eldorado). Beautiful new shades. Pkt. 10 cts.; 1/4 oz. 35 cts.

Begonia-flowered Double Shirley This splendid class grows 2 1/2 feet high and produces immense flowers very rich and beautiful.

DOUBLE ANNUAL POPPIES

Mixed Carnation-Flowered. Pkt. 10 cts.; 1/4 oz. 15 cts.

Mixed Paeony-Flowered. Pkt. 10 cts.; 1/4 oz. 15 cts.

HARDY PERENNIAL POPPIES

Iceland Poppies (Papaver nudicaule). HP1R. 1 foot. Mixed. Flower the first year from seed, blooming almost as quickly as the annuals. Pkt. 10 cts.

★ **Coonara Art Shades (P. Nudicaule.)** From Australia. Lovely flowers; pink, salmon and salmon-pink predominate. Pkt. 15 cts.; 4 for 50 cts.

Oriental Poppies. Sow outdoors in early spring. When fall growth starts, transplant to permanent quarters. Immense blooms. 2 feet.

Scarlet. Pkt. 10 cts.

Fiery Red. Pkt. 10 cts.

Salmon. Pkt. 10 cts.

Mixed Hybrids. Immense flowers. Pkt. 10 cts.

PORTULACA (Sun Plant; Rose Moss). HAR. Of easy culture, thriving best in light loamy soil, and in a sunny situation. Fine for beds, edgings or rockwork.

Single Mixed. Pkt. 10 cts.; 1/4 oz. 30 cts.

Double Mixed. Pkt. 15 cts.; 1/4 oz. \$1.00.

PUERARIA Thunbergiana (Kudzu Vine; Jack and the Beanstalk). HPC. Rapid climber. Rosy purple, pea-shaped, blossoms in August. Pkt. 10 cts.

PYRETHRUM (Persian Daisy). HP. Handsome herbaceous plants of easy culture.

Parthenifolium aureum (Golden Feather). Yellow foliage. Pkt. 10 cts.

roseum hybridum. Single mixed. Pkt. 15 cts.

roseum hybridum. Double mixed. Pkt. 25 cts.

QUEEN ANNE'S LACE See Blue Lace Flower, page 3.

RICINUS (Castor-Oil Bean). HA. Ornamental plants, producing subtropical effects. Fine for hedges or fences.

Zanzibariensis. Mixed. Very large leaves, some coppery bronze, changing to green. Pkt. 1/4 oz. 10 cts.; 1/2 oz. 20 cts.; 1 oz. 40 cts.

ROCK PLANTS HA and HPR. Easily raised.

Finest Mixed Perennial. Pkt. 10 cts.; 1/4 oz. 50 cts.

Finest Mixed Annual. Pkt. 10 cts.; 1/4 oz. 35 cts.

RUDBECKIA (Coneflower). HA. and HP. A free-flowering plant of compact growth forming a dense bush and blooming profusely. Fine for cutting. 2 feet.

Bicolor Superba. HA. Golden yellow flowers spotted velvety brown at the base and with brown discs. Pkt. 10 cts.

Newmanii. HP. One of the finest autumn-flowering perennials. Large flowers with orange-yellow petals and black zones. Pkt. 15 cts.

SALVIA (Flowering Sage). HA. Easily raised from seed sown in February or March in greenhouse or hotbed. Transfer seedlings to the open garden end of May.

Scarlet Bonfire. 2 feet. Pkt. 10 cts.; 1/8 oz. 40 cts.

Blue Bedder. 2 feet. A new variety of Farinacea; very compact form, of a deep blue shade and flowering very profusely from seed the first year. Pkt. 25 cts.; 1/8 oz. \$1.00.

Now . . Snapdragons are Rust-proof. Easy to Grow!

★ INDICATES OUTSTANDING 1939 AND RECENT INTRODUCTIONS

SALPIGLOSSIS (Painted Tongue). HA. 1½ feet. Beautiful, orchid-like flowers, from early summer until fall; of easy culture. Sow early in spring in a hotbed or window, and transplant outdoors after danger of frost is past.

Finest Colors Mixed, Emperor. Pkt. 10 cts.
Grandiflora mixed colors extra. Pkt. 10 cts.

SANVITALIA (Creeping Zinnia). HAR. Unexcelled for borders. A free-flowering showy annual; blooms 6 weeks after sowing. The flowers are not unlike small double Zinnias. They are deep golden yellow. Blooms continuously. Pkt. 10 cts.; ⅛ oz. 35 cts.

SCHIZANTHUS (Butterfly Flower). HA. Erect grower. Wonderful coloring; of easy culture; fine for cutting. 1½ feet.

Wisetonensis, Excelsior Mixed. All colors. Pkt. 10 cts.

SCABIOSA (Mourning Bride, or Pin-Cushion Flower). HA. Seeds of the annual sorts can be sown as soon as danger from frost is past. Growing about 2½ feet high, they come into bloom early in July and remain so till hard frosts.

ANNUAL GIANT-FLOWERING DOUBLE

★ **New Orchid Shades Mixed.** See inside front cover.

★ **Blue Cockade.** Pure deep azure blue without any suggestion of rose. The flower because of its depth is almost conical in shape. Long-stemmed, free flowering; excellent cut-flower. Pkt. 10 cts.; ⅛ oz. 25 cts.

Atropurpurea. Rich purple. Pkt. 10 cts.; ¼ oz. 30 cts.

Black Prince. Velvety black-purple. Pkt. 10 cts.; ¼ oz. 30 cts.

Azure Fairy. A clear lavender-blue. Pkt. 10 cts.; ¼ oz. 30 cts.

Crimson. Beautiful. Pkt. 10 cts.; ¼ oz. 30 cts.

Shasta. Pure white. Pkt. 10 cts.; ¼ oz. 30 cts.

Peach Blossom. Peach blossom pink. Pkt. 10 cts.; ¼ oz. 30 cts.

Mixed. All colors. Pkt. 10 cts.; ¼ oz. 35 cts.

HARDY PERENNIAL SCABIOSA

Scabiosa Caucasica (Blue Bonnet). Extremely handsome; especially good for cutting; Soft lavender-blue. Pkt. 15 cts.; ⅛ oz. 40 cts.

SCARLET RUNNER BEANS HAC. An ornamental vine, about 10 feet tall; dazzling scarlet flowers. Pkt. 10 cts.; ½ lb. 20 cts.; 1 lb. 40 cts.



Giant Snapdragon

SENSITIVE PLANT See Mimosa, page 10.

STOKESIA *cyanea* (Cornflower Aster). HP. Cornflower-like blossoms from July until frost. 2 feet.

Lavender-blue. Pkt. 10 cts.

GIANT SNAPDRAGONS *Rust-Resistant (Antirrhinum maximum)*. 2½ feet. All 15 cts. Pkt.; 1/16 oz. 40 cts.; ⅛ oz. 75 cts.

The plants of the new Rust-Resistant Snapdragons are base branching, very free flowering, each producing 8 to 18 long, graceful spikes. The flowers are large and better spaced than the non-resistant strains, and the foliage is clean, healthy and free from rust.

★ **Alaska.** Large creamy white flowers. The plants are free flowering, each producing 12 to 14 spikes.

★ **Apple Blossom.** Rosy pink, white tube; huge flowers; 8 to 15 long stems to a plant.

★ **Campfire.** Pure luminous scarlet, free from orange or bluish tinges; yellow lip. Each plant produces 15 to 18 very tall spikes;

★ **Canary Bird.** Canary-yellow. 12 to 14 stems per plant.

★ **Crimson.** 8 to 10 long flower-spikes per plant. Flowers are very large, pure crimson overlaying a ground of orange.

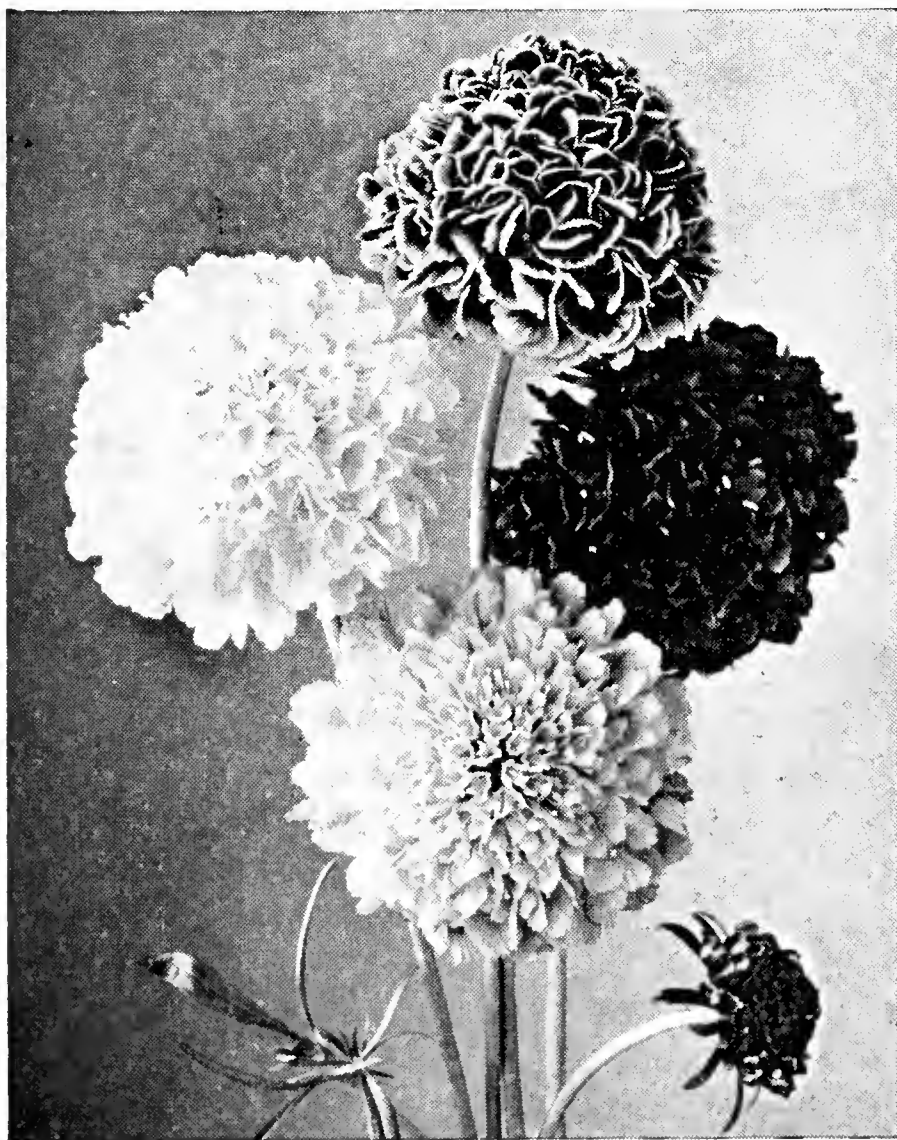
★ **Fair Lady.** Pure pink, small yellow spot at the lip; white tube. Very large flowers; 12 to 18 spikes to a plant.

★ **Loveliness.** 12 to 16 long, strong spikes of pure, soft rose-pink, huge flowers are produced to a plant.

★ **Red Cross.** Deep, rich crimson with contrasting, glistening white tubes. 15 to 18 flower-spikes to a plant.

★ **Copper Shades.** Deep, rich, velvety copper-orange to the lightest coppery old-gold with yellow lips of varying sizes. Each plant has 12 to 16 long spikes.

Collection: 1 Pkt. each above 9 varieties for \$1.10.
All Varieties Mixed. All the above colors as well as other rust-resistant maximum snapdragons.



Scabiosa Giant Flowered

Dwarf Sunflowers . . Fine for Cutting . . Grow Easily

SWEET ROCKET (Hesperis). HP. Dame's Rocket; grows 2 to 3 feet high with spikes of showy, fragrant flowers.
Purple. Dark shade. Pkt. 10 cts.; ¼ oz. 25 cts.
White. Fine. Pkt. 10 cts.; ¼ oz. 25 cts.

STATICE (Sea Lavender). HA. Produces all summer panicles of small flowers which can be dried for winter bouquets.
Kampf's Tall Blue. Pkt. 25 cts.
Rosea Superba. Deep rose. Pkt. 10 cts.
Mixed Colors. Pkt. 10 cts.

SNOW ON THE MOUNTAIN See Euphorbia, page 8.

STRAWFLOWER See Everlasting Flowers, page 8.

STOCKS HA. These popular flowers are easily grown and have many good qualities. Require sandy soil.

WILSON'S GIANT PERFECTION

All same price—25 cts. per pkt.; \$1.00 for ¼ oz.
 Of splendid pyramidal growth, freely branching giving an abundance of large spikes of double flowers from summer until fall. 2 feet.
White (Princess Alice).
Dark Blue.
Silvery Lilac (Empress Augusta Victoria).
Light Blue (May Queen).
Creole. Canary yellow.
Flesh Color.
Brown Red. Coppery red. Very attractive.
Rose. Exquisite shade.
Collection: 1 pkt. each of above 8 colors, \$1.75.

GIANT-FLOWERING BEAUTY

All same price—25 cts. per Pkt. \$1.00 per ¼ oz.
 Early-flowering forming much-branched plants about 2 feet high, having numerous spikes of large, double, fragrant flowers; they are of special value as pot-plants for greenhouse and for cutting; for this purpose seed should be sown from July to September.

Almond Blossom. White, shaded carmine.
Beauty of Nice. Deep flesh.
Modt Blanc. Purest white.
Monte Carlo. Canary-yellow.
Queen Alexandra. Rosy lilac.
Summer Night. Dark blue.
Souvenir de Monaco. Crimson.
Abundance. Rose pink.
Collection: 1 Pkt. each of above 8 colors, \$1.75.

DWARF LARGE-FLOWERING MIXED

For outdoor sowing. Pkt. 10 cts.; ¼ oz. 60 cts.

SUNFLOWERS (Helianthus) HA. Plants of majestic growth and immense showy flowers, suitable for shrubberies, and sub-tropical gardening; the dwarf kinds, with smaller flowers, are charming in mixed borders.

LARGE-FLOWERED TALL

Sutton's Red Sunflower. 4 to 8 feet. Some flowers chestnut-red, others tipped yellow and others slightly washed with red. Pkt. 10 cts.
Globe-Flowered Double. 6 feet. Flowers a rich saffron color. Pkt. 10 cts.; ¼ oz. 20 cts.
Russian Mammoth. Single. Pkt. 5 cts.; oz. 20 cts.

MINIATURE-FLOWERED SINGLE AND DOUBLE Average Height 4 Feet

Spreading bushes with graceful foliage and elegantly formed flowers borne for a long time in succession; invaluable as cut-flowers.

Double Chrysanthemum-Flowered. Golden yellow flowers. Fine. Pkt. 10 cts.; ¼ oz. 25 cts.
Stella. Large golden-yellow petals; small, dark center. Pkt. 10 cts.; ¼ oz. 25 cts.
Excelsior Hybrids. The colors are pale yellow, golden yellow, and creamy white, some with black centers. Pkt. 10 cts.; ¼ oz. 25 cts.
Orion. Petals rolled, resembling Single Cactus Dahlia. Yellow dark center. Pkt. 10 cts.
Diadem (Venus). Lemon yellow flowers with black centers. Fine. Pkt. 10 cts.; ¼ oz. 25 cts.

SWEET PEAS HAC. **Wilson's Silver-Gilt Medal Mixture of Spencers.** One oz. seed for 20 foot row. A beautiful blend of all the best and newest varieties. Each color class is properly proportioned so that the mixture will give a harmonious whole. Pkt. 10 cts.; oz. 30 cts.; ¼ lb. \$1.00; 1 lb. \$3.50. (Sweet Peas in separate colors at same price.)

SUMMER CYPRESS. See Kochia, page 9.

SWEET SULTAN. See Centaurea, page 5.

SWEET WILLIAM (London Tufts; Dianthus barbatus). HP. Well-known, attractive, hardy perennials. It is better to raise new plants from seed every season than to divide the old ones.

Giant White. Pkt. 10 cts.

Pink Beauty. Pkt. 10 cts.

Scarlet Beauty. Pkt. 10 cts.

1 Pkt. each of the 3 colors for 25 cts.

Double Mixed. Very fine. Pkt. 10 cts.

Single Mixed Giant Hybrids. Pkt. 10 cts.

Single Mixed Dwarf Compact. Pkt. 10 cts.

TAGETES SIGNATA PUMILA. See Marigold, p. 10.

TITHONIA HA. **Speciosa, Early Flowering** (Golden Flower of the Incas). 8 feet. The flowers resemble a giant single zinnia of vivid orange-scarlet borne on huge bushes with woody stems, and large leaves. From seed started in March plants in full sun will blossom in late August. Pkt. 25 cts.

TRITOMA (Red-Hot Poker). HP. Handsome border plants. Flowers borne in compact form on stout 3 and 4 foot stems, having the appearance at a distance of orange and red colored spear heads. Require protection during winter.

Hybrida Early-Flowering Mixed. Many interesting colors. Pkt. 25 cts.

URSINIA (Spenogyne) HAR. Anethoides. Excellent for edgings. The orange, daisy-like flowers have purple and black centers. 1 foot. Flowers all summer. Pkt. 15 cts.

VENIDIUM FASTUOSUM Hybrids. HA. 2 to 3 feet.
(MONARCH OF THE VELDT)

A unique annual from South Africa. In this mixture are included white, cream, lemon, yellow, orange and buff, each flower 3 to 4 inches across with black centers. Plant in full sun. Pkt. 25 cts.; 5 for \$1.00.

VIOLA CORNUTA (Tufted Pansy) HPR. Very hardy. Fine for edging or for the Rock Garden. 6 inches.
Apricot. Yellow. Pkt. 15 cts.
White Perfection. Pkt. 15 cts.



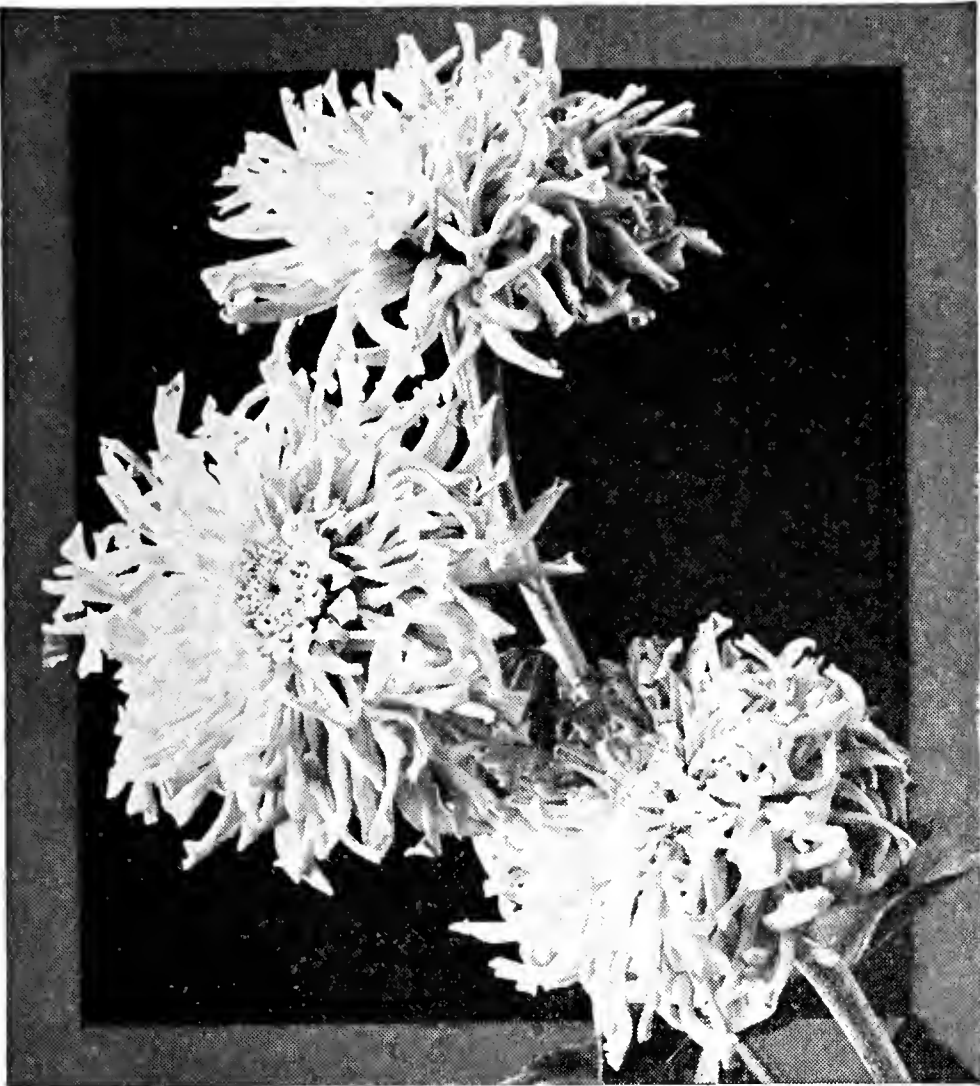
Dwarf Double Sunflower

No Annuals Are More Valuable Than Zinnias

★ INDICATES OUTSTANDING 1939 AND RECENT INTRODUCTIONS

WILSON'S MAMMOTH ZINNIAS

HA. Few, if any, of the annuals have greater utility value. Seeds may be sown either indoors or started outdoors in May and transplanted later.



Zinnia Fantasy

WILSON'S GIANT DAHLIA FLOWERED ZINNIAS

The plants are very sturdy. The broad petals of the flowers are closely imbricated, seeming to be piled one upon the other. The flowers often measure 2 1/4 inches in depth and 4 to 6 inches in diameter. They compare favorably with the Show Dahlias. 2 to 3 feet.

- Canary Bird.** Beautiful canary-yellow.
- Old Rose.** The name describes this beautiful sort.
- Crimson Monarch.** Shining crimson-scarlet.
- Exquisite.** A lovely shade of rose deeper toward the center.
- Illumination.** Fiery orange of magnificent size.
- Polar Bear.** Monstrous flowers of purest white.
- Golden State.** An immense orange yellow.
- Dream.** Fine deep lavender.
- Shrimp Pink.** Pure pink.

All above same price: Pkt. 10 cts.; 1/8 oz. 35 cts.; 1/4 oz. 60 cts.; 1 oz. \$2.00.

Collection: 1 Pkt. each of the 9 sorts, for 80 cts.

Gold Medal Hybrids. A special mixture of above and other colors. Pkt. 10 cts.; 1/8 oz. 25 cts.; 1/4 oz. 45 cts.; 1 oz. \$1.50.

CALIFORNIA GIANT ZINNIAS

Brilliant flowers of gigantic size and perfect form, with loosely arranged petals. Height, 2 to 3 feet.

- Enchantress.** Bright rose with darker center.
- Grenadier.** Brilliant darkest rose.
- Lemon Queen.** Lemon orange.
- Orange King.** Burning orange.
- Orange Queen.** Golden yellow.
- Purity.** Pure white.
- Salmon Queen.** Rich salmon rose.
- Scarlet Gem.** Fiery scarlet.
- Violet Queen.** Purple.

All of the above same price: Pkt. 10 cts.; 1/8 oz. 30 cts.; 1/4 oz. 50 cts.; 1 oz. \$1.50.

Collection: 1 Pkt. each of above 9 colors, 75 cts.
California Giant Mixed. All colors. Pkt. 10 cts.; 1/8 oz. 25 cts.; 1/4 oz. 40 cts.; 1 oz. \$1.25.

POMPON (LILLIPUT) OR BABY ZINNIAS

The plants form handsome little bushes and fairly bristle with tiny, short-stemmed, very double flowers hardly exceeding a daisy flower in size.

White, Scarlet, Rose, Purple, Golden yellow; each Pkt. 10 cts.; 1/4 oz. 25 cts.

Mixed Colors. Pkt. 10 cts.; 1/4 oz. 25 cts.

DWARF DOUBLE (PUMILA). Extra double flowers produced abundantly on bushy plants. 1 1/2 feet. Mixed Colors. Pkt. 10 cts.; 1/4 oz. 25 cts.

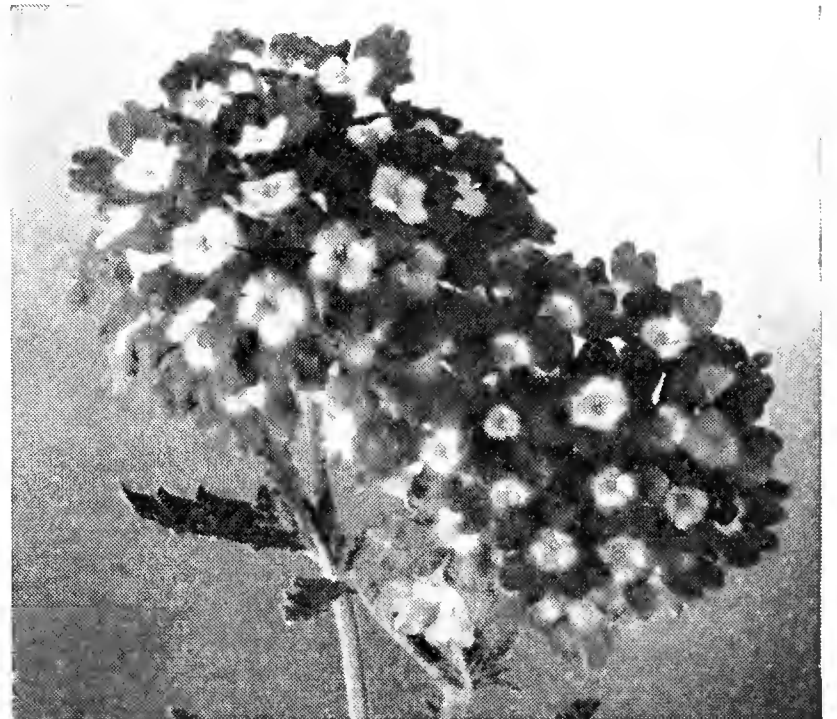
★ **FANTASY ZINNIAS MIXED.** 2 feet. Petals curved and partially quilled like those of the Cactus Dahlia. Pkt. 20 cts.; 1/8 oz. 40 cts.

FANTASY ZINNIA. Star Dust. Golden yellow. Pkt. 20 cts.

★ **SCABIOUS-FLOWERED ZINNIAS.** 2 feet. The flowers of medium size, are produced in profusion and resemble Scabious. Mixed, Pkt, 15 cts.; 1/4 oz. 50 cts.

★ **TOM THUMB ZINNIAS MIXED.** All colors. This dainty gem grows only six (6) inches high but produces flowers in abundance. Ideal for borders. Pkt. 15 cts.; 1/8 oz. 30 cts.; 1/4 oz. 50 cts.

MEXICAN HYBRID DOUBLE. Miniature zinnias in various shades of brown and orange. Height, 18 inches. Pkt. 10 cts.; 1/4 oz. 35 cts.



Mammoth Verbena

VINCA (Periwinkle). HA. Of easy cultivation. Fine for pots and bedding. Stands shade.

rosea. Rose. Pkt. 10 cts.

rosea alba. White, rose eye. Pkt. 10 cts.

alba pura. Pure white. Pkt. 10 cts.

VERBENA HA. 1 foot. One of the finest bedding and border plants.

Mammoth Strain. (Gigantea). Enormous flowers. The individual blooms measure an inch in diameter. The plants branch freely. All Pkt. 15 cts.

Etna. Intense geranium red. Beautiful.

Lucifer. The most vivid scarlet imaginable.

White. Pure white flowers of giant size.

Luminosa. Luminous flame-pink flowers. Showy.

Spectrum Red. Intense bright crimson.

Mixed Colors. Extra. Pkt. 15 cts.; 1/8 oz. 40 cts.

One Pkt. each of the 5 separate sorts for 60 cts.

WALLFLOWER HA and HP. Beautiful, fragrant flowers, blooms in spring.

Annual, Flowering First Year If Sown Early.
Earliest Paris, Single Mixed. Pkt. 10 cts.

Perennial Sorts.

Finest Double Mixed. Pkt. 25 cts

Covent Garden. Blood red. Pkt. 10 cts.

Harbinger. Early light brown. Pkt. 10 cts.

XERANTHEMUM

See Everlastings, page 8.

FLOWER CULTURAL DIRECTIONS

SOWING ANNUALS

All annuals can be sown in the garden in May when the ground is warm, either in a seed-bed or directly where they are to grow. There are some, such as Poppies, Eschscholtzia, Mignonette, Centaurea, etc., which, on account of lack of fibrous roots, cannot be transplanted without setback. These should be sown, either broadcast or in rows, in the location desired. Most annuals, however, benefit by being transplanted so as to develop a better root-system. These are better started in a cold-frame on a prepared seed-bed deeply dug and finely sifted. Most flower seeds are small and should be covered with only about $\frac{1}{8}$ inch of soil; the very fine seeds are simply pressed into the soil. Water carefully, so as not to wash the seed out, and keep the soil moist. On warm, sunny days some shade should be given. When the seedlings are large enough to handle, they can be transplanted 1 inch apart into another seed-bed, or if they are not too close together, they may be left in the original bed until large enough to transplant into permanent places. Always remember that flowers need good soil, an open sunny situation, and sufficient space between the plants.

STARTING SEEDS IN HOTBEDS OR BOXES

Many annuals, such as Snapdragons, Stocks, Asters, Carnations, Cockscomb, Cosmos, Dahlias, Pinks, Heliotrope, Lobelia, Pansies, Petunias, Phlox, Salpiglossis, Salvia, Vinca, Verbena, if sown outside do not bloom until quite late in the summer, but you can have them early if you sow the seed in the hotbed. March is about the best time except for Lobelias, and Stocks, which can be started in February. Sow either directly in the hotbed in shallow drills or in pans or boxes. The soil should be light, finely sifted, and well watered. Scatter seeds evenly, not too thinly. After sowing press the soil down with a flat board and cover with newspaper to prevent too rapid evaporation. This covering must be removed as soon as the seedlings are up. Always water through a fine rose, and only when necessary, with tepid water and as much as possible in the forenoon or midday on bright sunny days. When seedlings have four leaves, transplant in similar boxes 1 inch apart or singly into small pots, shifting into larger ones if necessary. Ventilate according to the weather and gradually harden the plants, setting them out when all danger of frost is past and the soil is warm. Cultivate frequently and stimulate plant growth by applying a top dressing of cow manure or bone meal to the soil at frequent intervals. Keep seed-pods removed; never allow withered flowers to remain on the plants if you want them to bloom all season.

HOW TO GROW PERENNIALS

Perennials will bloom the second year from seed and are permanent thereafter. Most of them are so hardy that they do not require protection during winter. We find among them some of our most beautiful cut-flowers and many of the old-fashioned favorites. A hardy border is a continual source of joy; from earliest spring to late autumn it will be resplendent with color. Once established, such borders need no other attention than to be kept free from weeds and to be given an occasional top-dressing with fertilizer.

WHEN TO SOW PERENNIALS

Many of the hardy flowers will bloom the first year from seed if sown in the hotbed in February or March. Outdoors they may be sown any time from May 1st to August. A coldframe is an ideal place, but, if you have no coldframe, prepare a seed-bed of finely sifted light soil, made rich by adding and mixing with it cow manure or bone-meal. Sow the seed in shallow drills or squares of suitable size, partitioned off with laths; cover $\frac{1}{8}$ inch or more, according to the size of the seed—the very fine ones should only be pressed into the soil with a flat board—water gently but thoroughly and do not allow the soil to become dry while the seed is in process of germination, for as soon as the seed has sprouted and until it becomes a plant with roots, its life depends entirely on soil-moisture. Seed-beds must be shaded from the sun in summer and carefully watched and watered until the plants have made from four to five leaves. Most hardy flower seeds germinate in from eight to fourteen days, though some take a month or more, so do not become impatient. If seedlings come up too thick, pull out some and transplant elsewhere in boxes or other seed-beds, and when the plants are large enough set them out in their permanent places. This should not be done later than October 1st, in order to allow sufficient time for them to take firm root before frost. Cover with leaves or salt hay, applied after the ground is frozen.

FLOWERS GROUPED FOR SPECIAL USES

For Cut Flowers

Agrostemma
Anchusa
Antirrhinum
Arctotis
Calendula
Calliopsis
Candytuft
Carnation
Centaurea
Chrysanthemum
Clarkia
Cosmos
Coreopsis
Dahlia
Delphinium
Didiscus
Gaillardia
Gladiolus
Gypsophila
Helichrysum
Lupin
Marigold
Nasturtium

Nigella
Pyrethrum roseum
Salpiglossis
Scabiosa
Schizanthus
Shasta Daisy
Sweet Pea
Zinnia

For Semi-Shade

Balsam
Campanula
Centaurea
Clarkia
Godetia
Lupin
Mignonette

For Late Bloom

Alyssum, Sweet
Aster
Calendula
Celosia
Cosmos
Dahlia

Gaillardia
Globe Amaranth
Hunnemania



Scabiosa

Marigold
Salvia
Vinca
Zinnia

For Withstanding Drought

Alyssum
Ageratum
Arctotis
Brachycome
Calliopsis
Candytuft
Cosmos
Dimorphotheca
Euphorbia
Four-o'clock
Humulus japonicus
Lavender
Lupins
Petunia
Portulaca
Statice
Sunflower
Tithonia
Verbena
Vinca
Zinnia

For Window Boxes

Ageratum
Begonia
Geranium
Heliotrope
Lantana
Lobelia, Annuals
Morning Glory
Nasturtium, Dwarf
Petunia
Phlox drummondii
Verbena

For Rock Gardens

Alyssum, Sweet
Brachycome
Dimorphotheca
Lobelia, Annuals
Phlox drummondii
Portulaca
Schizanthus
Statice
Verbena

WILSON'S FINE VEGETABLE SEEDS

They're Tested

ASPARAGUS ROOTS

150 Roots to a Bed 15x50 Feet, or 8,000 to the Acre

MARY WASHINGTON ASPARAGUS. This strain produces large straight shoots, dark green in color with heavy purple overtone. It is nearer to being rust-proof than any other variety.

Roots. 2-year-old, 75 cts. for 25; \$2.50 per 100; \$20.00 per 1,000.

WILSON'S BEANS

GREEN-POD BUSH

1 lb. Will Sow Thinly a Row 200 Feet Long;

60 to 90 lbs. to the Acre.

Mature in 40 to 50 days from germination. Average height, 15 inches. Average yield, 125 to 150 bushels pods to acre.

WILSON'S BOUNTIFUL. Long, fleshy, flat, broad pods, tender and brittle and absolutely stringless; very early and productive.

GIANT STRINGLESS. Round meaty pods. Fine flavor. Does well in any soil but prefers heavier clay.

STRINGLESS GREEN POD. Long, round pods; early; stringless at all stages. A heavy yielder.

KING OF THE EARLIES. (Black Valentine.) Round pods; very early and a heavy yielder. Hardy and can be planted earlier than others.

VALENTINE, EXTRA EARLY RED. Round pods.

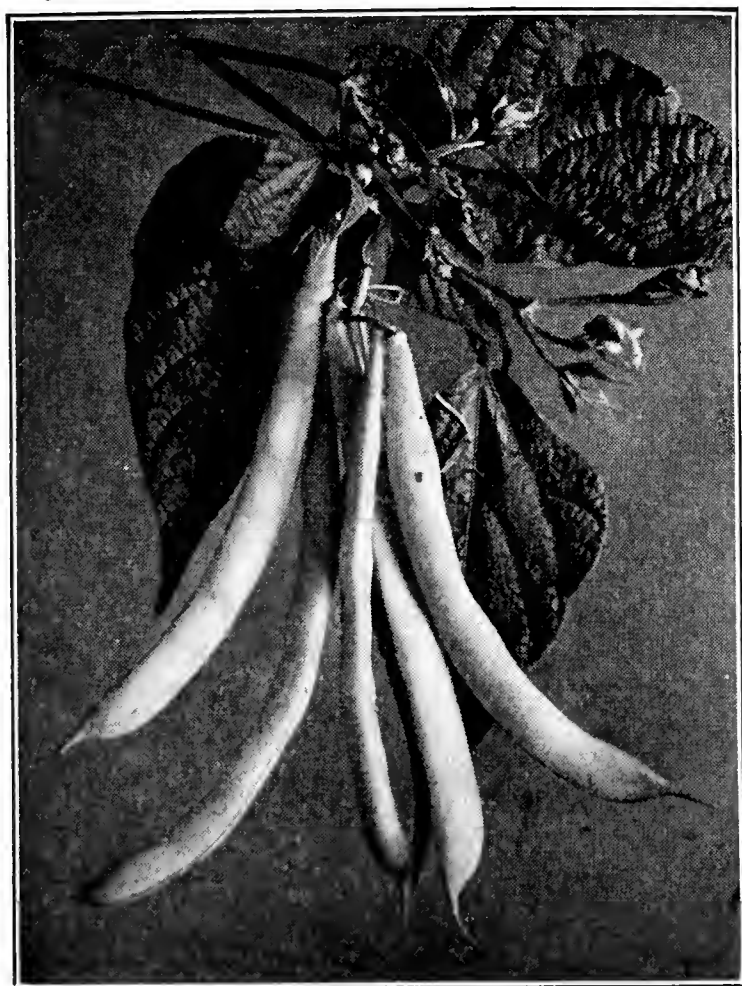
REFUGEE, EXTRA EARLY. Round, light green pods.

REFUGEE LATE, OR 1,000-TO-1. For pickling.

ENGLISH BROAD WINDSOR. Very hardy; height about 3 feet. Sow as early as the ground can be worked to get into pod before heat sets in.

PRICES OF GREEN-POD BUSH BEANS

Pkt.	½ lb.	1 lb.	2 lbs.	5 lbs.
10 cts.	20 cts.	35 cts.	65 cts.	\$1.50



Wilson's Bountiful Beans

WAX OR YELLOW-POD BUSH BEANS

1 lb. Will Sow Thinly a Row 200 Feet Long; 60 to 90 lbs. to the Acre

Mature in 40 to 50 days from germination. Average height, 15 inches. Average yield, 125 to 150 bushels pods to acre.

WILSON'S SURE CROP STRINGLESS WAX (California Rust-Proof). Black-seeded; pods of good size, thick and flat and of excellent quality. Very early.

WILSON'S IMPROVED GOLDEN WAX. Long, flat, meaty, yellow pods. Early; very productive.

BRITTLE WAX, Round Pod Kidney Wax. Early, of vigorous growth, heavy yielder; pods long, round; entirely stringless; fine flavor. One of the best.

WARDWELL KIDNEY WAX. Long, handsome, almost straight, flat pods. Very prolific.

PRICES OF WAX BEANS

Pkt.	½ lb.	1 lb.	2 lbs.	5 lbs.
10 cts.	20 cts.	35 cts.	65 cts.	\$1.50

DWARF, OR BUSH LIMA BEANS

1 lb. will sow a row about 100 feet long; 45 lbs. to the acre. Mature in 60 to 80 days, two weeks earlier than Pole Limas. Liberal Packets 15 cts. each.

FORDHOOK BUSH. Large pods; very productive; quality unsurpassed. 1 lb. 40 cts.; 2 lbs. 75 cts.; 5 lbs. \$1.60.

IMPROVED BUSH LIMA. Larger than the foregoing, heavy yielder, and early. Very popular. ½ lb. 20 cts.; 1 lb. 35 cts.; 2 lbs. 65 cts.; 5 lbs. \$1.50.

BUSH LIMA, HENDERSON'S. Small seed; productive; early. 1 lb. 35 cts.; 2 lbs. 65 cts.; 5 lbs. \$1.25.

POLE LIMA BEANS

2 lbs. Will Plant About 150 Hills. Mature in 90 Days.

EARLY LEVIATHAN. Earliest of all; enormous pods and Beans; great yielder.

CHALLENGER (Potato Lima). Very productive; thick pods and beans.

KING OF THE GARDEN. Large pods averaging 5 to 6 inches long, in great profusion; large Beans.

GIANT PODDED. Vigorous grower; large pods, often 7 inches long and 1½ inches broad. Beans extra large and thick and of fine flavor.

PRICES OF POLE LIMA BEANS

Pkt.	½ lb.	1 lb.	2 lbs.	5 lbs.
10 cts.	20 cts.	40 cts.	75 cts.	\$1.75

POLE, STRING OR SHELL BEANS

KENTUCKY WONDER—OLD HOMESTEAD. Round pods 7 to 9 inches long; stringless. Sweet and tender.

KENTUCKY WONDER—White Seeded. Straight pods 6 to 8 inches long. Very brittle and meaty. Beans fine for winter use.

SCARLET RUNNER. Largely grown for ornamental purposes.

PRICES OF ABOVE BEANS

Pkt.	½ lb.	1 lb.	2 lbs.	5 lbs.
10 cts.	20 cts.	35 cts.	65 cts.	\$1.25

We Carry a Full Line of Vegetable Plants in Season

BRUSSELS SPROUTS

One Ounce Will Produce 3,000 Plants

Mature in About 150 Days

WILSON'S LONG ISLAND IMPROVED. Very tender; prolific. Pkt. 10 cts.; 1 oz. 30 cts.; ¼ lb. \$1.00; 1 lb. \$3.50.

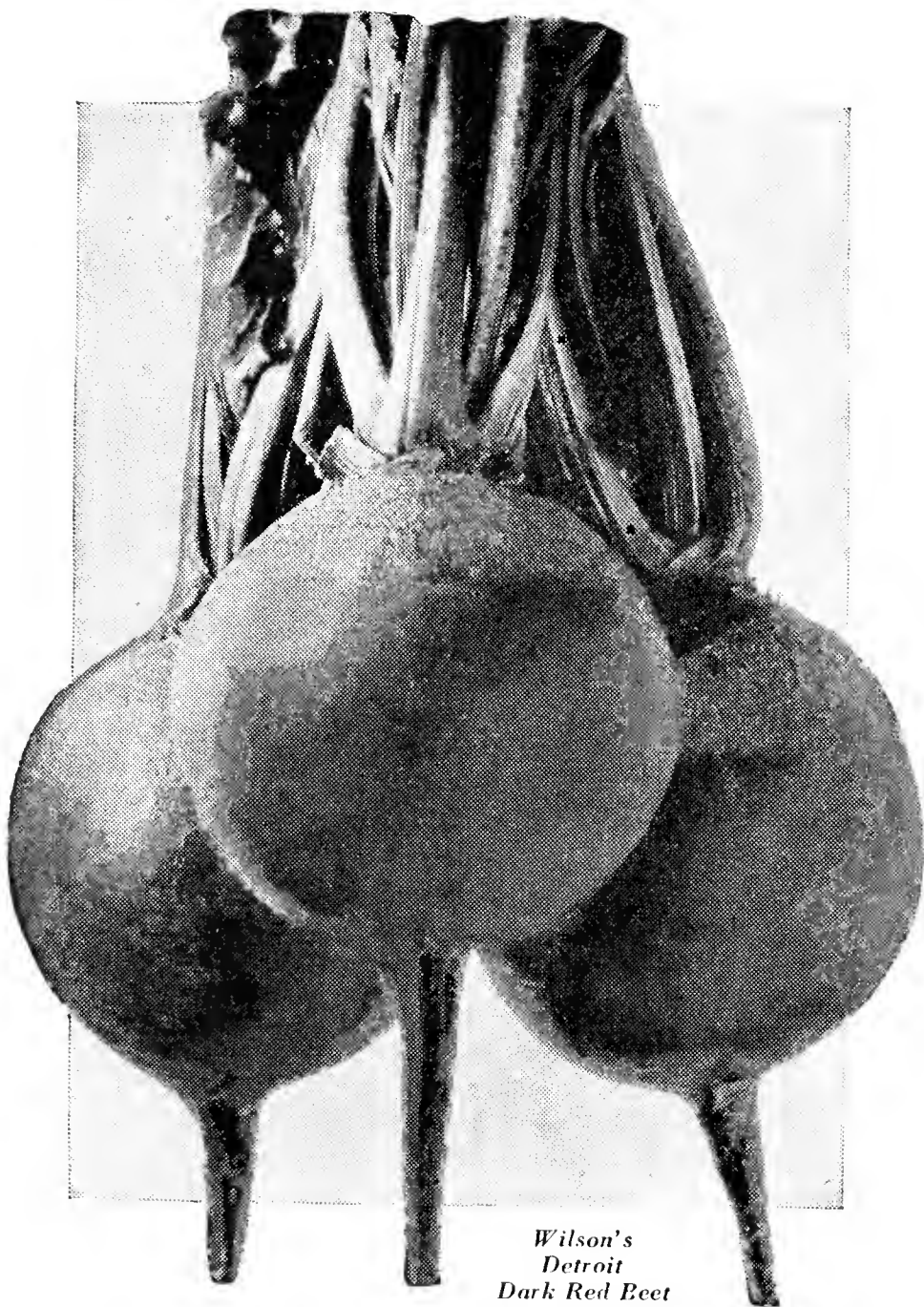
GARDEN BEETS

CAREFULLY SELECTED SEED

One Ounce Will Sow a Row 50 Feet Long
6 to 7 Pounds to the Acre

Ready for Table 40 Days After Sowing

WILSON'S DETROIT DARK RED. Globular; deep vermilion flesh, very sweet and tender. For early or late sowing; our seed produces the darkest colored beets of unusual sugar content.



*Wilson's
Detroit
Dark Red Beet*

WILSON'S EARLY PRIZE BLOOD. Very early and uniform. Almost round, deep ox-blood color, small tap-root; medium top. Tender and sweet.

WILSON'S CROSBY'S EGYPTIAN. Deep red flesh, slightly zoned; very smooth, tender and sweet. Very early; good shape and size.

WILSON'S CRIMSON GLOBE. A second-early globe-shaped Beet of medium size. The flesh is rich, blood-red, very sweet and free from stringiness.

PRICES OF ABOVE BEET SEED

Pkt.	oz.	¼ lb.	lb.
10 cts.	15 cts.	40 cts.	\$1.25

MANGEL-WURZEL

For Your Cows and Chickens

1 oz. 10 cts.; ¼ lb. 25 cts.; 1 lb. 80 cts.

Two Ounces to 100 Feet of Row; 6 lbs. to the Acre
Mature in 80 to 120 days.

Sow in May or June in rows 2 feet apart and thin to 9 inches in the row. Cultivate well.

MAMMOTH LONG RED. Very large; flesh white, tinged with rose.

KLEIN WANZLEBEN SUGAR BEET.

Vegetable Plants in Season

We shall have a complete selection of the more popular vegetable plants from mid-April to June. Our plants are grown from our own seed especially for sale by us.

SWISS CHARD

or CUT-AND-COME-AGAIN SPINACH

WILSON'S GIANT DARK GREEN. A splendid smooth leaved sort. Very large leaves, and broad white ribs, remarkably tender. Pkt. 5 cts.; 1 oz. 15 cts.; ¼ lb. 40 cts.; 1 lb. \$1.25.

LUCULLUS. (Large smooth.) Larger than above; light green smooth leaves. The large almost white heavy mid-ribs are delicious cooked as Asparagus. Pkt. 5 cts.; 1 oz. 15 cts.; ¼ lb. 40 cts.; 1 lb. \$1.25.

PERPETUAL SPINACH. A form of Swiss Chard; tastes like spinach. It is very hardy and withstands severe summer heat. You can count on a constant supply of tender "greens" all summer and autumn. Price: Pkt. 5 cts.; 1 oz. 15 cts.; ¼ lb. 40 cts.; 1 lb. \$1.25.

BROCCOLI

CALABRESE IMPROVED (Italian Green Sprouting). A distinct variety. Plant forms a large, solid head which remains green. When the central head is cut, numerous sprouts develop from the leaf axis, each sprout terminating in small green heads. Matures in about 80 days from our selected seed. Pkt. 10 cts.; ¼ oz. 20 cts.; ½ oz. 30 cts.; 1 oz. 60 cts.

RAPA (Spring Broccoli). Produces small green heads which are cut and bunched. Developed from the Turnip family. Sow in Spring or Fall. Pkt. 10 cts.; 1 oz. 25 cts.; ¼ lb. 75 cts.

The kiss of the sun for pardon,
The song of the birds for mirth—
One is nearer God's heart in a garden
Than anywhere else on earth.

—D. F. Gurney

Use More "Greens"—Try Broccoli This Year

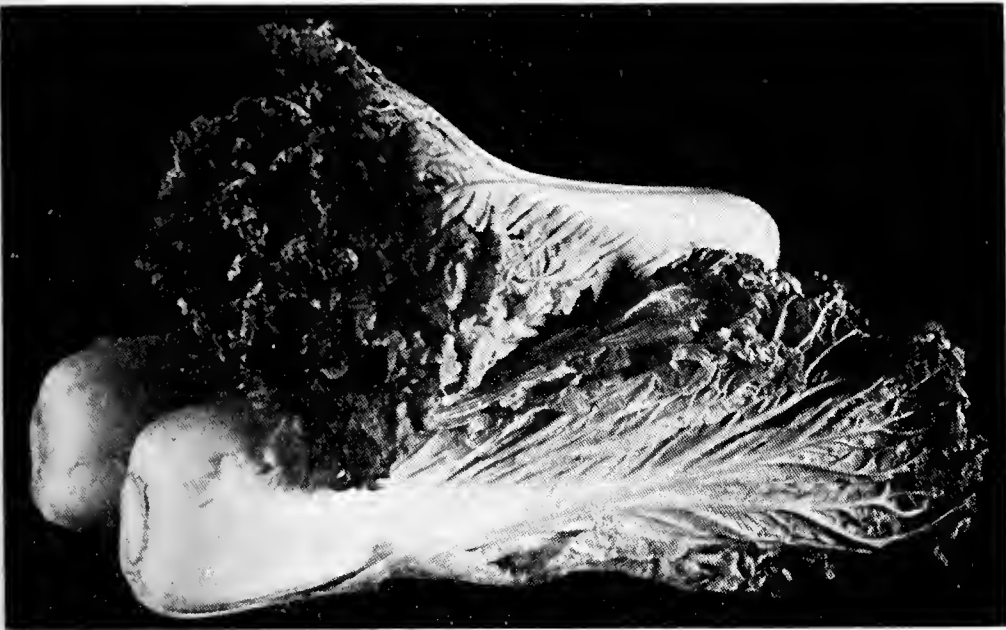
CABBAGE EARLY AND LATE

All 10 cts. Per Liberal Packet

One Ounce Will Produce About 2,000 Plants; 4 Ounces Will Produce Enough Plants for One Acre. Matures in 65 to 120 Days

COPENHAGEN MARKET. Distinctly early. Plant small, compact, allowing very close planting; stem short; heads round, firm; 6 to 7 inches in diameter. Of excellent quality. $\frac{1}{2}$ oz. 20 cts.; 1 oz. 35 cts.; $\frac{1}{4}$ lb. \$1.00.

GOLDEN-ACRE CABBAGE. A small, early, very fine variety, with round, solid heads. The outer leaves are small, permitting close planting. Very suitable for growth under glass and for the suburban gardener. $\frac{1}{2}$ oz. 25 cts.; 1 oz. 45 cts.; $\frac{1}{4}$ lb. \$1.50.



Pe Tsai Chinese Cabbage

WILSON'S NEW EARLY GIANT SOLID HEAD. Matures after Wakefield. It is round and does not crack easily. It has done splendidly under dry weather conditions, developing perfect solid heads. Keeps well. $\frac{1}{2}$ oz. 25 cts.; 1 oz. 45 cts.; $\frac{1}{4}$ lb. \$1.50.

EARLY JERSEY WAKEFIELD. Very early, sure-heading; largely grown by home gardeners. Medium sized, pointed heads, solid and of good quality. $\frac{1}{2}$ oz. 20 cts.; 1 oz. 35 cts.; $\frac{1}{4}$ lb. \$1.00.

PREMIUM LATE FLAT DUTCH. Large, flat heads, uniform, solid and of finest quality. For winter use. $\frac{1}{2}$ oz. 20 cts.; 1 oz. 35 cts.; $\frac{1}{4}$ lb. \$1.00;

DANISH BALLHEAD, or HOLLAND. Medium-sized round heads of good quality. One of the best for winter keeping. $\frac{1}{2}$ oz. 20 cts.; 1 oz. 35 cts.; $\frac{1}{4}$ lb. \$1.00.

PERFECTION DRUMHEAD SAVOY. The best of all Savoys for the home garden; grows strong and vigorous with dense, crumpled leaves and solid heads. $\frac{1}{2}$ oz. 20 cts.; 1 oz. 35 cts.; $\frac{1}{4}$ lb. \$1.

MAMMOTH RED ROCK. Fine for pickling. Round solid heads, dark red. $\frac{1}{2}$ oz. 20 cts.; 1 oz. 35 cts.; $\frac{1}{4}$ lb. \$1.00.

PE TSAI CHINESE CABBAGE (SELF CLOSING)
Be sure to grow some. Resembles cos lettuce. It yields an unusual amount of excellent salad. Cut up like cabbage it makes splendid cole-slaw. Can be boiled like cabbage. The hearts blanch to a crystalline white. Sow in August and thin plants to stand 18 inches apart in $2\frac{1}{2}$ foot rows. Do not transplant. Pkt. 10 cts.; $\frac{1}{2}$ oz. 20 cts.; 1 oz. 35 cts.; $\frac{1}{4}$ lb. \$1.25.

CARROTS TENDER — SWEET

All 10 cts. Per Liberal Packet

One Ounce Will Sow a Row 75 Feet Long; Four Pounds to Acre. Ready for Table 60 to 70 Days from Sowing.

WILSON'S RESELECTED RUBICON. Selected Seed. Half long; stump rooted; fine grained, practically coreless, rich orange red flesh; medium early; extra fine. 1 oz. 20 cts.; $\frac{1}{4}$ lb. 50 cts.; 1 lb. \$1.50.

WILSON'S DANVERS HALF LONG. Selected Seed. Adapts itself to all soils. A great producer; sweet and crisp. 1 oz. 20 cts.; $\frac{1}{4}$ lb. 50 cts.; 1 lb. \$1.50.

SCARLET HORN, OR SHORT HORN. Early, medium sized, half long sort of fine color and flavor. Very tender. 1 oz. 20 cts.; $\frac{1}{4}$ lb. 50 cts.; 1 lb. \$1.50.

IMPERATOR. Very productive; uniform in shape; brittle, tender and sweet. Grows about 8 inches long with broad tops. 1 oz. 15 cts.; $\frac{1}{4}$ lb. 50 cts.; 1 lb. \$1.50.

CAULIFLOWERS

One Ounce Will Produce About 2,000 Plants
Ready for Table in 90 to 120 Days

WILSON'S EXTRA EARLY PEDIGREE SNOWBALL. Earliest of all. The dwarfiest, most compact in habit of growth and the surest header. It produces very large, snow white heads either outdoors or under glass, and due to its dwarf habit can be planted 18 inches apart in rows. Pkt. 50 cts.; $\frac{1}{4}$ oz. \$1.25; 1 oz. \$4.00

WILSON'S EXTRA EARLY PEARL. Very early; sure header; medium to large; snow-white; deep and solid, compact heads of finest quality. Pkt. 25 cts.; $\frac{1}{4}$ oz. 85 cts.; 1 oz. \$3.00.

CHICORY FOR SALADS

One Ounce Will Sow 100 Feet of Drill

WITLOOF, or FRENCH ENDIVE. Our Extra Fine Strain. Leaves usually eaten raw as a salad; can also be cooked like endive. Pkt. 10 cts.; 1 oz. 25 cts.; $\frac{1}{4}$ lb. 75 cts.

MADGEBURG, LONG-ROOTED. Pkt. 10 cts.; 1 oz. 25 cts.; $\frac{1}{4}$ lb. 75 cts.

CICORIA CATALOGNA (Italian Dandelion.) A dwarf growing salad and greens plant greatly relished by Italians. Pkt. 10 cts.; 1 oz. 35 cts.; $\frac{1}{4}$ lb. \$1.25.

COLLARDS, GEORGIA A LOOSE-LEAF CABBAGE

Grows 3 feet tall and produces great quantities of dark green succulent leaves. Pkt. 5 cts.; 1 oz. 15 cts.; $\frac{1}{4}$ lb. 45 cts.

CORN SALAD FALL FAVORITE

(FETTICUS. ACRE SALAD)

Three Ounces Will Sow 100 Feet of Drill

LARGE LEAVED. Pkt. 10 cts.; 1 oz. 25 cts.; $\frac{1}{4}$ lb. 75 cts.

CRESS (PEPPER GRASS)

One Ounce Will Sow A Row About 50 Feet Long
Matures in 20 to 30 Days

FINE CURLED. Tender, piquant leaves. Pkt. 10 cts.; 1 oz. 15 cts.; $\frac{1}{4}$ lb. 40 cts.; 1 lb. \$1.35.

Use Dutox to Kill the Mexican Beetle; Swift and Sure

CELERY CRISP — NUTTY

All 10 cts. Per Liberal Packet

Matures in 110 to 150 days. One Ounce Will Produce About 3,000 Plants

WHITE PLUME IMPROVED. Early; a vigorous grower. Stalks large and uniformly white; requires only a short time to blanch. Pkt. 10 cts.; ½ oz. 20 cts.; 1 oz. 35 cts.; ¼ lb. \$1.25.

GIANT PASCAL. A large green Celery with golden yellow heart; easily blanched. Stalks thick, solid and crisp. An excellent keeper. Pkt. 10 cts.; ½ oz. 15 cts.; 1 oz. 30 cts.; ¼ lb. \$1.00.

EASY BLANCHING. A vigorous grower of medium height with thick stalks of excellent quality. Blanches easily, a splendid keeper. Pkt. 10 cts.; ½ oz. 20 cts.; 1 oz. 40 cts.; ¼ lb. \$1.25.

GOLDEN PLUME SELF-BLANCHING. Early; solid golden yellow; crisp and tender. Pkt. 10 cts.; ½ oz. 30 cts.; 1 oz. 60 cts.; ¼ lb. \$2.25.

WINTER QUEEN. Medium-dwarf, forms a good solid heart and blanches white; late keeper. Pkt. 10 cts.; ½ oz. 15 cts.; 1 oz. 25 cts.; ¼ lb. 75 cts.

SOUP OR CUTTING CELERY. Grown for the tops only. Pkt. 5 cts.; ½ oz. 10 cts.; 1 oz. 15 cts.; ¼ lb. 50 cts.

CELERIC Smooth Prague. (Knob Celery). Produces globular roots used for soups and stews. Pkt 10 cts.; ½ oz. 15 cts.; 1 oz. 30 cts.; ¼ lb. \$1.00.

WILSON'S SWEET CORN

One Pound Will Plant About 200 Hills; 10 Pounds to Acre. Ready for Table in 60 to 90 Days

GOLDEN CROSS BANTAM. A disease-resisting variety. Produces a heavier crop than G Bantam and more uniform ears. Pkt. 15 cts.; ½ lb. 30 cts.; 1 lb. 50 cts.; 2 lbs. 90 cts.; 5 lbs. \$2.00.

GOLDEN EVERGREEN, WILSON'S. Sweet and tender. Ears much larger than Bantam usually two to the stalk. A few days later than Bantam.

GOLDEN GIANT. A cross between Golden Bantam and Howling Mob. Matures about a week after Bantam and produces ears 8 inches long with luscious yellow kernels. Grows 5½ to 6 feet.

GOLDEN BANTAM, WILSON'S SELECT. Grows 4 feet high; golden ears with deep kernels of delicious flavor. Very early.

GOLDEN SUNSHINE. An improved Golden Bantam; a week earlier.

HOWLING MOB. Second-early. Large ears; tender and sweet. Can be sown as late as July 15th.

MAYFLOWER, WILSON'S EXTRA EARLY. Very early. Large ears of finest quality. 4 feet.

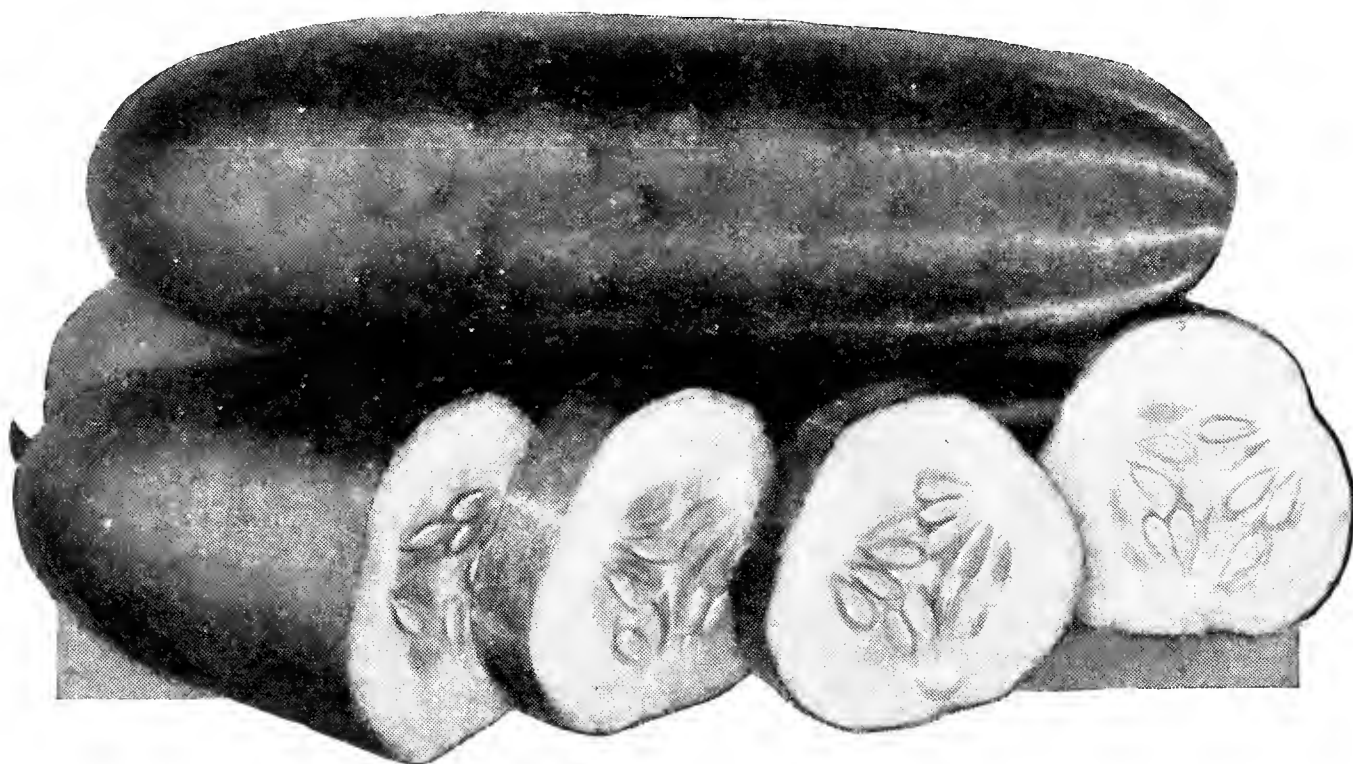
STOWELL'S EVERGREEN. A standard main-crop sort; very productive, tender and sweet.

COUNTRY GENTLEMAN. Small ears; late.

BLACK MEXICAN. Very sweet and tender.

PRICES OF SWEET CORN EXCEPT G. C. BANTAM

Pkt.	½ lb.	1 lb.	2 lbs.	5 lbs.
10 cts.	20 cts.	35 cts.	65 cts.	\$1.35



Longfellow Cucumber

CUCUMBERS

All 10 cts. Per Liberal Packet Except Telegraph One Ounce Will Plant About 50 Hills; 4 Pounds to Acre. Matures in 50 to 80 Days.

LONGFELLOW. Best of all. Long slender dark green; for outdoors or for forcing. Fruits 12 to 14 inches long. 1 oz. 40 cts.; ¼ lb. \$1.25.

WILSON'S EVERGREEN WHITE SPINE. Beautiful bottle green fruits, 8 to 9 inches long; flesh almost white. 1 oz. 25 cts.; ¼ lb. 75 cts.

WILSON'S LONG GREEN IMPROVED. Dark green fruits 10 to 12 inches long; firm, crisp and tender. 1 oz. 25 cts.; ¼ lb. 75 cts.

DAVIS PERFECT. Prolific and early. Fruits slim, often 10 inches long. 1 oz. 25 cts.; ¼ lb. 75 cts.

SNOW'S PERFECTION PICKLING. The earliest pickling cucumber. Produces fruits about the right size for bottling. Very productive. 1 oz. 25 cts.; ¼ lb. 85 cts.

GREEN PROLIFIC PICKLING (Boston Pickling). Extra early. 1 oz. 25 cts.; ¼ lb. 85 cts.

JAPANESE CLIMBING. Dark green fruits. Resistant to disease and insects. For slicing or pickling. May be grown on a trellis. 1 oz. 25 cts.; ¼ lb. 85 cts.

WEST INDIAN GHERKIN. Small, nearly round, used for pickles. 1 oz. 35 cts.; ¼ lb. \$1.25.

TELEGRAPH FRAME. For forcing. Very long. Pkt. 25 cts.

DANDELION

See Chicory, page 19.

EGG PLANT

Liberal Pkt. 10 cts.; ½ oz. 35 cts.; 1 oz. 65 cts.; ¼ lb. \$2.00.

One Ounce Will Produce About 1,000 Plants; 4,000 Plants to the Acre

Ready for the Table in About 140 Days

NEW YORK PURPLE, or SPINELESS. Early, vigorous and productive.

BLACK BEAUTY. Very early; large, purple black fruits.

ENDIVE

Pkt. 10 cts.; 1 oz. 20 cts.; 2 ozs. 35 cts.; ¼ lb. 50 cts. 1 lb. \$1.50

One Ounce to a 150 foot Row; 3 lbs. to the Acre Ready for the Table in About 60 Days

LARGE GREEN CURLED. Hardy; deep green leaves easily blanched to rich creamy white.

BROAD-LEAVED BATAVIAN (Escarolle). Very broad, flat, light green leaves; full hearted; very easily blanched.

FRENCH ENDIVE (Witloof) See Chicory, page 19.

Set Aside a Corner for a Little Patch of Herbs

AROMATIC — HERBS — MEDICINAL

Every garden should contain a few herbs, as they are useful in many ways. They can be grown as edgings to walks, and their fragrance will be distributed by the brushing of clothing against the plants while passing.

ANISE. For seasoning and for cordials. Pkt. 10 cts.; 1 oz. 35 cts.

BASIL, SWEET. For flavoring. Pkt. 10 cts.; 1 oz. 35 cts.

BORAGE. Excellent for bees. Pkt. 10 cts.; 1 oz. 35 cts.

DILL. For Dill pickles. Pkt. 10 cts.; 1 oz. 25 cts.

FENNEL, FLORENCE. Rounded thick leaf-bases. Pkt. 10 cts.; 1 oz. 30 cts.

LAVENDER. For perfuming. Pkt. 10 cts.; 1 oz. 50 cts.

SAGE. For seasoning. Pkt. 10 cts.; 1 oz. 75 cts.

SAVORY, SUMMER. Leaves and shoots are used for flavoring. Pkt. 10 cts.; 1 oz. 40 cts.

SWEET MARJORAM. Leaves used green in summer and dried in winter for flavoring. Pkt. 10 cts.; 1 oz. 40 cts.

THYME, BROAD-LEAVED ENGLISH. For seasoning and poultry stuffing. Pkt. 10 cts.; oz. 85 cts.

KALE OR BORECOLE FROST-RESISTING

One Ounce for About 5,000 Plants; 4 Pounds to Acre
Ready for Cutting in 50 Days.

DWARF GREEN CURLED SCOTCH. Large, finely curled leaves. Pkt. 10 cts.; 1 oz. 20 cts.; ¼ lb. 50 cts.; 1 lb. \$1.50.

SIBERIAN. Leaves large cut and frilled, with bluish tinge. Pkt. 10 cts.; 1 oz. 20 cts.; ¼ lb. 50 cts.; 1 lb. \$1.50.

SPRING, or SMOOTH KALE. This variety thrives best when planted in the Fall for cutting during the Winter. It is very hardy, a rapid grower, tender, and sweet when young. Pkt. 5 cts.; 1 oz. 15 cts.; ¼ lb. 30 cts.

TENDER — KOHLRABI — FINE GRAIN

Liberal Pkt. 10 cts.; 1 oz. 30 cts.; ¼ lb. 75 cts.;
1 lb. \$2.00.

One Ounce Will Sow a Row 200 Feet Long.
Ready in 60 Days

EARLY WHITE VIENNA. Light green, fine grained bulb; short leaves.

EARLY PURPLE VIENNA. Same as above, except in color.

MUSKMELON (CANTALOUPE)

All 10 cts. Per Liberal Packet

1 oz. 20 cts.; ¼ lb. 50 cts.; 1 lb. \$1.50

One Ounce Will Plant About 50 Hills; 4 lbs. to Acre
Ready for Use in 60 to 90 Days

EXTRA-EARLY KNIGHT OR MARYLAND. Oblong. Deep green skin turning golden yellow when ripe. The flesh is a beautiful green, shading to pink near seed cavity. Remarkably sweet. Early.

BENDER'S SURPRISE. A popular variety. It is a delicious, large fruit, with beautiful salmon-colored flesh. The light greenish yellow, oblong melons show an exquisite light netting.

HALE'S BEST. The earliest of all large melons. Even in a season remarkable for its coolness, the melons matured in 68 days after planting. Fruits oval to somewhat elongated. Sweet, luscious, beautiful salmon flesh.

EMERALD GEM. Salmon-pink flesh, thick and sweet. An excellent home garden melon, with dark green skin. Unsurpassed in sweetness. Matures early.

HEARTS OF GOLD. Orange flesh. Medium size, round, netted of handsome appearance and of the sweetest flavor. Matures in 75 days.

HONEY ROCK. Also called Sugar Rock. The medium size fruits have a gray-green skin with heavy coarse netting. The deeply colored salmon flesh is deliciously sweet, finegrained and tender. The fruits are almost round and very heavy.

LEEK

For Soups, etc.

One Ounce Will Sow a Row About 100 Feet Long;
4 Pounds to the Acre

Ready for Use in About 90 Days from Germination

WILSON'S PRIZE-WINNER. Large, long, thick white stems, often over 3 inches in diameter; very mild and sweet. A sure prize-winner. Pkt. 10 cts.; 1 oz. 30 cts.; ¼ lb. \$1.00; 1 lb. \$3.50.

CHOICEST — LETTUCE — CRISPEST

One Ounce Will Produce About 2,500 Plants;
3 Pounds to The Acre

40 to 60 Days from Seeding to Maturity.

All 10 cts. Per Liberal Packet.

½ oz. 15 cts.; 1 oz. 25 cts.; ¼ lb. 75 cts.

CABBAGE (HEADING) SORTS

WILSON'S ALL-HEART. A splendid sort for spring or summer sowing; withstands heat and forms immense heads and extremely solid hearts. The color is a beautiful yellowish green.

WILSON'S SELECTED BIG BOSTON. Large, tender heads; blanches beautifully. Fine for mid-summer and fall planting and for forcing.

WAYAHEAD. Early; sure header. Outer leaves light green, inner ones rich yellow; tender and crisp.

MAY KING. Early; will stand much cold and damp; yellowish green, tinged bronze.

NEW YORK OR WONDERFUL (Dark Iceberg). Also called California Simpson. Immense heads; very solid; heart blanches beautifully; tender and crisp; fine for summer. Best for New Jersey.

CURLED OR LOOSE-LEAVED SORTS

Heat Resisting. Ready before heading varieties.

GRAND RAPIDS FORCING. Large, tender; fine.

EARLY CURLED SIMPSON. Large, curled yellow-green leaves, crisp and tender.

BLACK-SEEDED SIMPSON. Best of the loose-leaf sorts. Tender; leaves ruffled; yellowish green.

ROMAINE OR COS LETTUCE

WHITE PARIS SELF-FOLDING. Best of all Cos sorts. Long, spoon-shaped leaves which if tied up will blanch nearly snow-white. Crisp and tender. Set the young plants 6 inches apart in the rows. ½ oz. 15 cts.; 1 oz. 25 cts.; ¼ lb. 75



Wilson's All-Heart Lettuce

Please Note: Onion Sets May Be Planted Early

MUSTARD

VERY LIKE SPINACH

5 cts. Per Liberal Pkt.

One Ounce to 100 feet of Row; 4 lbs. to the Acre
Matures in About 30 Days

GIANT SOUTHERN CURLED. Enormous leaves.
Long standing. 1 oz. 15 cts.; ¼ lb. 40 cts.; 1 lb. \$1.25.

SPINACH MUSTARD OR TENDERGREEN

A mild Mustard with a delicious Spinach flavor.
Ready for cutting three to four weeks after planting.
The foliage may be used when small or when fully matured. Cook same as Spinach.

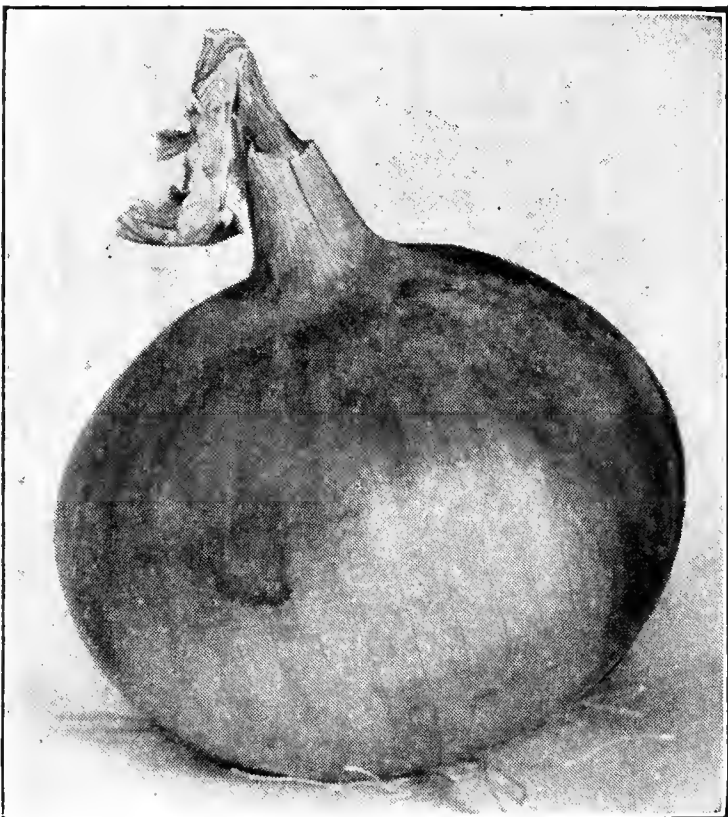
Pkt. 10 cts.; 1 oz. 15 cts.; 4 ozs. 30 cts.; ½ lb. 45 cts.

ONIONS

WILSON'S CHOICEST SORTS

All 10 cts. Per Liberal Packet.

One Ounce Will Sow a Row About 150 Feet Long;
4 to 5 lbs. to an Acre



White Globe Onion

PRIZETAKER. Yellowish brown skin; white flesh;
large size; heavy yielder. ½ oz. 20 cts.; 1 oz.
35 cts. ¼ lb. \$1.25.

AILS CRAIG. Very large exhibition sort. Skin
dark straw color; flesh pure white, mild and
sweet. ½ oz. 20 cts.; 1 oz. 40 cts.; ¼ lb. \$1.25.

RED GLOBE SOUTHPORT. Fine, globe-shaped
Onion; medium size; mild flavor; good keeper.
½ oz. 20 cts.; 1 oz. 35 cts.; ¼ lb. \$1.25.

WHITE GLOBE SOUTHPORT. Clear white bulbs
of perfect globe shape. Fine-grained mild flesh.
½ oz. 20 cts.; 1 oz. 40 cts.; ¼ lb. \$1.35.

YELLOW GLOBE SOUTHPORT. Same as the Red
Globe, except in color of outer skin. ½ oz. 20
cts.; 1 oz. 35 cts.; ¼ lb. \$1.25.

SILVERSKIN or WHITE PORTUGAL. Used largely
when young in salads and for pickles. ½ oz. 20
cts.; 1 oz. 35 cts.; ¼ lb. \$1.25.

LARGE RED WETHERSFIELD. Large, flat bulbs,
pinkish white inside, purplish red outside. Best
for poor dry soils. ½ oz. 20 cts.; 1 oz. 35 cts.;
¼ lb. \$1.25.

YELLOW DANVERS MOUNTAIN. Main-crop; good
size; keeps well, ½ oz. 20 cts.; 1 oz. 35 cts.; ¼
lb. \$1.25.

SOLID ONION SETS

Add 10 cts. per lb. if wanted by mail. Prices sub-
ject to change as season advances. One quart to
50 feet of row; 10 bus. to acre.

WHITE. These sets were grown from choice White
Silverskin or Portugal Onion seed.

YELLOW JAPANESE. Yellow-skinned, white-
fleshed; mild. Will keep all winter.

Prices of Either Sort: ½ lb. 20 cts.; 1 lb. 35 cts.;
5 lbs. \$1.50

OKRA

FOR SOUPS AND STEWS

Pkt. 5 cts.; ½ oz. 10 cts.; 1 oz. 15 cts.; ¼ lb. 35 cts.;
1 lb. \$1.00.

Four Ounces to 100 Feet of Row; 20 lbs. to Acre
Sixty Days from Planting to Maturity

WHITE VELVET. Very productive; early.

PERKINS' MAMMOTH LONG-POD. Large, slender,
deep green pods.

OYSTER PLANT

See Salsify, page 24.

PARSLEY

ESSENTIAL IN EVERY GARDEN

Pkt. 10 cts.; 1 oz. 20 cts.; ¼ lb. 50 cts.; 1 lb. \$1.50
1 oz. Will Sow a Row 100 feet long; 8 lbs. to Acre
Ready for Table About 70 Days from Time
of sowing.

WILSON'S JERSEY GREEN. Handsome deep green
finely curled moss-like leaves. Best of all.

HAMBURG, or TURNIP-ROOTED. Much esteemed
for flavoring soups, stews, etc.

PLAIN or ITALIAN. Very hardy; not curled.

PARSNIPS

One Ounce Will Sow a Row About 100 Feet Long;
8 lbs. to an Acre. Mature in About 80 Days.

WILSON'S HOLLOW CROWN. Large, heavy shoul-
dered roots; white skin, tender, fine-grained
flesh. Pkt. 5 cts.; ½ oz. 10 cts.; 1 oz. 15 cts.;
¼ lb. 40 cts.; 1 lb. \$1.25.

PEPPERS

All 10 cts. Per Pkt.; 1 oz. 60 cts.

One Ounce Will Produce About 1,000 Plants
Ready for the Table in 100 to 120 Days

BULL NOSE HOT. Bright red; hot. Large regular
shape.

CALIFORNIA WONDER. Immense scarlet fruits
sometimes 6 inches deep and 6 inches across. Ex-
ceptionally sweet. Ideal for stuffing.

RUBY GIANT (World Beater). Large fruits. Flesh
solid, sweet and mild. Ruby scarlet when ripe.

NEAPOLITAN. A large mild bright red sort, very
early and exceedingly productive.

SUNNYBROOK CHEESE. A tomato-shaped pepper
averaging 3 inches in diameter and 2 inches deep.
The flesh is thick, solid, mild and sweet.

PUMPKINS

Pkt. 10 cts.; 1 oz. 20 cts.; ¼ lb. 50 cts.; 1 lb. \$1.50.

One Ounce Will Plant About 30 Hills.

Ready for the Table in 75 to 120 Days.

LARGE CHEESE, or PIE. Yellowish brown skin;
deep yellow, fine grained flesh.

**SUGAR, or NEW ENGLAND PIE (also called Win-
ter Luxury).** Orange fruits, yellow, tender flesh.
Fine for pies.

MAMMOTH KING or JUMBO. Produces immense
Pumpkins, sometimes weighing 250 pounds. Deep
orange skin; light yellow flesh, tender and fine.
Pkt. 10 cts.; 1 oz. 25 cts.; ¼ lb. 75 cts.

CONNECTICUT FIELD. Very productive. Deep
yellow, fine grained flesh; orange colored skin.
Fine for feeding cattle and excellent for pies.

TENNESSEE SWEET POTATO. Bell shape; medi-
um size, thick flesh, skin creamy white, fine
grained, sweet, delicious. Very fine for pies.

SORREL

For Soups and Salads

LARGE LEAVED. The largest leaved and best
variety. Pkt. 10 cts.; 1 oz. 25 cts.; ¼ lb. 75 cts.;
1 lb. \$2.50.

Try Black Zucchini Vegetable Marrow This Season

★ INDICATES OUTSTANDING 1939 AND RECENT INTRODUCTIONS

WILSON'S PEAS

2 lbs. Will Sow a Row About 100 Feet Long;
1½ to 2 Bushels to Acre.

Ready for Picking 42 to 70 Days from Germination
We Supply Liberal Packets of Peas at 10 cts. Each



Gradus Pea

WILSON'S PEDIGREE EXTRA EARLY. (Smooth seed). Best of all. Height 2½ feet. Ripens in about 44 days. 1 lb. 35 cts.; 2 lbs. 65 cts.; 5 lbs. \$1.50.

AMEER (Claudit). (Smooth seed.) Height 3 feet. An extra early Pea of excellent quality. Also called Mammoth Alaska. The peas ripen uniformly, the pods are long, dark green, sweet, tender and delicious. 1 lb. 35 cts.; 2 lbs. 65 cts.; 5 lbs. \$1.50.

NOTT'S EXCELSIOR. Height 12 to 15 inches. Early; large pods; a favorite with home gardeners. 1 lb. 40 cts.; 2 lbs. 75 cts.; 5 lbs. \$1.75.

GRADUS, or PROSPERITY. Height 3½ feet. Largest, earliest and sweetest wrinkled pea. 1 lb. 40 cts.; 2 lbs. 75 cts.; 5 lbs. \$1.75.

WILSON'S HUNDREDFOLD. The vines are about 16 inches in height, sturdy, dark green and very productive. The pods are dark green, about 4 inches long, broad and pointed and usually contain 8 or 9 large, dark green peas of excellent quality. 1 lb. 40 cts.; 2 lbs. 75 cts.; 5 lbs. \$1.75.

LITTLE MARVEL. Very large pods; great yielder. Only 15 inches high. 1 lb. 40 cts.; 2 lbs. 75 cts.; 5 lbs. \$1.75.

LAXTONIAN (Dwarf Gradus or Blue Bantam). Height 1½ feet. Immense pods, and large peas of finest flavor. Very early. 1 lb. 40 cts.; 2 lbs. 75 cts.; 5 lbs. \$1.75.

CHAMPION OF ENGLAND. A well-known standard late crop; large pods and peas. Height 5 feet. 1 lb. 40 cts.; 2 lbs. 75 cts.; 5 lbs. \$1.75.

TELEPHONE. Standard late-crop sort; immense pods and peas. Height 4 feet. 1 lb. 40 cts.; 2 lbs. 75 cts.; 5 lbs. \$1.75.

RADISHES

Our Seed Is from Transplanted Roots

Liberal Pkt. 10 Cts.; 1 oz. 20 cts.; ¼ lb. 40 cts.;
1 lb. \$1.00.

One Ounce Will Sow a Row About 50 Feet Long;
6 lbs. to an Acre. Ready in 20 to 70 Days

WILSON'S 20-DAY, or ROUND SCARLET, EARLY. White, crisp, tender; rapid grower.

ROUND SCARLET WHITE TIPPED, EARLY. For frames or outdoors.

SCARLET GLOBE SHAPED, EARLY. For forcing or for outdoor planting; crisp and tender.

FRENCH BREAKFAST. Olive-shaped; scarlet, white tip; quick grower; very fine.

ICICLE. Long, white, crisp and tender. Fine forcer.

LONG SCARLET. Very brittle and sweet; matures in about 3 weeks. Splendid sort.

WHITE STRASBURG SUMMER. Very large; cylindrical.

WINTER RADISHES

CHINA ROSE, or SCARLET CHINA. Roots about six inches long. Skin smooth and of a bright rose color. Flesh firm and crisp.

ROUND BLACK SPANISH. Roots round, sometimes top-shaped; good keeper.

SALSIFY OR VEGETABLE OYSTER

A SPLENDID OYSTER SUBSTITUTE

One Ounce Will Sow a Row About 50 Feet Long
Ready for Table in 100 Days After Sowing

SANDWICH ISLAND. Large, white, smooth tapering roots. Pkt. 10 cts.; 1 oz. 40 cts.; ¼ lb. \$1.35.

SPINACH

The Broom of the Stomach

Pkt. 5 cts.; 1 oz. 15 cts.; ¼ lb. 25 cts.; 1 lb. 75 cts

One Ounce Will Sow a Row About 50 Feet;
10 to 12 Pounds to the Acre.

Ready for Use in 40 to 60 Days

KING OF DENMARK (also called Emerald Standing, etc.). This variety is slow to go to seed. It makes very quick low growth, producing dark green leaves of large size and very much crumpled. The quality is excellent.

PERPETUAL. See Swiss Chard, page 18.

VICTORIA. Broad, dark green leaves of fine quality. A great heat-resister.

VIROFLAY, Thick Leaved. Very large, thick, dark green leaves; fine.

LONG SEASON (Triumph). Remains long in cutting condition. Dark green leaves. Second early.

SAVOY, or BLOOMSDALE LONG STANDING. Quick growing; fine for fall sowing; crumpled leaves.

NEW ZEALAND. Grows well in hot weather. Soak seed before sowing.

SQUASH

One Ounce Will Sow About 20 to 40 Hills;
4 Pounds to the Acre

SUMMER VARIETIES, BUSH

All 10 cts. Per Liberal Pkt.; ½ oz. 15 cts.; 1 oz. 25 cts.; ¼ lb. 50 cts.; 1 lb. \$1.50

Ready in 40 to 60 Days

YELLOW GIANT SUMMER CROOKNECK. Thick, yellow, dry flesh, of fine quality.

YELLOW SUMMER STRAIGHTNECK. Same as Giant Yellow Crookneck except the neck which is almost straight.

WHITE SCALLOPED. (Patty Pan). Early; cream-white fruits.

YELLOW SCALLOPED (Patty Pan) Golden Custard. Golden yellow flesh; fine quality; large.

BLACK ZUCCHINI ITALIAN VEGETABLE MARROW. Improved. The color is a very dark green, almost black, no striping or mottling. Flesh greenish white and of fine flavor.

WINTER SORTS, RUNNING

Ready in About 100 Days

DELICATA. See Tennessee Sweet Potato Pumpkin.
HUBBARD, CHICAGO WARTED. A reliable, old-time winter variety; large.

★ **NEW KITCHENETTE (Hubbard).** The smallest Hubbard; named because the fruits weigh only 5 pounds. Keeps as well as regular Hubbard and is of the same fine quality.

BOSTON MARROW. A productive Fall and Winter variety, oval, of fine flavor. Fruits when ripe bright orange. Flesh salmon, fine grained. Best for pies.

ENGLISH VEGETABLE MARROW. Productive and delicious. Splendid for preserves.

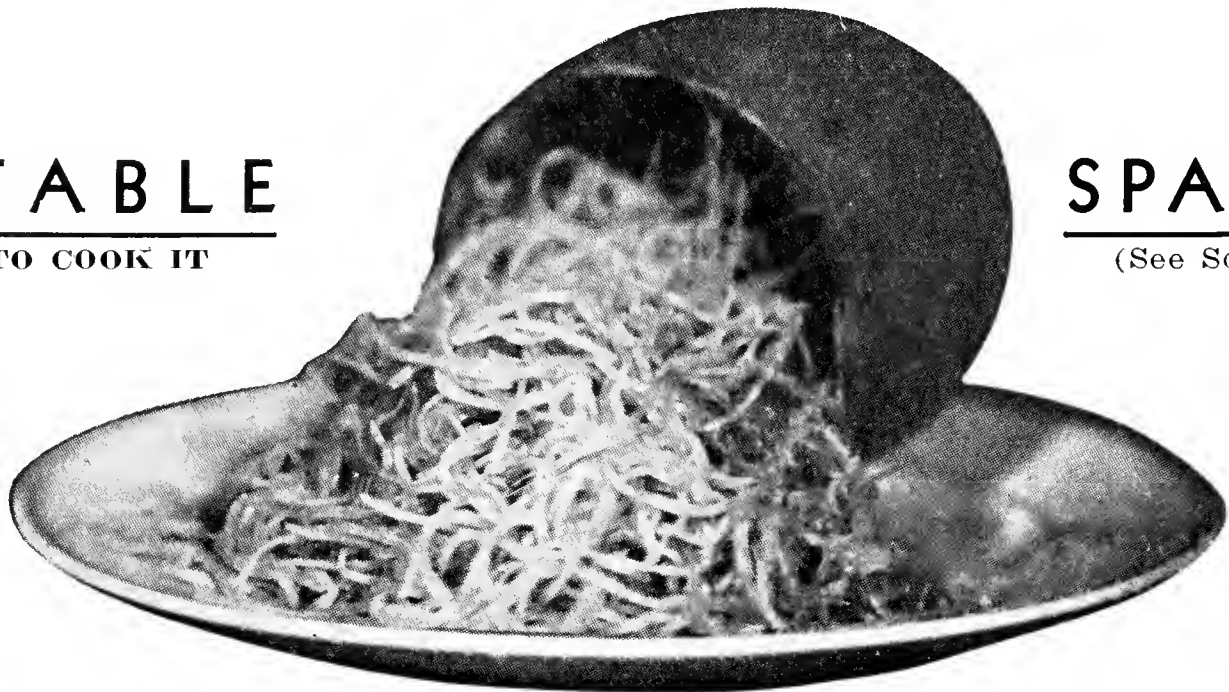
BANANA. Fruit 18 to 24 inches long and about 7 inches in diameter. Skin gray-blue. Flesh fine grained, deep yellow, dry, sweet. Keeps well.

★ **VEGETABLE SPAGHETTI.** The plant is vigorous and sets fruit like squash. These are white skinned about eight inches long and four inches in diameter. An experienced cook says: "Pick a well-ripened squash and cook it whole without cutting or skinning, for twenty minutes in boiling water. Take it out of the pot, cut open and you will find a mass of spaghetti, which is very tasty when seasoned." It is a fine keeper. (See illustration, Page 24).

Consult Us About Your Gardening Problems

VEGETABLE

NOTE HOW TO COOK IT



SPAGHETTI

(See Squash, Page 23)

TOMATOES FOR VITAMINS

All 10 cts. Per Liberal Packet Except Stirling Castle
One Ounce Will Produce About 1,000 Plants
Ready for Table 90 to 120 Days from Planting

MARGLOBE. Almost immune from rust and wilt. Of fine appearance, great productiveness, and superb table quality. Bears large, scarlet, globe-shaped fruit in great abundance, ripening well up to the stem. $\frac{1}{2}$ oz. 20 cts.; 1 oz. 35 cts.

WILSON'S VERIBEST. Bright scarlet, globe-shaped fruits. Firm flesh, free from acidity; vigorous, productive. $\frac{1}{2}$ oz. 25 cts.; 1 oz. 40 cts.; $\frac{1}{4}$ lb. \$1.25.

GREATER BALTIMORE. Brilliant red fruits of medium size. Ripens in clusters. The best main crop sort. $\frac{1}{2}$ oz. 20 cts.; 1 oz. 35 cts.; $\frac{1}{4}$ lb. \$1.00.

PONDEROSA IMPROVED. Enormous purplish pink solid fruits free from acidity. Very productive. $\frac{1}{2}$ oz. 25 cts.; 1 oz. 50 cts.; $\frac{1}{4}$ lb. \$1.85.

PRITCHARD OR SCARLET TOPPER. Large, round, smooth solid fruits of intense scarlet. Very productive and extremely free from disease. $\frac{1}{2}$ oz. 25 cts.; 1 oz. 45 cts.; $\frac{1}{4}$ lb. \$1.25.

GOLDEN QUEEN. Bears rich golden yellow fruits of large size free from acid. $\frac{1}{2}$ oz. 30 cts.; 1 oz. 50 cts.; $\frac{1}{4}$ lb. \$1.75.

OXHEART. This variety is popular because of its distinctive appearance, large size, and fine table qualities. Heart shaped, deep pink, firm, sweet flesh of pleasing flavor. $\frac{1}{2}$ oz. 25 cts.; 1 oz. 45 cts.; $\frac{1}{4}$ lb. \$1.50.

RUTGERS. Makes a big, vigorous plant on which large, globular, deep red fruits are borne in quantity. Resistant to disease and valuable on poor land. $\frac{1}{2}$ oz. 25 cts.; 1 oz. 45 cts.; $\frac{1}{4}$ lb. \$1.50.

JOHN BAER. Firm bright scarlet globular fruits. $\frac{1}{2}$ oz. 25 cts.; 1 oz. 40 cts.; $\frac{1}{4}$ lb. \$1.25.

CHALK'S EARLY JEWEL. Extra early; bright red fruit, smooth and solid. $\frac{1}{2}$ oz. 20 cts. 1 oz. 35 cts.; $\frac{1}{4}$ lb. \$1.25.

STONE IMPROVED. Fruits large, light red, very solid. $\frac{1}{2}$ oz. 20 cts.; 1 oz. 30 cts.; $\frac{1}{4}$ lb. \$1.00.

STIRLING CASTLE. (For forcing under glass). Rich scarlet, medium size, solid, delicate flesh. Pkt. 25 cts.; $\frac{1}{4}$ oz. \$1.00; $\frac{1}{2}$ oz. \$1.75; 1 oz. \$3.00.

SMALL-FRUITED TOMATOES

Red Cherry, Red Plum; Yellow Plum. Esteemed for preserves, etc. Pkt. 10 cts.; $\frac{1}{2}$ oz. 35 cts. 1 oz. 65 cts.

EXPERTS AGREE!

Fertilize your lawn at least twice each year. Early spring and fall are the best times. Use Wilson's 8-6-5 Fertilizer for details of which see pages 30 and 31.

TURNIPS

For Roots and Tops

Pkt. 5 cts.; $\frac{1}{2}$ oz. 10 cts.; 1 oz. 15 cts. $\frac{1}{4}$ lb. 35 cts.
One Ounce Will Sow a Row About 100 Feet Long;
3 Pounds to an Acre

Ready to Use in 50 to 90 Days

If Turnips are strong, slice and soak them in water over night.

MILAN, WHITE. Very early; flat smooth; white; tender and sweet; fine.

MILAN, PURPLE-TOP. Similar to above but with purple top.

GOLDEN BALL. Yellow flesh; medium size.

PURPLE-TOP WHITE GLOBE. Pure white flesh, fine for spring, summer or autumn planting.

SNOWBALL. Pure white; quick grower.

YELLOW STONE. Round; yellow flesh. Very fine keeper.

WILSON'S IMPROVED PURPLE-TOP RUTABAGA. Uniform size, shape and quality; for table use.

JAPANESE FOLIAGE, or SHOGGIN. An excellent dual purpose variety, with white Turnips, 2 to 5 inches in diameter and an abundance of greens. The greens are ready for use in 25 to 28 days.

WATERMELONS

They Melt in Your Mouth

Liberal Pkt. 5 cts.; 1 oz. 20 cts.; $\frac{1}{4}$ lb. 60 cts.;
1 lb. \$2.00
One Ounce Will Sow About 30 Hills; 4 lbs. to Acre.
Ready for the Table in 75 to 90 Days

COLE'S EARLY. Extra early; fine quality; red flesh.

MONTE CRISTO, or KLECKLEY SWEETS. Large, oval; flesh bright red, tender and sugary.

TOM WATSON. A large, oblong melon; flesh red; delicious flavor.

CITRON. Medium-sized, round; for preserves. Red seed.



USE BOVUNG ON LAWN OR GARDEN!

We recommend Bovung because it is natural cow manure, a fine organic fertilizer containing all the elements necessary to vigorous plant growth. Dehydrated, Bovung is absolutely weed-free, clean, odorless and easy to handle. See pages 30 and 31 for details and prices.

Vegetable Cultural Directions

ASPARAGUS. Sow in April in rows 1 foot apart, in well manured, sandy loam. When the plants are one or two years old, put them into beds 3 to 4 feet apart, from 1½ to 2 feet between the plants in the row. Cover with 2 or 3 inches of soil. A dressing of salt, 8 ounces to the square yard is recommended every spring. Cut off tops in September, and on the approach of winter, cover with manure or straw.

STRING BEANS (Green and Wax). Sow early in May and for succession, 2 weeks until late August. Plant Beans 2 inches deep and 2 inches apart in the row, the rows about 2 feet apart; hoe frequently to the time of blossoming, but only when vines are dry, always drawing the soil toward the rows.

BUSH LIMA BEANS. When frost danger is over and soil has become warm, sow Beans in rich, light loam in rows 2 feet apart, 3 to 4 inches apart in the rows, cover to depth of 1 in., eyes down. Hoe often.

POLE LIMA BEANS. Pole Beans, especially Limas, are very sensitive to cold and wet, and if planted in cold or soggy soil will rot. Set the poles 4 feet apart each way and, when danger of frost is past, plant four or five Beans around each pole 1 inch deep, eyes down. When the young plants come up, thin to three to the pole; hoe and cultivate freely. Top-dress with good fertilizer.

POLE STRING OR SHELL BEANS. After settled warm weather, set poles 6 to 8 feet long in rows 4 feet apart extending north and south, poles being 3 feet apart in the row. Let the poles slant slightly toward the north. Around each pole plant five to eight Beans 1½ to 2 inches deep. When well started thin to four plants.

BEETS AND SWISS CHARD. Sow in spring, when the apple is in bloom about 1 inch deep in rows 1 foot apart. When plants have made three or four leaves, thin to 6 inches apart. Cultivate thoroughly. For succession, sow every two weeks until Aug. 10.

BROCCOLI AND CAULIFLOWER. Sow in hotbeds early in March; when plants are sufficiently large, transplant to coldframes and harden by gradual exposure. Set out in the open ground as soon as the weather will permit, in rows 3 feet apart and 2 feet apart in rows. Give young plants a good watering, when set out, with a 100-to-1 solution of Nitrate of Soda, and again ten days or two weeks later. Cauliflower must be kept growing without check and must be watered copiously.

BRUSSELS SPROUTS, COLLARDS AND CABBAGE. For early crop sow in hotbeds in February or March ½ in. deep and prick out into coldframes to harden. When danger of frost is over plant in the open in rows 2½ feet apart and 2 feet apart in the row. For second early crop sow in April and for late crop in June Sow Chinese Cabbage in August—not before.

CARROT. For early crops sow ½ inch deep soon as the ground can be worked and for general crop in May. For succession sow at intervals to July. Rows 16 to 18 inches apart. Cover seed lightly and firm well in the soil. When plants are large enough to handle, thin to 3 or 4 inches apart in row. Hoe often.

CHICORY. Sow early in spring, in rows about 2 feet apart, in light, rich soil. When plants are large enough thin out to 6 inches apart.

CORN SALAD. Sow in rows 1 foot apart in early spring and in August, September and October. If sown in October the plants require protection.

CELERY. Sow early in spring in well prepared soil, in rows covering seed about four times its size and firming well into the soil with a board. See that soil is kept moist till seeds germinate. In July, set the plants 6 inches apart in rows 3 to 4 feet apart. Draw the earth up to them as they grow, but be careful not to allow any to get into the hearts.

SWEET CORN. As soon as the soil is warm, plant about 2 inches deep in hills 3 to 4 feet apart each way, about six seeds to the hill in well drained soil. When the plants come up, thin out and allow the strongest three to remain. Hoe often. For succession, plant every ten days to end of July.

CUCUMBER. Sow in May in hills 4 feet apart each way. Put in ten seeds to the hill and cover about 1 inch deep. When plants have 4 leaves thin out and leave strongest 4. For succession plant up to July.

CRESS. Sow in spring, as soon as the ground can be worked, in shallow drills about 1 foot apart, covering the seed lightly. When the young plants are well up, thin to 4 inches apart in the row. For succession sow every ten days.

DANDELION AND ENDIVE. For early use, sow in April for late use in June or July. Sow in drills covering lightly. When plants are about 3 inches high thin to 1 foot apart in the rows; cultivate well, and when nearly full grown, and when plants are dry, blanch by tying the leaves together.

EGGPLANT AND PEPPER. Sow seeds in hotbed or greenhouse early in March. Put young plants into 2½-inch pots. In May or June take out of the pots and plant in the open ground, in rich soil, in rows 3 feet apart and 2 to 3 feet apart in row. Hoe frequently and mulch during warm weather. Use a commercial fertilizer strong in potash.

KOHLRABI. Prepare the ground as for cabbage. Sow early in May, and for succession up to July, in rows 1½ ft. apart. Thin out the plants to 12 inches in the row. To preserve over winter treat as turnips.

KALE. Sow in April or May, and for winter use in August or September, and cultivate the same as cabbage. Cover seed ½ inch.

LEEK. Sow early in April and mid-summer, in rows 1 inch deep, 1 foot apart, and thin 4 to 6 inches in the rows; cultivate often. Draw earth up to them as they grow to insure white and tender Leeks.

LETTUCE. For Spring outdoor crop sow early in March about ¼ inch deep, in boxes or hotbeds. Transplant into flats or coldframes to harden off. As soon as the ground can be worked, set out in rows, 1 foot apart, allowing from 8 to 12 inches between plants; cultivate frequently. For succession sow in the open ground every two weeks, from April to August. Soil well enriched is necessary, as lettuce must be grown without check. Use a 100 to 1 solution Nitrate of Soda, occasionally.

MUSK MELON AND WATER MELON. Early in May, when the ground is warm and dry, make hills 4 to 5 feet apart each way and sow 8 to 10 seeds in a hill, covering about 1 inch. When the fourth leaf appears, thin to 3 or 4 plants in a hill. Cultivate frequently. Spray early and often with bordeaux or arsenate of lead. Hills for W. Melon 8 feet apart.

ONION. Sow ½ inch deep early in the spring. When young plants come up, thin to 2 inches apart in the row. Hoe and cultivate often, but avoid too deep cultivation and be careful not to draw the soil around the growing bulbs. For large onions, sow seed in coldframes in February and transplant to open ground. For early green onions, sow seed of Silverskin in Aug. and protect plants during winter.

OKRA. Sow seed as soon as ground is warm, in drills 3 feet apart and 1 inch deep. When the plants come up, thin to about 1½ feet apart in the drills. Requires rich, moist soil and frequent cultivation.

OYSTER PLANT (Salsify). Sow early in spring, in rows 15 inches apart and 1 inch deep; thin out to 6 inches apart in the rows; cultivate same as carrots.

PARSLEY. Sow early in April in rows 1 foot apart and ½ inch deep, and for a succession up to autumn. When plants come up, thin to 4 to 6 inches apart in the row. In dry weater water plentifully.

PARSNIP. Sow in spring ½ inch deep in good, deep soil, as soon as the ground can be worked; make rows 18 inches apart. When the plants are well up, thin to 6 inches apart in the rows. Roll after sowing.

PEAS. Peas require warm, light soil, well fertilized and slightly acid. Soon as ground can be worked, open rows 3 or 4 inches deep, 2 to 3 feet apart, into which drop the Peas and cover them. Cultivate same as beans. Smooth varieties are best for early planting. The wrinkled kinds are more tender, and should be sown later.

PUMPKIN. Sow early in May; make hills 8 to 10 feet apart each way; 4 to 6 seeds in the hill. When plants come up thin to two or three. Pumpkin seed can be sown with corn in every fourth hill. Cultivate frequently and keep the soil rich.

RADISH. Sow as early in spring as the ground can be worked 1 inch deep, in rows 1 foot apart. Sow to avoid thinning. For succession sow every two weeks. Sow winter varieties in July and August. Succeed best in soil slightly acid.

RHUBARB. Requires very rich soil. Bovung is excellent. Roots may be planted in spring or fall and should be set at least 3 feet apart. Cover crowns with 2 inches of soil.

SQUASH. Sow in hills, when the apple is in bloom, about 4 feet apart each way for the summer sorts, and 8 to 12 feet for the winter varieties, eight to ten seeds to the hill. When the plants come up and when danger of loss by insects is past, thin to three or four plants to the hill.

SPINACH AND MUSTARD. For spring and summer use, sow in April in rows 1 foot apart, and 1 inch deep, and for succession sow every two weeks up to August. For winter use, sow in September and cover with straw or other protection on the approach of cold weather. ½ inch deep.

SORREL. Sow seed in any good garden soil, in shallow drills a foot apart. Thin plants to 6 to 8 inches apart and remove seed stalks as soon as they appear; cut about 2 months after planting.

TOMATO. Sow in hotbeds or under glass in March or April, and when the young plants have made three or four leaves, transplant into shallow boxes or coldframes, setting them 4 to 5 inches apart. When danger of frost is over, set out in the open. Seed can also be sown in the open ground.

TURNIP AND RUTABAGA. Sow seed in the open ground in April, ½ inch deep, in rows a foot apart, and thin to 4 to 6 inches in the rows. Be sure to have the soil rich and freshly stirred. Thin early and keep free from weeds. For fall and winter use, sow in July, August and September.

Sow Rutabagas thinly in July in rows 2 feet apart. Cover firmly with ½ inch of soil. Thin to stand 6 inches apart in the row. Cultivate constantly.

WILSON'S GLORIOUS GLADIOLUS

ALL FIRST SIZE BULBS At Greatly Reduced Prices

(See end of list.)

E — Early M — Midseason L — Late
R — indicates Ruffled Petals

NOTE CAREFULLY — We procure our bulbs from the largest and most reliable growers in America. All are strictly young stock properly cured and treated against disease.

COMPARE OUR PRICES BEFORE PURCHASING ELSEWHERE

CULTURE — Any good garden soil, thoroughly prepared and manured, is suitable. Bone Meal or cow manure (Bovung) are particularly good. If the soil is stiff, add sand or sifted ashes.

Gladioli do best in full sun. Plant in rows, 6 inches apart in the row and 4 inches deep, rows 12 inches apart. Continue to plant every 2 weeks till mid July for a succession. Frequent cultivation is advisable. Water copiously. Take up bulbs in fall before ground begins to freeze and put in a warm, sunny place, for a few days, to dry. Cut off stems a few inches above bulb, tie in bunches and hang in a dry cool place or store in paper bags.

Cut spikes as soon as the first one or two flowers are open. The remainder will open in the house.

16 LARGE-FLOWERING SORTS

- | | |
|---|---|
| ACHILLES. E. Orange Red. | PICARDY. L. Clear Light Salmon.
Doz. 60 cts; 100, \$4.00. |
| BETTY NUTHALL. L. Coral Pink; Yellow throat. | RED CHARM. M. Velvety Blood Red. |
| CARMINE ROSE. M. Charming Art Shade. | ROSE SPLENDOR. L. Deep Rose Pink. |
| CHARM. M.R. Pure Rose Pink. | RUTH HUNTINGTON. E.R. Clear Laven-
der. |
| GRAND GLORY. E.R. Golden Orange. | SPANGLED BEAUTY. M. Tyrian Rose. |
| KUNDERDII GLORY. E.R. Lovely Cream. | SPLENDORRA. E. Deep Wine Red. |
| MRS. O. W. DYNES. E.R. Clear Canary Yellow. | T. A. WESTON. M. Pure Salmon Pink. |
| PANTHEON. E. Glistening White. | VIOLA GEM. M. Lovely Soft Purple. |

All the above same price except Picardy which see.

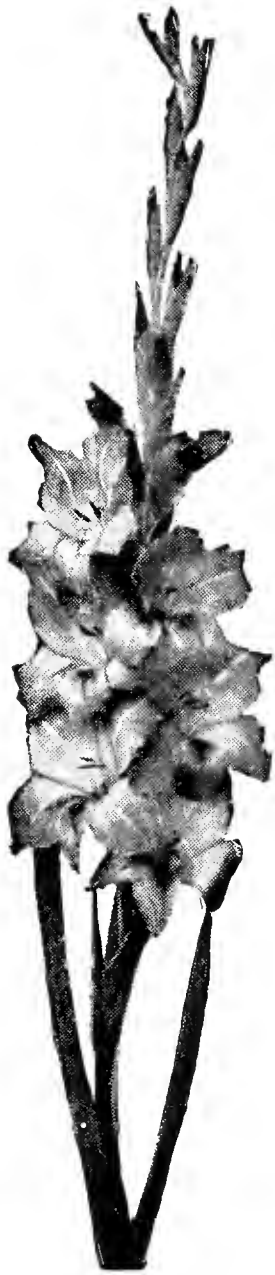
6 for 20 cts. 12 for 35 cts. 25 for 65 cts. 50 for \$1.25 100 for \$2.50

WILSON'S GLORIOUS GLADIOLUS MIXTURE

(From Above Named Sorts)

Most gladioli mixtures are composed of a number of odd varieties thrown together into one container and sold in that way. That's why mixtures are usually a disappointment. Our mixtures are taken from the above named sorts so that the purchaser is absolutely sure of a real mixture.

6 for 20 cts. 12 for 35 cts. 25 for 65 cts. 50 for \$1.25 100 for \$2.50



Gladiolus

MISCELLANEOUS BULBS AND ROOTS

CANNAS LARGE FLOWERING For best results use plenty of well-decayed manure and water freely.

THE PRESIDENT Scarlet; green foliage. 5 feet.

KING HUMBERT Salmon - scarlet. Bronze leaf. 5 feet.

YELLOW KING HUMBERT Yellow lightly spotted red, green foliage. 5 feet.

Plants only. Ready in Mid-May (potgrown).
Each 25 cts.; Dozen, \$2.50

TUBEROSES Excelsior, Dwarf Pearl. Lovely, large, double flowers of thick, wax-like texture borne on graceful, long strong stems. Wonderfully fragrant. 3 for 25 cts.; 12 for 60 cts.; 100 for \$4.00.

DAHLIAS We shall have strong divided roots of a number of the best sorts for cutting. Also plants of the new Unwin Dwarf Hybrids so invaluable for beds and borders. All at the most reasonable prices.

HARDY LILIES It is in the hardy border that Lilies do best, as they get the benefit of the shade of the surrounding plants, which is so necessary for their welfare.

AURATUM (Golden-banded Japan Lily). Large, graceful, fragrant flowers, ivory white, studded with chocolate-crimson spots, and striped golden-yellow. 35 cts. each; \$3.50 per Doz.

REGALE (Regal Lily). One of the most beautiful Garden Lilies. It grows 3 to 5 feet high, and blooms in July. It is perfectly hardy. Large trumpet-shaped, scented flowers ivory white, shaded pink, tinged yellow. 30 cts. each; \$3.00 per Doz.

SPECIOSUM ALBUM Large white flowers with a greenish band running through the centre of each petal. 40 cts. each; \$4.00 per Doz.

SPECIOSUM RUBRUM (Magnificum). Rosy-white, heavily spotted crimson. 35 cts. each; \$3.50 per Doz.



Gaillardia

Hardy Perennial Plants

15 cts. to 25 cts. per Clump

Note: Place your order early so as to be SURE not to be disappointed. Orders placed too late very often cannot be filled. We deliver at the proper time to plant.

VARIETIES MARKED ★ ARE SUITABLE FOR ROCK-GARDENS



Sweet William

ACONITUM (Monkshood). Blue. Fine for shade.

★ **ALYSSUM** *Saxatile Compactum*. Masses of golden yellow flowers in May.

AQUILEGIAS or **COLUMBINES** Beautiful hardy plants, producing their graceful spurred flowers on stems 2 feet or more above the foliage.

★ **ARABIS** *Alpina* (Rock Cress). Forms a dense carpet of pure white flowers in early Spring.

★ **ARMERIA** (Sea Pink). Dense heads of pink flowers on stiff, wiry stems.

★ **ASTER** *Alpinus*. Large, showy, bluish purple flowers in May and June.

ASTERS Hardy in variety.

CAMPANULAS OR **CANTERBURY BELLS**
They like a good, rich soil. Plant in a half shady place.

★ **CAMPANULA** *Carpatia*. Carpathian Harebell. Clear blue flowers on wiry stems from July until October.

CARNATIONS—HARDY BORDER Choice mixed seedlings.

★ **CERASTIUM** *Tomentosum*. (Snow-in-Summer). Pure white flowers and silvery foliage.

CHRYSANTHEMUMS Hardy Garden in variety. Korean Hybrids.

COREOPSIS *Lanceolata grandiflora*. Rich golden-yellow. Valuable for cutting; bloom all summer.

DELPHINIUMS (Hardy Larkspur) Among the most popular subjects in the hardy border; of easiest culture.

★ **DIANTHUS** *Deltoides*. Maiden Pink. Pink flowers all summer.

DIGITALIS (Foxglove) These produce spires of blossoms 3 to 5 feet high. Stately old garden favorites.

ENGLISH DAISY (*Bellis Perennis*). Improved double-flowering, white and pink.

EUPATORIUM *Coelestinum*. (Perennial Ageratum). Blue.

GAILLARDIA (Blanket Flower). Succeeds in any soil in a sunny position. Flowers the entire season. The center of the flower is red-brown, petals marked with rings of crimson and orange.

GEUM In variety.

★ **GYPSOPHILA** *Repens*. White and Pink flowers, July and August.

GYPSOPHILA *Paniculata*. (Perennial Baby's Breath). White.

HEMEROCALLIS In Variety.

HOLLYHOCKS A necessary part of every old-fashioned garden.

★ **IBERIS** *Sempervirens*. Hardy Candytuft. Pure white flowers in June.

★ **IRIS** Dwarf Hybrids in Variety.

IRIS JAPANESE Come into flower middle of June and continue for 3 to 4 weeks. They succeed in almost any soil and position.

LYCHNIS *Chalcedonica* (Jerusalem Cross). Heads of brilliant orange-scarlet in June and July; grows 2 to 3 feet high.

MYOSOTIS (Forget-Me-Not) Useful in a shady spot in the border.

★ **NEPETA** *Mussini*. Violet blue flowers during July and August.

PHLOX Succeed in almost any soil and position; and flower through a long season.

★ **PHLOX** *Subulata* (Moss, Pink). Early spring-flowering, with moss-like evergreen foliage. Excellent for the rockery or for covering graves.

★ **PLUMBAGO** *Larpenatae*. Leadwort. Deep blue flowers, summer and fall.

PYRETHRUM Easy to grow in any good garden soil. Their season of bloom is June and July; 18 to 24 inches.

★ **SAXIFRAGA** *Cordifolia*. Rockfoil. Rose-pink flowers, almost as soon as the frost is out of the ground.

SCABIOSA *Caucasica*. (Perennial Scabiosa). Blue Bonnet.

★ **SEDUM** Stonecrop—in variety.

SHASTA DAISIES OR **WHITE MARGUERITES**
Blooms 3 to 4 inches across, of glistening white. Bloom all summer and fall. 2 feet.

SWEET WILLIAM A well-known hardy perennial.

★ **THYMUS** Thyme in variety

TRITOMA (Red-hot Poker, or Torch Lily) Hardy if given protection. In bloom from August to October, with spikes 3 to 4 feet high, and heads of bloom of a rich orange-scarlet.

★ **VERONICA** *Incanna*. Speedwell. Bright silvery foliage with spikes of amethyst-blue flowers during July and August.

VERONICA *Longifolia Subsessilis* (Japanese Speedwell.) Forms a bushy plant 2 to 3 feet high, with long dense spikes of deep blue flowers from July to September.

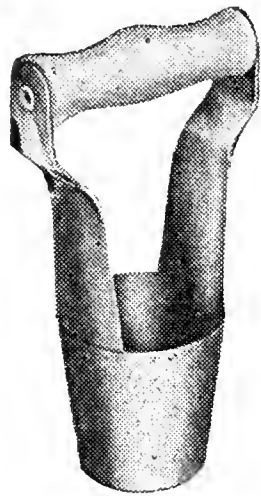
In addition to the above we can supply many other Hardy Perennials and Rock Plants. We solicit your inquiries.

Garden Implements and Supplies

ASPARAGUS KNIVES. Each 50 cts.

ASBESTOS TORCH. For burning tent caterpillars. Each 50 cts.

BENDIX HOSE COUPLING. Red Cap. Snaps on to faucet. Can't come off. Per set60 cts.



BULB AND PLANT SETTER.

Makes a flat bottomed hole. Simply press the tool into the soil and remove it with a twisting motion. Each 60 cts.

CULTIVATORS, HAND. True temper (Norcross type).

3 prong, 4-ft. handle, ea. \$0.85
5 prong, 4-ft. handle, ea. 1.25

CANES, BAMBOO. Natural Color.

	12	25	100
3 feet long, 3/8" thick	\$0.30	\$0.50	\$1.75
4 feet long, 1/4" thick30	.50	1.75
4 feet long, 3/8" thick35	.65	2.50
4 feet long, 1/2" to 5/8" thick ..	.40	.80	3.00
4 feet long, 5/8" to 3/4" thick ..	.60	1.10	4.00
5 feet long, 5/8" to 3/4" thick ..	.65	1.25	4.50
6 feet long, 5/8" to 3/4" thick ..	.80	1.50	5.50
12 feet long, Extension—3 parts	\$1.75 each		

Green Dyed. Pencil Thickness.

1 1/2 feet long	\$0.08	\$0.15	\$0.45
2 1/2 feet long15	.20	.65
3 feet long15	.25	.75
4 feet long20	.35	1.25

See also Handy Plant Holders, Page 29.

CRAB GRASS or DANDELION RAKE. Heavy steel curved head 15 1/2 inches wide with 26 saw teeth. One solid piece bolted to the 15 1/2 foot handle. Will not tear the grass roots. Each\$1.25

DIBBLES. Wood handle, steel tip. each\$0.75

FLOWER POTS. See Pots.

FLOWER POT SAUCERS (Rubber)

Small, 15 cts.; Medium, 25 cts.; Large, 50 cts.

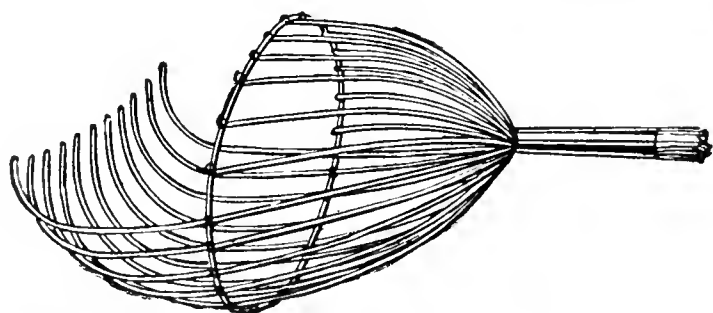


FORKS.

Spading. 4-tine wood, D handle, each\$2.95

4-tine mal., D handle, each 1.50

Hand. Each\$0.30 to \$0.40



FRUIT PICKER. Galvanized; without handle.

Each \$0.50



GLOVES. Eezy Wear. Garden or utility. All leather, for men or women. Pair\$0.75

Kreme Skin. Made from soft lamb skins, specially cream treated; three sizes. Pair ...\$1.00

Cotton, pair\$0.25

GARDEN LINE. Braided. 48 foot lengths. Each\$0.50

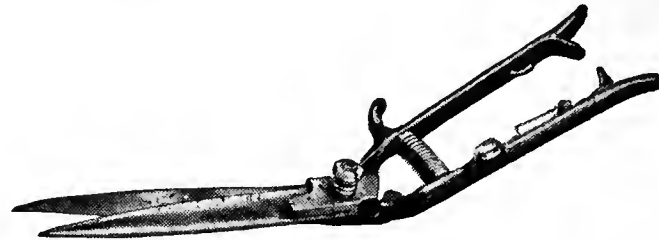
GARDEN LINE REELS. Iron. For 100 feet of line. Each\$1.25

GRAFTING WAX.

1/4 lb., 25 cts.; 1/2 lb., 35 cts.; 1 lb., 60 cts.

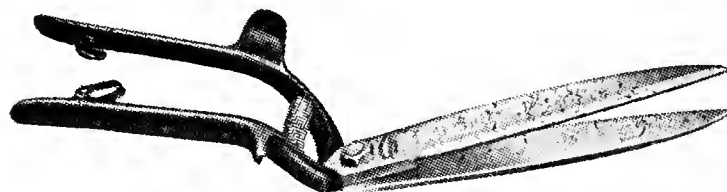
GRASS HOOKS. (Sickles.) Each\$0.50 to \$1.00

GRASS SHEARS



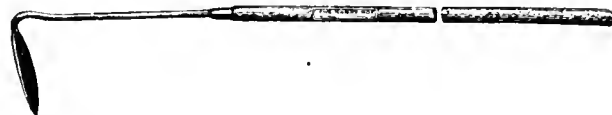
No. 193. Forged steel hollow-ground blades. Full polished with tempered edges. High lift mal-leable iron handles; red enamel finish.

Pair\$1.00



No. 195. Handles and blades forged in one piece of high grade cutlery steel. Blades hollow ground, full polished, keen, tempered cutting edges. Enameled high lift handles. Pair.....\$1.50

LENGTH OVERALL — 4 FEET



THE HANDY HOE. The drop forged carbon steel blade is only 3/4" wide and 4" long and the overall length with a hard wood handle is 4 feet, making it possible to hoe in close quarters without stooping. Each75 cts.

HOES. 5-foot handles.

Draw. Each\$0.85 to \$1.25

Scuffle. Each 1.00 to 1.25

English. Each 1.50 to 2.00

Warren Heart Shape. Each 1.25 to 1.50

HOSE. Pure Rubber Molded. Per foot\$0.15

HOSE NOZZLES. See Nozzles.

JAPANESE BEETLE TRAPS. A neat container with standard thread—fits any mason jar. Price (without Mason jar), Small, 60 cts.; Large, 75 cts.

Beetle Bait.

1/4 Pint Can, 25 cts.; 1/2 Pint, 50 cts.; 1 lb., \$1.25

LABELS. Wooden. Painted.

	Doz.	100	1000
4"	\$0.10	\$0.45	\$ 2.25
5"10	.50	2.75
6"15	.55	3.25
8"30	1.00	8.00
10"35	1.40	11.00
12"40	1.50	13.00
3 1/2" copper wired10	.50	3.25

NOZZLES (SPRAY).

Auto-Pop, with Hose. Each\$1.65

Non-Clog. Each70

Bordeaux. Each90

Vermorel. Each 1.00

NOZZLES (Hose)

Eclipse\$0.50

Boston60

Rain King 1.00

Flaring Rose65

Garden Implements and Supplies (CONTINUED)

OSMO POT



POTS (Osmo Tri-Pots). Made of specially prepared Osmoss (not paper). Will stand for weeks in moist benches or flats without going to pieces. Plant pot and all thus avoiding root shock. Size, 2". 50 for 50c; \$1.00 per 100; \$7.50 per 1000.

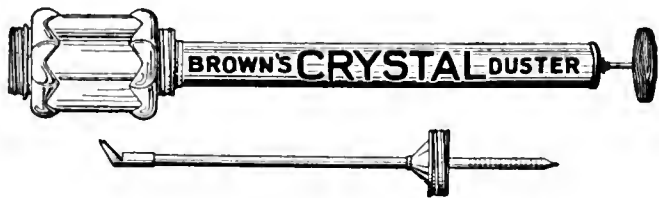
PLANT THE POT AND ALL

Fan-shape spreader nozzle. Continuous discharge. Each\$1.25

POWDER DUSTERS.

Brown's Crystal Duster.

A hand duster with glass jar container. Length overall, 39 inches. Capacity of jar, 1 quart.



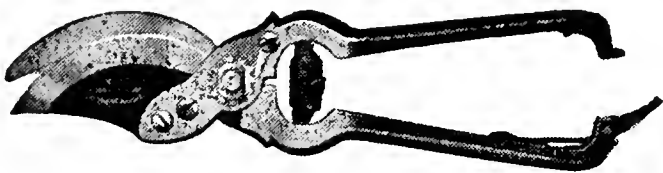
Duster, Brown No. 1. Each60

PLANT HOLDER, HANDY. A new and very useful plant support. It is especially good for Delphiniums, Marigolds, Snapdragons, etc. It snaps together and stays "put." Made in three sizes.

24"	10c	\$1.00
36"	15c	1.25
48"	20c	1.75

PLANT-TIE. Tape. See Page 30.

PRUNERS. Hand, No. 1540. Hardened and tempered steel blade. Each\$1.75



No. 534½. Hardened and tempered steel blade, 20" all steel handle. Each.....\$2.50



Other styles in stock from 85c up.

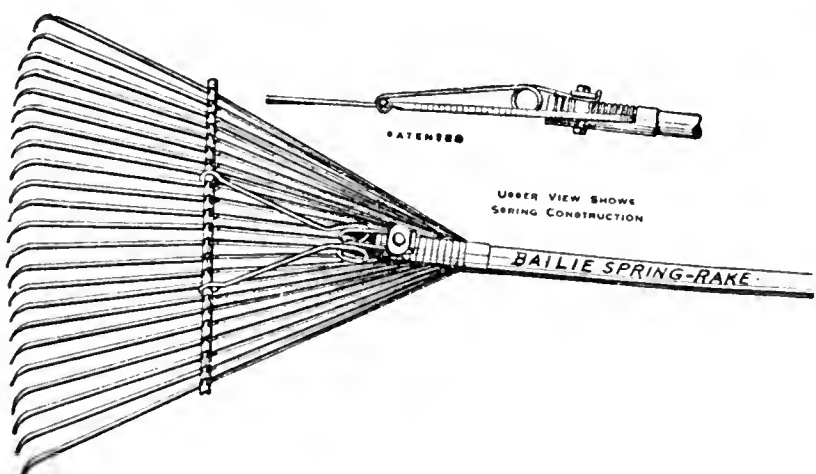
RAKES. Garden, All Steel.

Teeth	12	14	16
Each	\$1.25	\$1.50	\$1.75

Baile Spring-tooth Steel (for cleaning up leaves, etc.) Each\$1.75

Bamboo, Wood Handle

18", reinforced with metal band, each ...	\$0.75
24", each	\$1.00
30", each	\$1.25



See also Crab Grass Rake, Page 28.

RAFFIA. Natural color. For tying plants.

¼ Pound	\$0.15
½ Pound30
1 Pound50

SHEARS, HEDGE. English and American \$2.00 & up

SPADES. Victor. Good Quality. Each\$1.50

SHOVELS. Best steel. Each\$1.50 to \$2.00

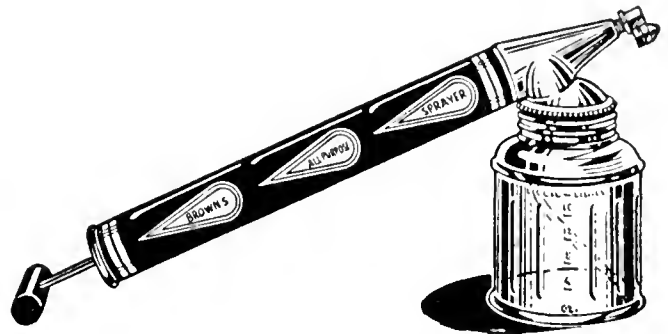
STAKES. See Canes and Plant Holders.

SPRAYERS, Hand.

Brown's Du-Spra. Continuous. Tin pump, glass jar. Capacity one pint. An ideal sprayer for house or garden. Each\$0.50

Brown's No. 16. A one pint single acting sprayer. Tin pump; glass container. Each\$0.40

Brown's 26 B. G. Tin plate pump cylinder; brass cone and jar cap. Durable glass container, capacity 1 quart. Nozzle: angle and straight. Continuous. Each \$1.25



SPRAYERS, Tank or Shoulder

Brown's Open-Hed Auto-Spray.

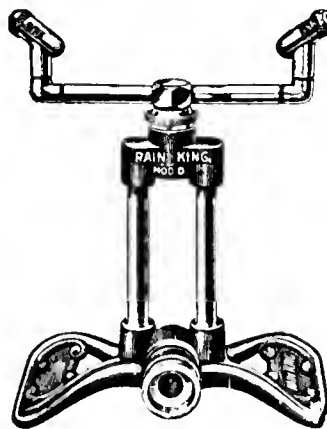
Entirely electrically welded steel tank GUARANTEED 100 lbs. PRESSURE. Pump cylinder seamless brass with all-metal valve; plunger steel with double rubber grip handle. Equipped with high pressure spray hose, automatic shut-off, seamless brass extension, swivel nozzle coupling and Non-Clog nozzle. The tank opening is 5 inches in diameter.



No. 4D —4 gal. capacity	\$7.50
No. 3¾D—3¾ gal. capacity	6.50
No. 3D —3 gal. capacity	6.00

Bucket Pump. Brown's No. 6.

An excellent pump. Made entirely of brass, except malleable iron handle and foot rest. Bronze ball valves. ¾-inch high pressure hose with screen. Non-Clog solid stream nozzle. Ea. \$3.25



SPRINKLERS. For Garden or Lawn.

Rain King Model D. Adjustable to revolving or stationary sprinkling. For large lawns or small strips or corners. Each\$2.25

Rain King Model G. Can be set for fast or slow revolutions. Has one long arm with adjustable nozzle. Will throw spray from 15 to 100 feet on normal pressure. Each\$3.50

Rain King Model H. Can be set to sprinkle with a stationary or revolving spray odd plots, narrow strips and small or large circles. Chromium nozzles. Each\$2.95

Whirling Showers. All brass except iron base. Revolving type. Nozzles adjustable. Each \$1.25

Ace Sprinkler. Adjustable brass nozzles. Enamelled cast iron base and arms. Covers circles 15 to 75 feet in diameter. Each\$1.50

Sunbeam. Adjustable brass baffle in enamelled cast iron base. Fountain spray up to 40 feet

Rubber. Small50 cts.; Large \$1.00

Implements and Supplies (Cont'd)



TREE PRUNER. Tip Top. Twelve feet long, in 3 convenient sections. Tempered steel blade. Can be used as a four or twelve foot pruner. Each\$2.75



TROWELS.

Kingsbury, All Steel Each\$0.15
 Transplanting, 7". Each25
 Brades' English. Each65
 Fern Trowels. Each85
 American Socket. Each 1.00
 English Stainless Steel. Each 1.75

WATERING POTS. Heavy galvanized iron.
 6-quart75 cts. 8-quart85 cts.



WEEDERS, Hand.

Each\$0.15 to \$0.50

PLANT-TIE. NEW. A new tape plant tie that will not injure the tenderest stems. Strong, yet it can be snapped readily after fastening. Put up in convenient 50 foot cards. Used by 200 garden clubs between Maine and Florida. Price per 50 foot card, 10 cts.



The New Root-Forming Chemical

This chemical substance stimulates the growth of roots on cuttings. Many plants formerly impossible to propagate from cuttings may now be rooted with the aid of HORMODIN.

HORMODIN comes in liquid form and is applied as a dilute water solution.

20 unit package, enough for 500 cuttings..\$1.00
 60 unit package 2.00
 240 unit package7.00

ROOTONE
 PATENTS PENDING

A hormone powder easy to use. Anyone can apply safely, no skill is needed to apply Rootone, no measurements, no vials, no elaborate charts to follow, just dip and plant. Rootone also kills seed fungi and stops damping off. Price, 2 oz. jar, enough to treat 3,000 cuttings, \$1.00. 1 lb. jar will treat up to 30,000 cuttings, \$5.00. Write for leaflet.

SPECIFY WILSON'S

for

A BIGGER RETURN



SEE OPPOSITE PAGE FOR PRICES AND ADDITIONAL FERTILIZERS

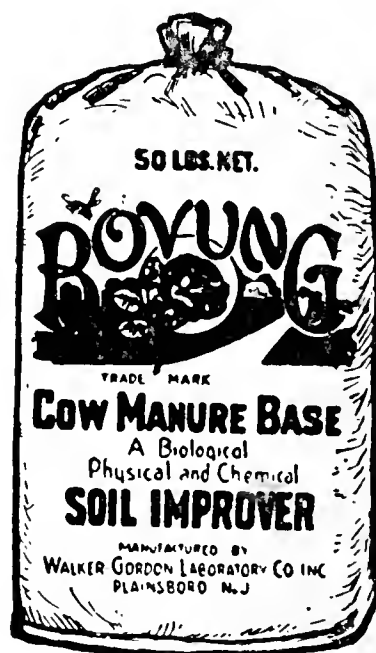
WILSON'S 8-6-5 FERTILIZER

Based on the findings of years of experiment on lawns growing on New Jersey soils, Wilson's 8-6-5 Fertilizer is a carefully compounded balanced lawn food. Whether incorporated with the soil when new lawns are planted or used to top dress the old it is equally productive. Formulated so that its various nourishing elements are released as the grass plants need them, this fine fertilizer is of lasting value to every lawn. Fertilize early this year so you will get a thick healthy lawn before mid-summer and you'll be amazed at the manner in which crab-grass and other objectionable weeds are discouraged.

WILSON'S 5-8-5 FERTILIZER

Wilson's 5-8-5 Fertilizer provides ALL the elements of plant food for vegetables, fruits and flowers. Quick acting, safe, odorless and reliable, it is certain to improve the growth and beauty of flowers and the yield of fruit trees and vegetables.

If you expect to get full value from vegetables and flowers fertilize frequently with Wilson's 8-6-5 Fertilizer.



BOVUNG

Bovung is pure, dehydrated cow manure from protein fed cows. It adds to the soil permanently acting as a biological, physical and chemical soil improver as well as a quickly available stimulant for flowers, fruits and lawns.

A product of the famous Walker-Gordon Laboratories.

FOR YOUR RHODODENDRONS

RHODONO
 THE ALUMINUM SULPHATE COMPOUND

This product has been especially prepared for use in the treatment of Rhododendrons, Azaleas, Kalmias, Andromedas, etc., to bring the soil into a condition approaching that existing in the native habitat of all these valuable plants. Used extensively by Parks, Arboretums, etc.

Wilson's "Quality" Fertilizers

Delivered Free Within 20 Miles of Store	5 Lbs.	10 Lbs.	25 Lbs.	50 Lbs.	100 Lbs.	200 Lbs.	500 Lbs.	1000 Lbs.	Ton 2000 Lbs.
WILSON'S 8-6-5 FERTILIZER. For lawns. Our own registered brand. This is a complete balanced fertilizer for lawns, grass plots, etc. It is complete in every way and will produce wonderful results. Apply 50 lbs. per 1,000 square feet	\$.45	\$.70	\$1.35	\$2.25	\$3.75	\$7.00	\$16.50	\$31.00	\$56.50
WILSON'S 5-8-5 FERTILIZER. For Gardens. Our own registered brand. A quick-acting, safe and reliable food for vegetables, fruits and flowers. Ten pounds enough for 250 square feet; 500 lbs. to the acre.45	.70	1.35	2.25	3.75	7.00	16.50	31.00	56.50
ADCO. The addition of Adco to vegetable refuse, grass, clippings, leaves, etc., two pounds to each wheelbarrow load of refuse, will produce a clean, odorless manure within three or four months. 7½ lbs. 85c.			2.00						
ALUMINUM SULPHATE. For Rhododendrons etc.....	.50	.75	1.50	2.75	5.00				
AMMONIUM SULPHATE. Makes soil acid. Increases leaf-growth. When top-dressing lawns use 1 oz. per square yard. As a liquid dissolve 1 oz. in a gallon of water.....	.45	.70	1.25	2.25	4.00				
ASHES, HARDWOOD. These furnish potash. Broadcast between rows of corn, potatoes, beets, etc., 10 lbs. per 100 running feet.40	.65	1.25	2.00	3.50				
BONE MEAL, PURE RAW HIGH GRADE. For the garden, lawns and roses. 1,500 lbs per acre or 10 lbs. to 200 square feet. Use half this quantity when top-dressing lawns.....	.40	.65	1.25	2.00	3.50	6.75	16.00	30.00	55.00
BONE MEAL, Steamed.35	.55	1.10	1.75	3.00				
BOVUNG. A product of Walker-Gordon. Natural cow manure containing not less than 75 percent organic matter, thoroughly dehydrated and well pulverized. Entirely free of dirt and live weed seeds, Bovung is in ideal condition for use upon the lawn, while experiments with it upon flowering plants have proved it superior to any other manure. Compare the price of BOVUNG with other like products25	.45	1.00	1.50	2.75		12.50	23.50	42.50
COTTON SEED MEAL. Rich in ammonia and potash, making an excellent fertilizer for lawns.....	.50	.85	1.50	2.50	4.50				
HUMUS, CERTIFIED. Aerated, sweetened and composted, making it an ideal top dressing for lawns etc. For lawns use 200 lbs. to 1,000 square feet; for vegetables and flowers, spread about one inch thick.....	.30	.50	.75	1.25	2.00	3.50	7.50	12.00	20.00
LIME, HYDRATED. Apply at the rate of 10 lbs. to 100 square feet, or 1 to 1½ tons per acre.....	.20	.35	.55	.80	1.50	2.75	6.25		
MURIATE OF POTASH. Fine for root crops.....	.60	1.00	2.60	3.00	5.50				
NITRATE OF SODA. For liquid use 1 oz. (2 heaping tea-spoons) to a gallon or 5 lbs. to 80 gallons of water. Lb. 15c.	.45	.70	1.25	2.25	4.00	7.50	18.00		
RHODONO. For Rhododendrons and other broad-leaved evergreens. Two lbs. enough for 9 square feet. Repeat after 6 months and once yearly thereafter.....	.50	.85	1.75	3.00	5.00				
SHEEP MANURE, Pulverized. (Wizard Brand). Fine for mixing with potting soil, lawns, etc.....	.35	.50	1.00	1.75	3.00	6.00	15.00	28.50	55.00

PEAT MOSS, Granulated: 6 quarts, 35 cts. . . 1 Bushel, 65 cts. . . 3 Bushels, \$1.35. . . Bale (about 22 bushels), \$3.50.

Insecticides and Fungicides

ARSENATE OF LEAD. For the control of chewing insects. 1 lb., 35 cts.; 4 lbs., \$1.25; 8 lbs., \$2.25.

BLACK LEAF 40. A concentrated nicotine solution for aphid, thrip and red spider. Also keeps dogs from shrubbery, etc. 1 oz., 35 cts.; 5 ozs., \$1.00; 1 lb., \$2.25; 2 lbs., \$3.25; 5 lbs., \$5.85; 10 lbs., \$10.00.



BORDEAUX MIXTURE. For fungus diseases. 1 lb., 40 cts.; 4 lbs., \$1.25.

BORDEAUX LEAD. A combined insecticide and fungicide. 1 lb., 45 cts.; 4 lbs. \$1.50.

CALCIUM CASEINATE POWDER. A perfect spreader and adhesive. Spreads and sticks the spray. 1 lb. tins, 30 cts. Ea.



CUPROCIDE. Red Copper Oxide. For the treatment of seed or soil to prevent "Damping Off." The effectiveness of Red Copper Oxide is attested by work conducted by many Agricultural Experiment Stations among them those of the States of N. Y., N. J., Pa., Ill., and Ohio. May also be used as a copper spray where a copper spray is indicated.

The Standard Red Copper Oxide

CUPROCIDE

4 oz. tin 35 cts.
1 lb. tin 90 cts.

DOG SCAT. In tubes wired to hang on shrubbery. Dogs and Cats hate the odor. Small tube, 15 cts.; Large tube, 30 cts.

DUTOX. For the control of Mexican bean beetle, cucumber beetle, etc. Will not burn foliage. 1 lb., 30 cts.; 6 lbs., \$1.25.

FISH OIL Soap. For scale and aphid. 1 lb., 35 cts.; 5 lbs., \$1.50.

Please Wash Me With

READE'S LIQUIFORM DOG SOAP

A liquid shampoo. Easy to use. Kills Fleas. Removes offensive odors. Beautifies the Coat. Recommended by Veterinarians.

½ Pint tin 25 cts.
1 Pint tin 40 cts.



GRAFTING WAZ. See Page 28.

HERBICIDE. See Weed Killer.

HELLEBORE POWDER. Effective against currant and cabbage worms, rose slugs, etc. 1 lb., 50c.

HORMODIN A. The new root-forming chemical. See Page 30.

LUCKY STRIKE GARDEN SPRAY. Lucky Strike is absolutely non-poisonous. Lettuce, celery, fruits and berries may be sprayed with Lucky Strike until the day they are gathered. 1 oz., 35c; ¼ pint, 75c; ½ pint, \$1.25; pint, \$2.00; quart, \$3.75.

LUCKY STRIKE DUST. A triple acting Rhotenone, Pyrethrum, Sulphur dust. A very efficient Insecticide and Fungicide. 1 lb. Shaker-top tins, Ea. 45 cts.

LUCKY STRIKE ROSE KITS. A concentrated spray for Roses, Delphiniums, Hollyhocks etc. Kills chewing and sucking insects. Also controls Mildew, Black Spot and other fungus diseases.
Kit No. 1, makes 4 gallons spray 75 cts.
Kit No. 2 makes 16 gallons spray \$2.00

LIME SULPHUR POWDER. For scale, etc. 1 lb., 35c; 5 lbs., \$1.40; 10 lbs., \$2.25; 25 lbs., \$4.50.

NAPHTHALENE FLAKES. For thrip on gladiolus bulbs. Dusted on bulbs when planting will prevent ravages of moles, etc. Lb., 25 cts.

PARA-DICHLORO-BENZINE. The best remedy for Peach tree borers. 1-lb. tin 60 cts.; 5 lbs. \$3.00.

PYROTE. A Non-poisonous double acting concentrated insect spray for flowers, vegetables and fruits. 1 oz. bottle, 35 cts.; 6 oz. bottle, \$1.00.

Grow Better ROSES



TRI-GEN

All-purpose spray

TRI-GEN. Complete protection for Roses and other plants. A fungicide insecticide and stimulant.
Small Kit (makes 4 gals. spray) ..\$1.50
Medium Kit (makes 16 gals. spray). 4.00

RED ARROW INSECT SPRAY. A contact insecticide. 1 oz., 35 cts.; ¼ pint, \$1.00; 1 pint, \$2.50; 1 quart, \$4.00.

ROOTONE. The Plant Hormone Powder. See Page 30.

SCALE DESTROYER, Target. For San Jose and other scale. 1 quart tin, 65 cts.

SCALECIDE. A complete dormant spray for fruit trees, shade trees and ornamentals. Controls scale and invigorates growth. Use 1 gal. to 15 gals. water. Qt., 65 cts.; Gal., \$1.55.

SEMESAN. The universal seed disinfectant and plant stimulant. Important for control of damping off of seedlings. Gladioli, and disinfection of seed bed soil. 2 oz., 35 cts.; 1 lb. \$2.25.



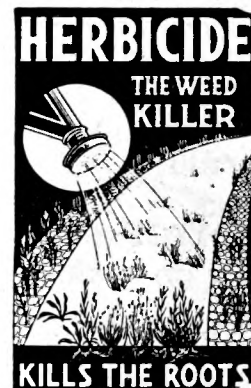
SLUG SHOT. One of the best known remedies for cabbage and currant worms. 1 lb. 25 cts.; 5 lbs., \$1.00.

SNAROL. Kills cutworms, snails, etc. A ready prepared bait not injurious to vegetation. 1½ lb. pkg., 35 cts.; 4 lb. pkg., 85 cts.

SULPHUR. Powdered. May be used wet or dry. For mildew. 1 lb., 15 cts.; 5 lbs., 50 cts.; 10 lbs., 85 cts.; 25 lbs., \$2.25; 50 lbs., \$4.00; 100 lbs., \$7.50.

TOBACCO DUST. Finely ground for dusting. 1 lb., 15 cts; 5 lbs., 65 cts; 10 lbs., \$1.00; 25 lbs., \$1.75.

TOBACCO DUST. A coarser grade for use in the soil to kill the larvae of various insects. 1 lb., 10 cts.; 5 lbs., 40 cts.; 10 lbs., 65 cts.; 25 lbs., \$1.25; 50 lbs., \$2.00; 100 lbs., \$3.50.



TREFIX. An elastic coating material. Will not injure the cut tissue of wounds or grafts. Affords permanent protection to cavities or exposed surfaces. 1 pint, 60 cts.; 1 quart, \$1.00; 1 gal., \$2.00.



TREE TANGLEFOOT
A paste preparation painted around trees to keep caterpillars off. 6 oz. tin, 35 cts.; 1 lb., 65 cts.; 5 lbs., \$3.

VOLCK, GARDEN. For the control of aphid, thrips, mealy-bug, red spider, leaf-spot, mildew, rusts, etc. 3½ oz., 35 cts.; pint, \$1.00; quart, \$1.50; gal., \$4.00.

WEED KILLER, HERBICIDE. Destroys weeds of all kinds on roadways, paths, gutters, tennis courts. One gallon makes 40 by adding water. 1 qt., 50 cts.; 1 gal., \$1.50; 5 gals., \$6.00.

WILSON'S O. K. PLANT SPRAY. A safe method of control of Thrip, Leaf Hopper, Aphid, Midge, etc. ½ pt. can, 40 cts.; 1 qt. can, \$1.00; 1 gal. can, \$3.00.



Tested Seeds

versus

Just Seeds!

•

And there's a vast difference. WILSON'S SEEDS are not only TESTED but TESTED and RETESTED hence when you purchase WILSON'S SEEDS you are doubly protected — twice insured against failure — nearly half a century of seed experience is back of the WILSON name. The best sources of supply can be known only to seedsmen who have had that experience and that is a matter of great importance. It is your only protection in buying seeds. We secure our seeds from the best domestic and foreign growers directly—not through dealers. We require that all our seeds be TESTED before we receive them but not satisfied with that we make our own tests, and we make them painstakingly and by the hundred. Be sure to specify

•

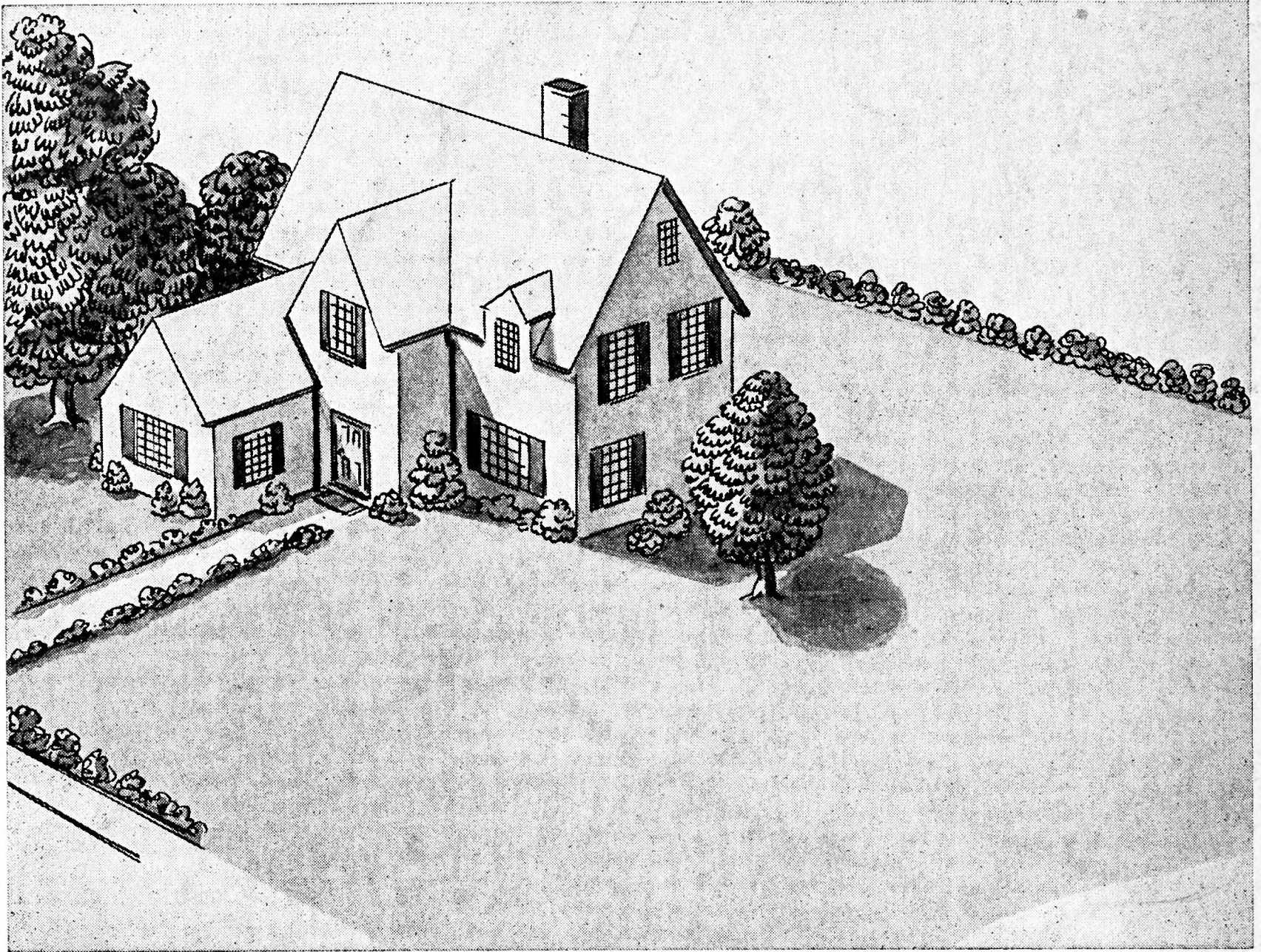
WILSON'S TESTED SEEDS
There's a Vast Difference

WILSON'S SEEDS

284 Bloomfield Ave.
Montclair, N. J.

You Get More . . .

When You Sow Wilson's Evergreen Lawn Seed!



You get more when you sow Wilson's Evergreen Lawn Seed — more lawn beauty because Wilson's Evergreen has been formulated by expert agronomists, particularly for Northern New Jersey soils. You get more durability because more perennial seed — seed that comes up year after year — is used. You get more coverage per pound because coarse grasses like Timothy are never found in any Wilson mixture. You get more fine grass plants and fewer weeds because Wilson's Evergreen is carefully tested for purity and germination before it is packed.

Pound for pound — dollar for dollar — you get more value from Wilson's Evergreen Lawn Seed. It goes further, lasts longer, stands up better. No wonder many of New Jersey's finest lawns are Wilson's Evergreen Lawns. No wonder so many experienced landscape gardeners use Wilson's Evergreen exclusively. See Pages 1 and 2.



WILSON'S EVERGREEN LAWN SEED